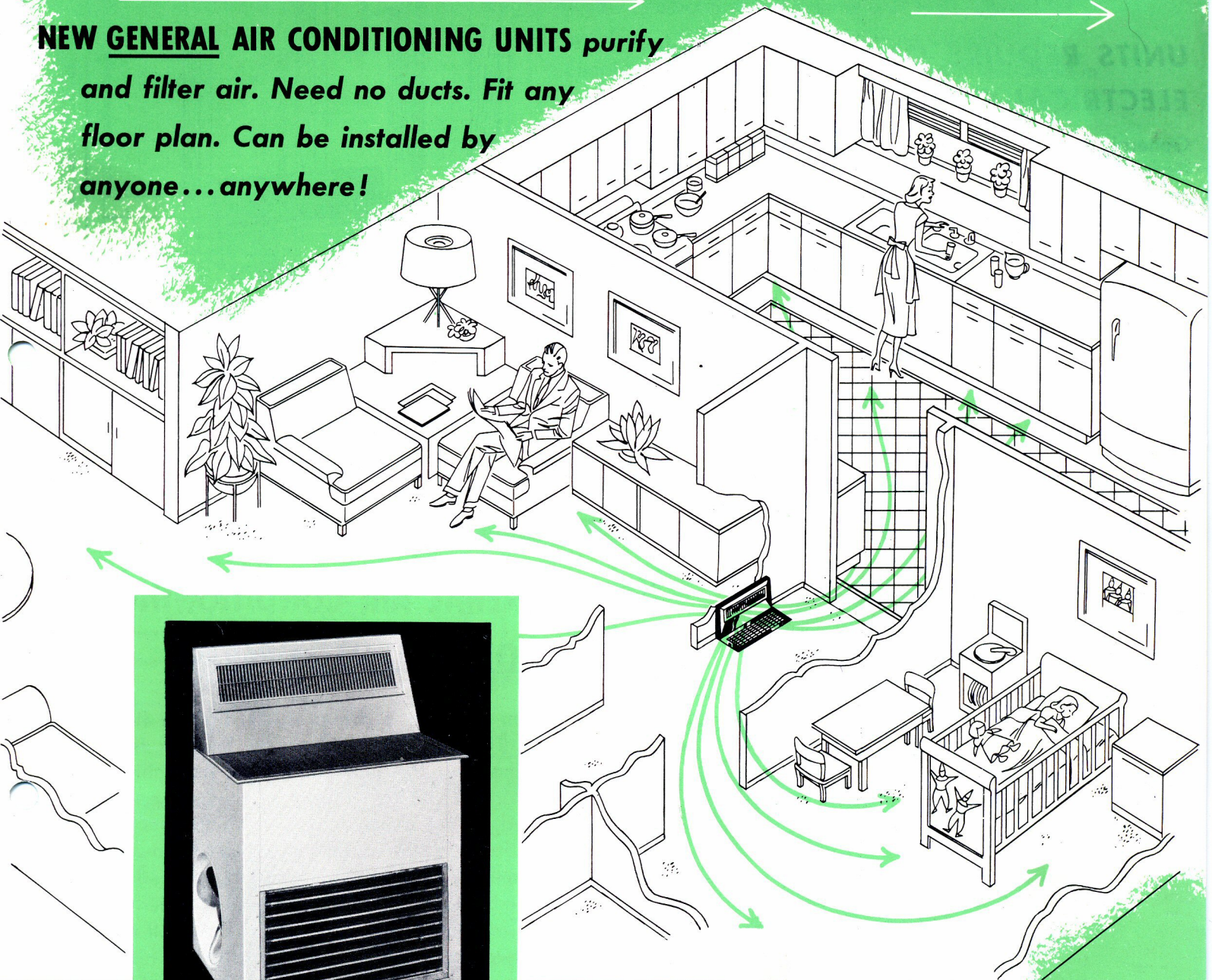


DO IT YOURSELF! COOL ENTIRE HOUSE!

NEW GENERAL AIR CONDITIONING UNITS *purify and filter air. Need no ducts. Fit any floor plan. Can be installed by anyone...anywhere!*



MANUFACTURED BY
GENERAL AIR CONDITIONING CORPORATION
MAIN OFFICE and FACTORY:
4542 E. Dunham Street
Los Angeles 23, California

- ★ EASY, QUICK "DO-IT-YOURSELF" INSTALLATION . . . NO PLUMBING!
- ★ FOUR TO SIX TIMES THE COOLING CAPACITY OF MOST WINDOW-TYPE UNITS!
- ★ LOWER INSIDE TEMPERATURE 15° TO 25° THROUGHOUT HOMES UP TO 2000 SQUARE FEET!
- ★ USE NO WATER . . . CUT DOWN HUMIDITY UP TO 35%!
- ★ THERMOSTAT CONTROL!

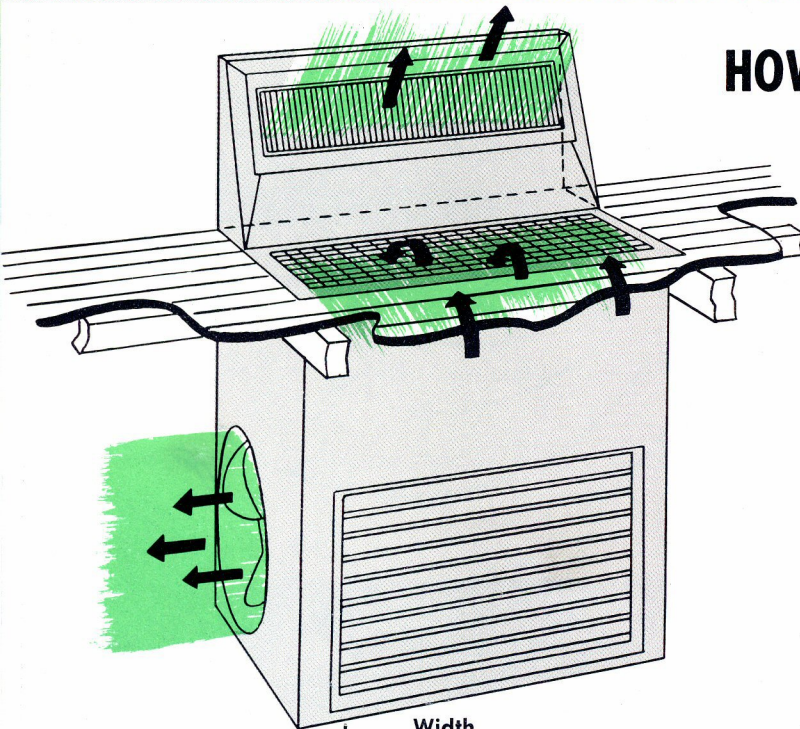
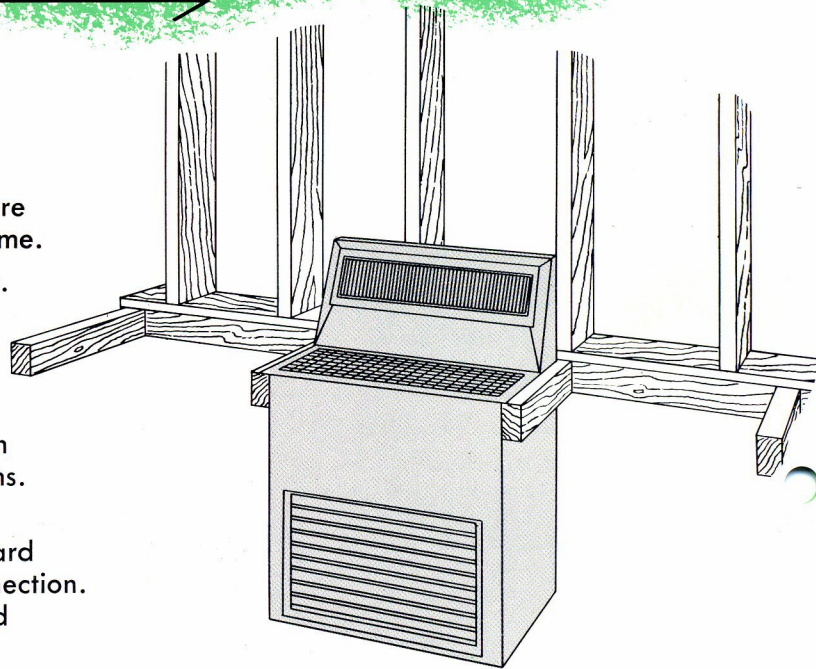
900 TO 1200 CUBIC FEET OF COOL AIR PER MINUTE!

UNITS REQUIRE ONLY STANDARD ELECTRICAL CONNECTIONS.

General Air Conditioning's new central cooling units are designed to completely cool the average American home.

Units come in two sizes: 2 h.p. and 3 h.p. The 2 h.p. compressor motor delivers 2 tons of cooling per hour — enough to cool any home up to 1500 sq. ft. to livable comfort. The 3 h.p. unit delivers 3 tons per hour for homes up to 2000 sq. ft. Units are designed for installation under floor of hall of any conventional type home. Units can also be placed in attic or closet with grill openings to rooms. If slab floor, specifications and plans can be furnished.

No plumbing, ducts or remodeling needed. Just standard 220 V., 30 Amp. (42 Amp. for 3 h.p. unit) electrical connection. Units are automatically controlled by thermostat. Sealed Tecumseh compressors carry a 5-year written guarantee.



HOW GENERAL AIR CONDITIONING COOLING UNITS OPERATE

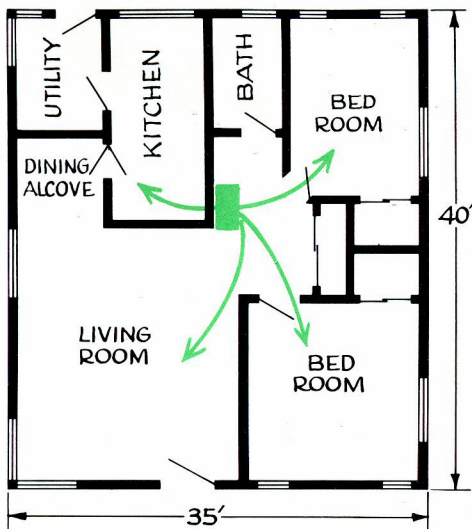
Warm room air is drawn down through floor-level grill. This hot, moist air passes through filter and cooling coil. Moisture condensed from this air by coil drains into lower part of the unit and is expelled by the exhaust blower. Condenser absorbs heat from air which is also expelled by blower. Cool, dehumidified, filtered air is then circulated through house by powerful circulating blower under top grill. Grill may have opening at back, as well as front, for two-way circulation of cool air. This grill is equipped with dampers for regulation of cool air flow. Thermostat is located for most efficient, automatic control of unit.

SPECIFICATIONS

| | | |
|---------------------------|-------|------------------------------------|
| Width | | 30" |
| Depth (Base unit) | | } 21" on 2 h.p. 24" on 3 h.p. |
| Depth (Boot above floor) | | |
| Height (Base unit) | | 22 1/2" |
| Height (Boot above floor) | | 18" |
| Net weight, pounds | | 350 |
| Cooling Power | | } 2 ton — 2 h.p. 3 ton — 3 h.p. |
| Cool Air, cu. ft./min. | | |

| | | |
|-----------------------|-------|--|
| Compressor horsepower | | 2-3 h.p. |
| Total horsepower | | } 2 3/8 — 2 h.p. 3 3/8 — 3 h.p. |
| Air Filter | | |
| Compressor | | Sealed Tecumseh unit |
| Comfort Control | | Thermostat standard |
| Refrigerant | | Freon 22 |
| Electrical | | Operates on standard 220 V., 30 Amp. system (220 V., 42 Amp. on 3 h.p. unit) |
| Warranty | | Tecumseh compressor Guaranteed 5 years, other parts 1 year |

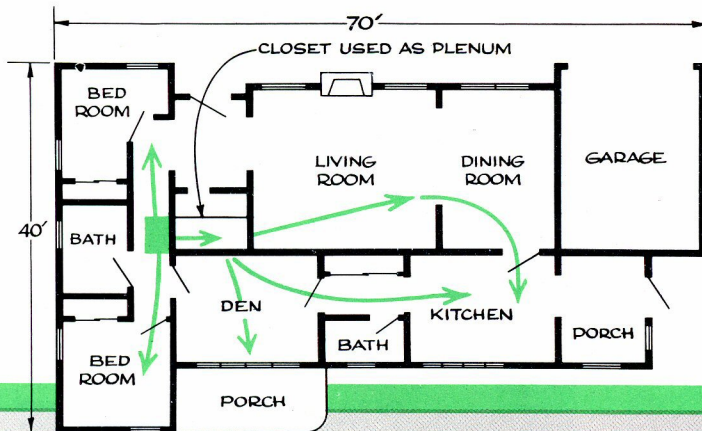
Easily installed in any home ...existing or planned



Ideal location for General Air Conditioning Cooling Unit is under floor (in crawl space) of central hall. Hall acts as duct to main rooms of home. During day, bedrooms may be shut off by damper on unit and then opened to be cooled for sleeping.

A saw and screwdriver are the only tools needed for installing a General Air Conditioning Cooling Unit. Simply cut hole in floor at desired location and head in unit between existing studs. Screw overlapping flange to floor. Arrange standard electrical connection to 220 V., 30 Amp. (42 Amp. for 3 h.p. unit) outlet and plug in. Thermostat can be placed where desired and connected to unit with ordinary bell wire. If unit is installed against inner wall, opening may be cut in back of wall and covered with grill to provide two-way circulation of cool air. If unit is installed near closet or in attic, openings may be cut to rooms and covered with grills to supply outlets for cool air. No ducts or plumbing necessary.

See floor plans on this page for suggested installation locations.



Another excellent location for unit is backed up to a centrally located closet. Here closet acts as main duct. Openings (covered with grills) can then be cut through to rooms. Damper controls flow of cool air to section of home desired.

GENERAL AIR CONDITIONING CORPORATION

MAIN OFFICE and FACTORY

4542 E. DUNHAM ST. • LOS ANGELES 23, CALIF. • Phone: ANgelus 3-4101

**NATION-WIDE
SALES AND SERVICE**

**Offices and
Warehouses:**

BOSTON: 242 Park Square Bldg.
Boston 16, Mass.

CHICAGO: Merchandise Mart
Suite 1108, Chicago 54, Ill.

CLEVELAND: 248 The Arcade
401 Euclid Avenue, Cleveland 14, Ohio

MIAMI: 2322 Biscayne Blvd.
Miami 37, Florida

TAMPA: 209 So. Franklin Street
Tampa, Florida

NEW YORK: 11 West 42nd Street
Suite 762, New York 36, N.Y.

PHILADELPHIA: 2049 Walnut Street
Philadelphia 3, Pa.

SAN FRANCISCO: 1355 Market St.
San Francisco 3, Calif.

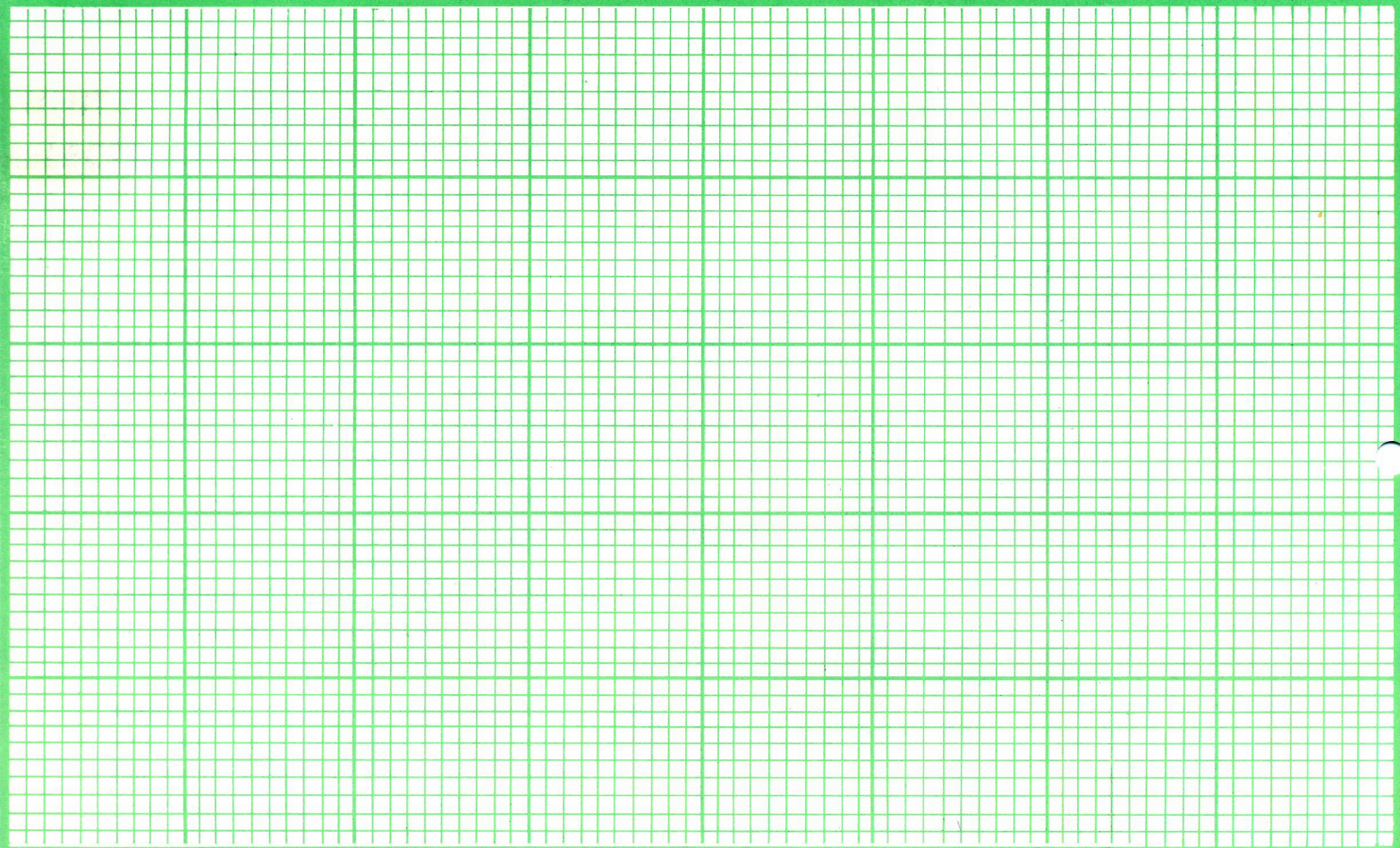
SEATTLE: 170 Denny Way
Seattle 9, Wash.

HOUSTON: P.O. Box 1664
Houston, Texas

FLOOR PLAN SKETCH

★ INDICATE NORTH BY ARROW ★ SHOW WINDOW SIZES AND LOCATION

★ SHOW ALL DIMENSIONS ★ IF TWO-STORY, SHOW BOTH FLOOR PLANS



1. Is your attic insulated? Yes____ No____
Are walls insulated? Yes____ No____
2. Do windows have outside awnings or blinds?
Yes____ No____
3. Do windows have inside shades, blinds, drapes?
Yes____ No____
4. Check type of floor:
Wood____; Concrete____; Slab____; Both____
5. Check type of heating: Floor furnace____; Steam____;
Forced air____; Other (please name)_____
6. Do you wish to cool entire house 24 hours a day?
Yes____ No____
Or do you wish to cool bedrooms only at night?
Yes____ No____
7. I am planning a new home with the following
number of rooms_____
The number of square feet will be approximately_____

**PLEASE MAIL TO NEAREST
OFFICE OF
GENERAL AIR CONDITIONING CORP.**

(See list of offices on other side of this page)

MY NAME_____

COMPANY_____

ADDRESS_____

CITY_____ **STATE**_____

TEAR OFF PAGE HERE