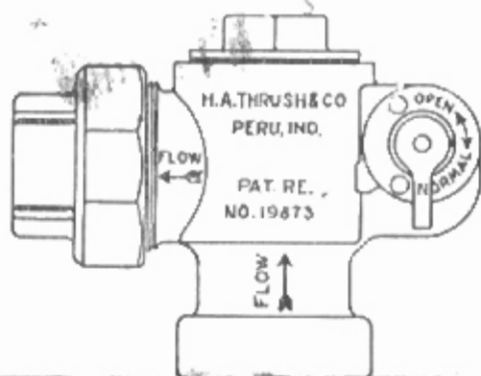


INSTRUCTIONS FOR INSTALLING

Thrush Flow Control Valve

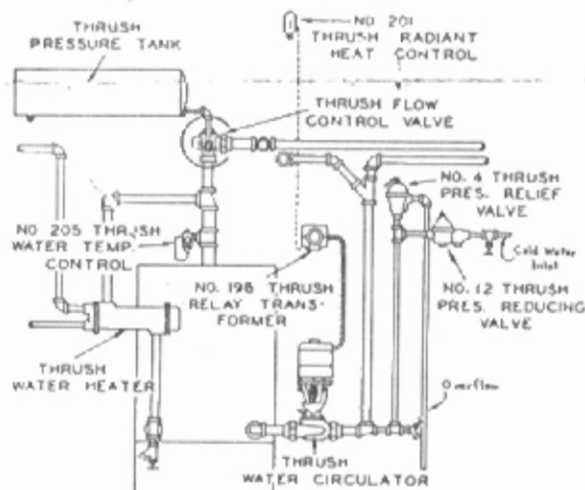


The Thrush Flow Control Valve is designed to control circulation when used in conjunction with the Thrush Water Circulator on automatically fired hot water heating systems. Illustration at the left shows the adjusting lever. When the valve is shipped from the factory, this lever is in Normal position, which is the correct operating position. When the system is to be completely drained, the lever should be raised to the Open position. When the system has been refilled, be sure the lever is returned to Normal position. In case of a power failure which would prevent operation of the Circulator, or for any other reason, gravity circulation can be secured in up-feed systems by moving the lever to the Open position. The lever must be returned to Normal position for automatic operation.

Angle type Thrush Flow Control Valve is easy to install and takes the place of an elbow or tee at the top of the flow riser. No's. 114-1", 114A-1 1/4", 115-1 1/2", and 120-2" are supplied with female threaded inlet connection and lip union outlet connection as shown at top of page. The No's. 125-2 1/2" and 130-3" sizes are flanged.

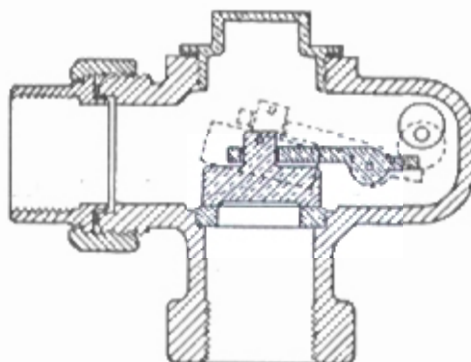
THRUSH FLOW CONTROL SYSTEM

Illustration below shows the proper installation of Thrush Flow Control Valve on an up-feed hot water heating plant. It also shows a complete forced circulating Thrush Flow Control System for automatically fired hot water which provides the most economical heating with year around domestic water supply from the same boiler.



COMPLETE THRUSH FLOW CONTROL
HOT WATER HEATING

HOW IT WORKS



Cut-away view above shows disc of the Flow Control Valve in the closed position. This is the Normal position of the disc when the Thrush Water Circulator is not operating. When the Circulator is operating, the disc rises as shown by dotted lines, allowing water in the boiler to circulate through the valve to the radiators. These dotted lines also show the position of the disc when the adjusting lever is moved to the Open position. The dotted circle at right shows the eccentric cam which holds the disc open when lever is turned.

All Thrush Flow Control Valves have a 1/2" side tapping, below the seat, for connection to the Thrush Pressure Tank. This exclusive patented feature assures proper venting of air and gases from the boiler water and also permits expansion and contraction of boiler water without forcing the disc of the Flow Control Valve open. To be used with Thrush Water Circulator as shown in system drawing above.

H. A. THRUSH & COMPANY • PERU, INDIANA

PRINTED IN U.S.A.