

ALPHABETICAL INDEX

	Page No.		Page No.		Page No.
A Accessories, Baseboard Heating	17, 21	Fuel Cut-offs	28	Radiators, Arco	16
Heating	24, 28	Gauges	10	Peerless Wall	16
Oil Tank	10	Storage Tanks	10	Sunrad	16
Radiator	16, 24, 25			Reducing Valves	27, 28
Adapters, Air Valve	24			Refractory Combustion Chambers	5, 7
Altitude Gauges	14, 26	G Gas Boilers	1, 2, 15	Relief Valves	26, 28
American Blower Unit Heaters	25	Conversion Burners	3	Remotaire Room Conditioners	29, 32
Angle Valves, Circulator	24	Gauges, Altitude	14, 26		
Radiator	24, 25	Combination	14, 26		
Arco Connectors	20	Oil Tank	10	S Safety Feeders	28
Radiators	16	Pressure	14	Valves, Pop	14
Arcoflame Control Sets	4-6, 9	Steam	14	Specialties, Heating	24, 28
Oil Burners	9	Vacuum	14	Stoniflame Gas Conversion Burner	3
		Water	14, 26	Steam Boilers	1, 5, 9, 11-13, 15
				Gauges	14
B Balancing Fittings	24			Radiators	16
Baseboard Heating	17, 21	H Hand Fired Boilers	13	Traps	26
Accessories	17, 21	Heaters, Hot Water	35	Unit Heaters	35
Basement Oil Tanks	10	Steam	35	Steel Boilers	15
Boiler Burner Units	3-6, 15	Unit	35	Stoker Fired Boilers	11, 12, 15
Controls	27, 28	Heating Accessories	24, 28	Storage Tanks, Oil	10
Feeders	28	Controls	10	Strainers, Radiator	26
Thermometers	26	Units, Oil	3-6	Sunrad Radiators	16
Boilers, Gas Fired	11, 2, 15	Heatrim Panels	21	Switches, Low Water Cut-off	28
Hand Fired	13	Hot Water Air Valves	24, 25		
Oil Fired	3, 9, 15	Radiator Valves	24, 25		
Steam	1, 5, 9, 11-13, 15	Thermometers	26		
Steel	15	Vent Valves	24, 25		
Stoker Fired	11, 12, 15			T Tank Gauges	10
Water	20, 11-13, 15	K Kewanee Boilers	15	Tanks, Compression	27
Booster Pumps	27			Oil Storage	10
Brackets, Radiator	16	L Low Water Cut-offs	28	Temperature Controls	10
Bulk-in Water Heaters	4, 14	Cut-off Combinations	28	Temtrim Radiation	22, 23
Burners, Gas Conversion	3	Cut-off Switches	28	Thermometers	26
Oil	9			Thermostatic Traps	26
Bushings, Radiator	16			Thermostats	10
		M Magnetic Type Float Gauge	10	Traps, Float and Thermostatic	26
		Mixing Valves, Water	14	Radiator	26
		Manofo Fittings	28	Steam	26
		Multifin Connectors	18, 19	Thermostatic	26
C Chambers, Combustion	5, 7	O Oil Burners	9	U Underground Oil Tanks	10
Chillers, Packaged Water	33, 34	Fired Boilers	3, 9, 15	Union Elbows	24
Circulator Pumps	27	Fired Heating Units	3-6	Unit Heaters	35
Valves	24	Storage Tanks	10	Units, Boiler-Burner	3-6, 15
Combination Gauges	14	Tank Gauges	10	Dual Controls	28
Combinations, Feeder Cut-off	28			Oil Heating	3-6
Combination Valves	28	P Packaged Boilers	3, 15	Packaged Boiler	3, 15
Combustion Chambers	5, 7	Oil Heating Units	3		
Compression Tanks	27	Water Chillers	33, 34	V Vacuum Gauges	14
Condensation Pumps	25	Panel Heating	17, 21	Pumps	25
Conditioners, Room	29, 32	Peerless Wall Radiators	16	Valves	24, 25
Controls, Heating	10	Plugs, Radiator	16	Valves, Air	24, 25
Water	27, 28	Pop Safety Valves	14	Circulator	24
Connectors	18-20	Pressure Gauges	14	Combination	28
Conversion Burners, Gas	3	Reducing Valves	27, 28	Dual Unit	28
Oil	9	Relief Valves	27, 28	Flo-Control	27
Cut-off Combinations	28	Pump Controls	28	Pop Safety	14
		Pumps, Booster	27	Radiator	24, 25
		Circulator	27	Reducing	27, 28
		Condensation	25	Relief	27, 28
		Vacuum	25	Vacuum	24, 25
				Vent	24, 25
				Venturafin Unit Heaters	35
D Detroit Controls	10				
Adapters	24	R Radiantrim Panels	17	W Wall Radiators	16
Air Valves	24	Radiator Accessories	16	Water Boilers	2, 9, 11-13, 15
Circulator Valves	24	Brackets	16	Chillers	33, 34
Radiator Valves	24	Connectors	18-20	Circulators	27
Dual Unit Valves	28	Elbows	24	Controls	28
		Enclosures	18-20, 22, 23	Feeders	28
		Endsures	18-20, 22, 23	Gauges	14, 26
		Traps	26	Mixing Valves	14
		Valves	24, 25	Radiators	16
E Elbows, Balancing	24				
Radiator	24				
Electric Water Feeders	28				
Enclosures, Radiator	18-20, 22, 23				
F Feeder Cut-off Combinations	28				
Feeders, Water	28				
Fittings, Balancing	24				
Manofo	28				
Float and Thermostatic Traps	26				
Flo-Control Valves	27				

R977E
10

NOTICE

All prices in this book are subject to a discount of

50%

The following profit schedule is furnished for your convenience in arriving at selling prices.

40%	—discount from list prices in book yields you—20%	on your cost
37½%	—discount from list prices in book yields you—25%	on your cost
33½%	—discount from list prices in book yields you—33½%	on your cost
30%	—discount from list prices in book yields you—40%	on your cost
25%	—discount from list prices in book yields you—50%	on your cost
20%	—discount from list prices in book yields you—60%	on your cost
15%	—discount from list prices in book yields you—70%	on your cost

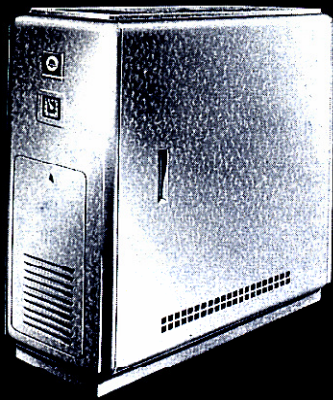
NEW IN THIS ISSUE

	Page No.
Arcoleader Packaged Oil Heating Units.....	3
Arcoleader Oil Heating Units.....	4
Self-contained and Residential Remotaire Room Conditioners.....	31
Residential Remotaire Room Conditioners.....	32

Remove this sheet from book and retain for your record.



Model O-GS-E—Steam— for manufactured, natural, LP and mixed gases



Model O-GS-E

boiler number	*AGA ratings		net I-B-R rating sq ft	price each
	input MBH	output MBH		
O-GS-4-E	76.5	61.2	165	\$594.00
O-GS-5-E	102.0	81.6	220	636.00
O-GS-6-E	127.5	102.0	275	708.00

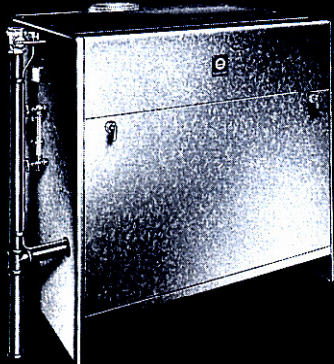
*For butane gas, reduce ratings by 22 per cent.

Regular equipment includes: Detroit V-575-S automatic gas valve with mechanical limit control, manual opening feature, Baso automatic pilot valve (arranged for 100% safety shut-off for LP gas and LP air gas, 525-1400 Btu), resetting low water cut-off, manual shut-off valve, pilot filter and gas pressure regulator (except for LP gas), steam gauge, safety valve, boiler drain and pilot cocks, insulated jacket, draft hood.

Optional equipment: runner type pilot igniter (except for LP-air gas) when desired, specify and add \$12.00 to price of boiler.

G-4 and G-6 Series—Steam

Jacketed—for manufactured, natural, LP and mixed gases



Model G-4 Steam

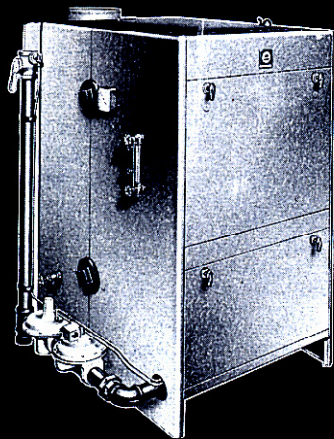
G-44	180	144	395	\$ 832.00
G-45	240	192	530	986.00
G-46	300	240	670	1140.00
G-47	360	288	810	1306.00
G-48	420	336	955	1450.00
G-49	480	384	1100	1592.00
G-410	540	432	1240	1734.00
G-411	600	480	1390	1876.00
G-66	650	520	1520	1918.00
G-67	780	624	1840	2136.00
G-68	910	728	2170	2376.00
G-69	1040	832	2510	2788.00
G-610	1170	936	2850	3014.00
G-611	1300	1040	3200	3322.00
G-613	1560	1248	3900	3872.00
G-615	1820	1456	4620	4478.00
G-617	2080	1664	5340	4934.00
G-619	2340	1872	6040	5550.00
G-621	2600	2080	6720	5956.00
G-622	2730	2184	7060	6356.00
G-625	3120	2496	8080	7142.00
G-628	3510	2808	9080	7944.00
G-631	3900	3120	10100	8826.00
G-633	4160	3328	10750	9424.00
G-637	4680	3744	12100	10644.00
G-641	5200	4160	13450	11878.00

Regular equipment includes: Detroit V-530 diaphragm gas valve, manual opening and recycling features, Baso automatic pilot switch (arranged with Detroit V-581 pilot valves for 100% safety shut-off for LP-air and LP gases; optional with other gases), Detroit 450-BA-1 boiler pressure limit control, resetting low water cut-off manual shut-off valve, pilot filter and gas pressure regulator (except for LP gas), steam gauge, safety valve, boiler drains and pilot cocks, insulated jacket.

Optional equipment: models G-4 and G-66 to G-611 available with push button electric ignition for use with mfd., nat. and mixed gas non-100% shut-off; when desired, specify and add \$39.20 to price of boiler.

Notes: Room thermostats not included in above prices—see page 10.

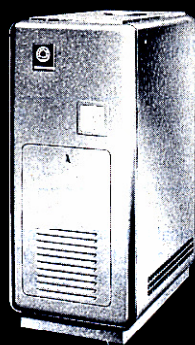
Ratings above for installations at sea level and at elevations up to 2000 feet. For ratings over 2000 feet, consult your nearest Amstan branch.



Model G-6 Steam



Model GA-E—Water—for manufactured, natural, LP and mixed gases



Model 2 -GA-E

boiler number	AGA ratings		net I-B-R rating sq ft	price each
	input MBH	output MBH		
1-GA-4-E	39.4	31.5	160	\$401.20
1-GA-5-E	52.5	42.0	215	423.20
1-GA-6-E	65.6	52.5	260	445.20
†2-GA-4-E	78.8	63.0	320	487.20
†2-GA-5-E	105.0	84.0	420	549.20
†2-GA-6-E	131.3	105.0	525	621.20
†2-GA-7-E	157.5	126.0	635	679.20
4-GA-8-E	183.8	147.0	740	743.20
4-GA-9-E	210.0	168.0	840	805.20
4-GA-11-E	262.5	210.0	1055	925.20

†For LP gas on 2 GA series only, AGA ratings are reduced approximately 5%.

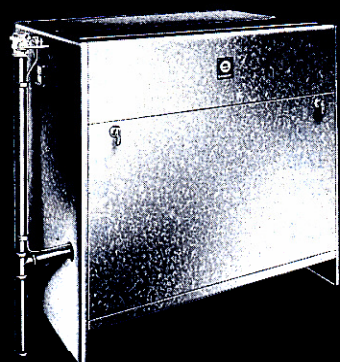
Regular equipment includes: Detroit V-575-FW automatic gas valve with mechanical limit control, manual opening feature, Baso automatic pilot valve (arranged for 100% safety shut-off for LP gas and LP-air gas, 525-1400 Btu), manual shut-off valve, pilot filter and gas pressure regulator (except for LP gas), theraltimeter, boiler drain and pilot cocks, insulated jacket, draft hood, relief valve.

ASME relief valve—if water boiler is desired less ASME code relief valve, specify and deduct for omission from prices above the amount shown on page 26.

Optional equipment: runner type pilot igniter for use with listed gases, specify and add \$12.00 to price of boiler.

Available with push button electric ignition for use with manufactured, natural and mixed gas; when desired, specify and add \$39.20 to price of boiler.

Detroit V-575-FW gas valves available with special low range mechanical limit control and will be furnished if specified at no additional charge. Range 125-155°.



Model G-4 Water

G-4 and G-6 Series—Water

Jacketed—for manufactured, natural, LP and mixed gases

G-44	180	144	725	\$ 765.20
G-45	240	192	960	919.20
G-46	300	240	1200	1073.20
G-47	360	288	1440	1239.20
G-48	420	336	1685	1384.90
G-49	480	384	1925	1526.90
G-410	540	432	2160	1668.90
G-411	600	480	2400	1810.90
G-66	650	520	2615	1846.80
G-67	780	624	3120	2064.80
G-68	910	728	3635	2303.70
G-69	1040	832	4155	2715.70
G-610	1170	936	4675	2951.50
G-611	1300	1040	5205	3259.50
G-613	1560	1248	6240	3809.50
G-615	1820	1456	7395	4426.40
G-617	2080	1664	8545	4882.40
G-619	2340	1872	9665	5498.40
G-621	2600	2080	10755	5907.20
G-622	2730	2184	11295	6307.20
G-625	3120	2496	12925	7093.20
G-628	3510	2808	14525	7895.20
G-631	3900	3120	16160	8777.20
G-633	4160	3328	17200	9351.20
G-637	4680	3744	19360	10571.20
G-641	5200	4160	21520	11818.00

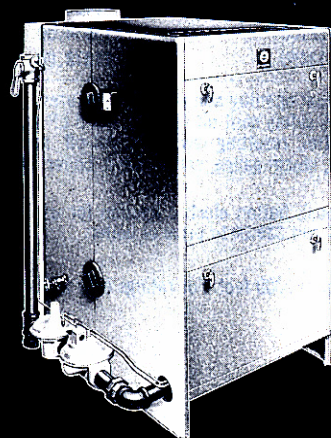
Regular equipment includes: Detroit V-530 diaphragm gas valve, manual opening and recycling features, Baso automatic pilot switch (arranged with Detroit V-581 pilot valves for 100% safety shut-off for LP air and LP gases; optional with other gases), Detroit CA-655 immersion control, manual shut-off valve, pilot filter and gas pressure regulator (except for LP gas), theraltimeter, boiler drains and pilot cocks, insulated jacket, relief valve.

ASME relief valve—if water boiler is desired less ASME code relief valve, specify and deduct for omission from prices above the amount shown on page 26.

Optional equipment: models G-4 and G-66 to G-611 available with push button electric ignition for use with mfd., nat. and mixed gas non-100% shut-off; when desired, specify and add \$39.20 to price of boiler.

Notes: Room thermostats not included in above prices—see page 10.

Ratings above for installations at sea level and at elevations up to 2000 feet. For ratings over 2000 feet, consult your nearest Amstan branch.



Model G-6 Water

New Stanflame—gas fired

For manufactured, natural, LP gas, LP-air gas and mixed gases—factory assembled

model number	inputs	AGA ratings—Btu input per hour			price each	
		mfd., nat. and mixed gas	LP gas	LP-air gas 525-1400 Btu	nat., mixed and LP gas	mfd. and LP-air gas
GC-1	Max.	200,000	200,000	175,000	\$157.90	\$165.90
	Min.	60,000	60,000	60,000		
GC-1-A	Max.	200,000	200,000	175,000	163.20	171.20
	Min.	60,000	60,000	60,000		
GC-2	Max.	325,000	325,000	225,000	168.50	178.50
	Min.	125,000	60,000	125,000		

Regular equipment includes:

American-Standard CA-412 timed cycling thermostat
 Detroit V-579-M bi-flex automatic gas valve and transformer, manual opening feature
 Pilot filter; gas pressure regulator (except for LP gas)
 Runner pilot ignition
 Manual shut-off valve
 Stainless steel flame spreader

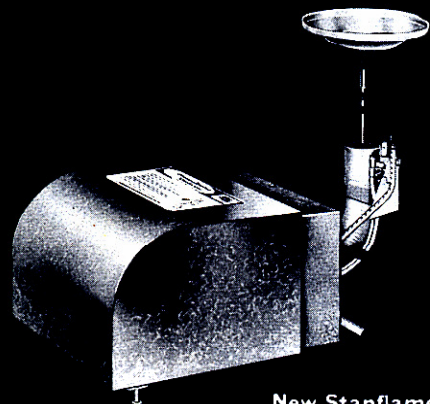
Baso automatic pilot switch (for mfd., nat. and mixed gas)
 Baso automatic valve (for LP gas and LP-air gas only)
 Upshot type main burner
 Mixer tube
 Control housing with adjustable supports
 Sheet metal front plate (ashpit seal)

Note: New Stanflame gas conversion burner furnished with adjustable orifice installed with models GC-1 and GC-1-A for manufactured, natural and mixed gas and with model GC-2 for natural and mixed gas; extra fixed orifice also supplied. Fixed orifice only furnished with model GC-2 for manufactured gas, and with all models for LP gas and LP-air gas.

Natural gas models with 100% safety shut-off, price on application.

Push button electric ignition, price on application.

For optional Detroit limit controls, see page 10.



New Stanflame

packaged oil heating units



Arcoleader Wet Base—Water

Flush jacket—designed and equipped with controls for forced circulation—factory assembled and crated

unit number	gross I-B-R output MBH	I-B-R burner capacity GPH	tankless heater number	▲ I-W-H rating	net I-B-R rating		price each with regular equipment
					MBH	sq ft	
Less tankless heater							
A1-3-P	100	0.95	75	500	\$806.00
A1-4-P	136	1.30	102	680	900.00
With factory installed tankless heater							
A1-3-P	100	0.95	732	3/4	75	500	860.00
A1-4-P	136	1.30	732	4/4	102	680	956.00

*Nozzle sizes, gals. per hour, furnished with Arcoleader packaged oil heating units are as follows: A1-3-P, 1.00; A1-4-P, 1.35.

▲ Gallons of water per minute heated from 40 F to 140 F with 200 F boiler water temperature.

Regular equipment includes:

Model PH-5 Arcoflame oil burner with hanger mounting for front firing
 Detroit CA-701 stack control factory installed
 Draft stabilizer
 Heat Lib-O-Rator high temperature steel combustion chamber
 Flush jacket
 1 1/4" circulator with piping
 Wiring harness
 Junction box with switch.
 Drain valve

Units with factory installed tankless heater:

Built-in tankless heater no. 732
 No. 16 Arcoflame control set (American-Standard CA-412 thermostat, Detroit CA-655 immersion limit control, CA-666-DT double throw immersion control, CA-295 relay transformer) and nozzle

Units less tankless heater:

No. 23 Arcoflame control set (American-Standard CA-412 thermostat, Detroit CA-655 immersion limit control, CA-666-R reverse acting low limit control) and nozzle

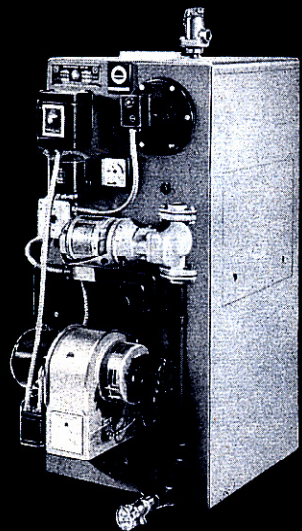
Heater opening cover plate

Note: Units shipped with flush jacket, all electrical controls (except thermostat), circulator and piping, factory installed and wired. PH-5 Arcoflame oil burner, draft stabilizer, relief valve, and CA-412 thermostat shipped separately

Optional equipment:

Jacket extension; if desired specify and add **\$52.70** to price above

Two-stage fuel unit will be furnished when specified at **\$10.00** extra

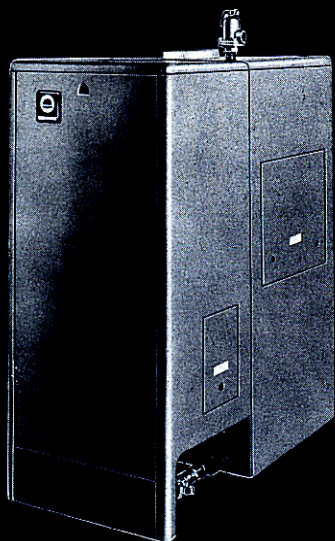


Arcoleader Wet Base for water only



Arcoleader Wet Base—Water

Flush jacket—designed and equipped with controls for forced circulation



Arcoleader Wet Base

unit number	gross I-B-R output MBH	* I-B-R burner capacity GPH	tankless heater number	▲ I-W-H rating	net I-B-R rating		price each with regular equipment
					MBH	sq ft	

Less factory installed tankless heater

A1-3-B	100	0.95	75	500	\$ 645.50
A1-4-B	136	1.30	102	680	764.50
A1-5-B	173	1.65	130	865	899.50

With factory installed tankless heater

A1-3-B	100	0.95	732	3¾	75	500	\$ 721.40
A1-4-B	136	1.30	732	4¾	102	680	840.40
A1-5-B	173	1.65	743	5½	130	865	1015.10

*Nozzle sizes, gals. per hour, furnished with Arcoleader oil heating units are as follows: A1-3-B, 1.00; A1-4-B, 1.35; A1-5-B, 1.65.

▲ Gallons of water per minute heated from 40 F to 140 F with 200 F boiler water temperature.

Regular equipment includes:

Model PH-5 Arcoflame oil burner with hanger mounting for front firing
 Detroit CA-701 stack control
 Draft stabilizer
 ASME relief valve—if unit is desired less ASME Code relief valve specify and deduct for omission from price above the amount shown on page 26
 Heat Lib-O-Rator high temperature steel combustion chamber
 Flush jacket

Units specified with factory installed tankless heater:

Unit numbers A1-3-B and A1-4-B: Built-in tankless heater no. 732. Unit number A1-5-B: Built-in tankless heater no. 743

Note: Tankless heaters installed at factory in section assembly

No. 16 Arcoflame control set (American-Standard CA-412 thermostat, Detroit CA-655 immersion limit control, CA-666-DT double throw immersion control, CA-295 relay transformer) and nozzle

Units specified less factory installed tankless heater:

No. 23 Arcoflame control set (American-Standard CA-412 thermostat, Detroit CA-655 immersion limit control, CA-666-R reverse acting low limit control) and nozzle

Heater opening cover plate

Optional equipment:

Jacket extension; if desired specify and add \$52.70 to price above

Built-in tankless heaters can be ordered for separate shipment with units less factory installed tankless heaters. For prices and detailed information of I-W-H ratings for Built-in tankless heaters see below.

Arcoflame control sets for units specified less tankless heater: control sets other than no. 23 Arcoflame control set included in price above will be furnished when specified at following added charges:

Water control set no. 26 \$ 1.20

Water control set no. 16-Z 57.60

Two-stage fuel unit will be furnished when specified at \$10.00 extra

Built-In Tankless Heaters—tested with Arcoleader units

heater number	▲ I-W-H rating	boiler number tested	I-B-R burner capacity GPH	price each
723	3¾	A1-3-P or A1-3-B	0.95	\$44.50
723	3¾	A1-4-P or A1-4-B	1.30	44.50
723	3¾	A1-5-B	1.65	44.50
732	3¾	A1-3-P or A1-3-B	0.95	54.20
732	4¾	A1-4-P or A1-4-B	1.30	54.20
732	4¾	A1-5-B	1.65	54.20
743	5½	A1-5-B	1.65	95.40

▲ Gallons of water per minute heated from 40 F to 140 F with 200 F boiler water temperature.



Oakmont—flush jacket—for steam or water

Arranged for but less built-in tank or tankless type water heater

* unit number	net I-B-R rating sq ft	† price each	steam and water		* unit number	net I-B-R rating sq ft	† price each
			gross I-B-R output MBH	including burner model			
	steam					water	
**S-84-OB	390	\$ 873.50	143	AH-6	**W-84-OB	715	\$ 873.50
S-85-OB	480	972.60	175	AH-6	W-85-OB	875	972.60
S-86-OB	560	1053.90	202	AH-6	W-86-OB	1010	1053.90
S-87-OB	640	1158.90	230	EH-6	W-87-OB	1150	1158.90
S-88-OB	730	1260.90	261	EH-6	W-88-OB	1305	1260.90
S-89-OB	810	1342.90	288	EH-6	W-89-OB	1440	1342.90

Note: Cover plate for water heater opening will be furnished if specified on order at added charge of \$7.60.

Above prices include Arcoflame burner model shown above, with hanger mounting for rear firing.

**If model ES-2-6 shell head Arcoflame oil burner is desired, specify and add \$42.10 to prices above.

Exbrook—flush jacket—for steam or water

Not adapted for built-in water heater

number including model LF-E burner	net I-B-R rating sq ft	† price each	steam and water		number including model LF-E burner	net I-B-R rating sq ft	† price each
			gross I-B-R output MBH				
	steam					water	
S-207-OB	775	\$1498.60	276		W-207-OB	1380	\$1498.60
S-208-OB	950	1620.30	335		W-208-OB	1675	1620.30
S-209-OB	1130	1738.30	395		W-209-OB	1975	1738.30
S-210-OB	1300	1856.90	451		W-210-OB	2255	1856.90
S-211-OB	1480	1982.90	508		W-211-OB	2540	1982.90
S-212-OB	1650	2117.60	563		W-212-OB	2815	2117.60
S-213-OB	1830	2237.60	620		W-213-OB	3100	2237.60

*Arranged for but less built-in tank or tankless type water heater

S-207-OB-T	775	1510.60	276		W-207-OB-T	1380	1510.60
S-208-OB-T	950	1632.30	335		W-208-OB-T	1675	1632.30
S-209-OB-T	1130	1750.30	395		W-209-OB-T	1975	1750.30
S-210-OB-T	1300	1868.90	451		W-210-OB-T	2255	1868.90
S-211-OB-T	1480	1994.90	508		W-211-OB-T	2540	1994.90
S-212-OB-T	1650	2129.60	563		W-212-OB-T	2815	2129.60
S-213-OB-T	1830	2249.60	620		W-213-OB-T	3100	2249.60

*Built-in water heaters are available for use with "T" type units only.

Note: Cover plate for water heater opening furnished if specified for "T" type unit at added charge of \$6.90.

Following applies to Oakmont, Exbrook and Severn units—prices include:

All units—Exbrook and Severn oil boilers with flush jacket only. Oakmont oil boiler with flush jacket, for jacket extension on Oakmont, add \$63.40 to prices above.

Two-stage fuel unit will be furnished for Oakmont and Severn units when specified on order at \$10.00 extra.

See page 9 for optional solenoid cut-off valve for use with Arcoflame oil burners.

Detroit CA-701 stack control. Draft stabilizer.

ASME relief valve—if water boiler is desired less ASME code relief valve, specify and deduct for omission from prices above the amount shown on page 26.

†Includes Heat Lib-O-Rator molded refractory combustion chamber, model number shown below.

Steam only—no. 11 Arcoflame control set and nozzle. **Water only**—no. 13 Arcoflame control set and nozzle. **Vapor installations**—when oil heating units are to be used on a vapor system, see page 9 for price addition, to the equivalent steam boiler size required, for substitution of Detroit 450-BC-1 vapor limit control for 450-BA-1 pressure limit control.

See page 14 for prices and ratings of built-in water heaters and low water cut-off available for use with Oakmont, Exbrook and Severn units.

Optional Arcoflame Control Sets

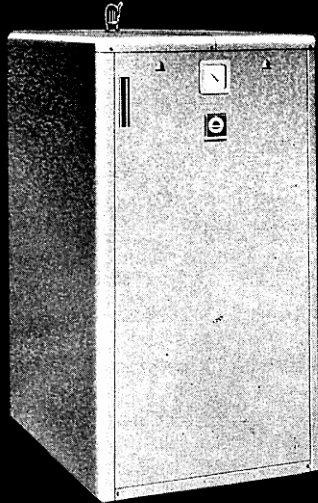
When Arcoflame control sets other than those included in prices shown are desired for Oakmont, Exbrook and Severn units, the following added charges will be made:

Steam control set no. 12 . . . \$19.10	Water control set no. 15 . . . \$42.80	Water control set no. 26 . . . \$ 46.50
Water control set no. 23 . . . 19.80	Water control set no. 16 . . . 45.30	Water control set no. 16-Z . 102.90

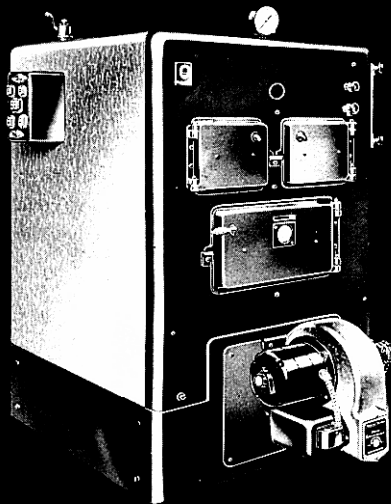
Heat Lib-O-Rator Molded Refractory Combustion Chambers

Included in prices for Oakmont, Exbrook and Severn units shown. If not desired, following deductions from those prices may be made:

unit number	Heat Lib-O-Rator included	maximum firing rate GPH	deduct for omission	unit number	Heat Lib-O-Rator included	maximum firing rate GPH	deduct for omission
84	No. 00	1.50	\$34.00	207 thru 209	No. 7	4.50	\$69.40
85	No. 1	1.75	37.10	210 thru 213	No. 8	6.50	74.00
86	No. 2	2.25	40.40				
87 thru 89	No. 3	3.00	45.40	17, 21	No. 1	1.75	37.10
				25, 29	No. 2	2.25	40.40
				33, 37	No. 3	3.00	45.40



Oakmont



Exbrook