

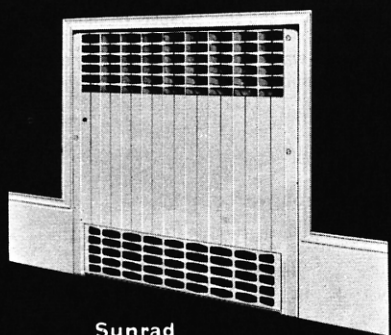
Arco 6, 5, 4, 3 Tube

Arco Radiators

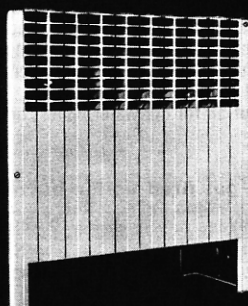
Cast iron—sold only in even number of sections to maximum of 56 sections

height inches	width, no. of tubes	sq ft per section				price per sq ft
		3 tube	4 tube	5 tube	6 tube	
32	6	3.7	\$2.04
25	3,4,5,6	1.6	2.0	2.4	3.0	2.06
22	4,5	...	1.8	2.1	...	2.14
19	4,6	...	1.6	...	2.3	2.18

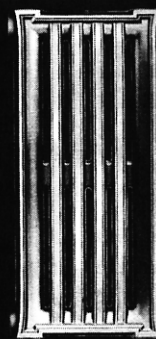
Brackets with wall plate for 3, 4, 5, 6 tube	each	\$1.46
Pedestals, Arco—single type, 1/2 and 1"	each	.56
1 1/2"	each	.70



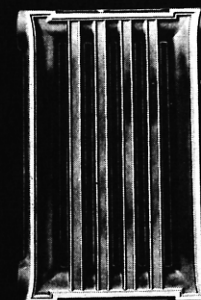
Sunrad (recessed)



Sunrad (free standing)



Type 11-B



Type 8-B

Sunrad Radiators

Cast iron—recessed and free standing models

type	sq ft per section	price per sq ft
M 5 x 20	2.25	\$2.60
M 7 1/2 x 23	3.40	2.74

Brackets, for legless type	each	\$1.14
Grille-inlet, stamped lattice type	per section	.34

Regularly furnished with 2 3/4" legs but can be supplied on special order without legs, at no extra charge. No other special legs can be supplied.

Sunrad radiators sold in even number of sections from 4 to 30 sections, and in odd number of sections with center leg from 31 to a maximum of 45 sections.

Increase size 5% for recessed installation—3/4" air space top and sides, 1/2" at back. Increase size 15% if radiator will have no clearance top or sides, 1/2" air space at back.

Other radiator accessories

	price each
Plugs or bushings, 3/4 to 1 1/2"	\$.44
Slip nipples, 3/4 to 1 1/4"	.44
Hexagon nipples, 1 1/2"	.70

Peerless Wall Radiators

Cast iron—for use singly or in assembled sections

type	sq ft per section	price per sq ft
11-B	11	\$2.34
8-B	8	2.46

Extra charge of \$1.10 each will be made for tappings of nos. 20, 50, 60 and 90 as shown on outline drawings in current literature.

For convenience in handling and shipping, radiators will be assembled in lengths not exceeding 4 sections.

Wall and ceiling brackets

	price each
Adjustable, with bearing plate, single spool	\$ 7.04
double spool	12.82
Type L, concealed bottom support	.44
Type M, top guide	.30
Type MM, concealed top guide	.44
Type P, ceiling bracket	.88

	price each
Air vent plugs, 1/8"	\$.02
Radiator rods	per section .02
Radiator rod nuts	.02

Model No. 8 Radiantrim

Cast iron baseboard panels

square feet per lineal foot	price per foot	
	lineal	square
2.56	\$5.28	\$2.06

Panel lengths (3 to 30 ft.) made up from the following sections:
 24" left hand end section 24" right hand end section
 24" center section 12" right hand end section

Assembly lengths with legs and tappings at each end:
 12" double end section 24" double end section

Model No. 8 Radiantrim Panels

Accessories

price
each

Extension panel (6 ft. length)	\$ 7.72
Extension panel supporting bracket	1.20
Extension panel connecting piece98
Compression corner connection	4.42
Assembly clamp	14.12
Alignment block with screw30

*Regularly furnished as required with Radiantrim panels—prices are shown for repair or replacement.

Accessories

price
each

*Center support screw leg	\$.12
*Tie bolt12
*End bracket with machine screw32
†Inverted corner cover	box of 10 19.40
†Projecting corner cover	box of 10 26.00
†Valve enclosure	box of 10 22.60

†Accessories packed 10 to a box available only in this minimum quantity.

Model No. 10 Radiantrim

Cast iron baseboard panels



square feet per lineal foot I-B-R steam rating	price per foot	
	lineal	square
3.4	\$7.00	\$2.06

Lengths (2½ to 30 ft.) made up from the following sections:
 18 or 24" left hand end sections, 24" center section, 12, 18 or 24" right hand end sections.

Assembly lengths with legs and tappings at each end:
 18 or 24" double end sections:

Model No. 10 Radiantrim Panels

Accessories

price
each

Extension panel (6 ft. length) with retaining bracket	\$10.52
*Corner accessory retaining bracket44
*Pipe enclosure retaining bracket32
Assembly clamp	14.12
Compression corner connection	4.42
Retaining clip for center section28
*End bracket with machine screw32
*Center support leg52
*Valve enclosure or end box retaining bracket88
*Tie bolt12

*Regularly furnished as required with Radiantrim panels—prices are shown for repair or replacement.

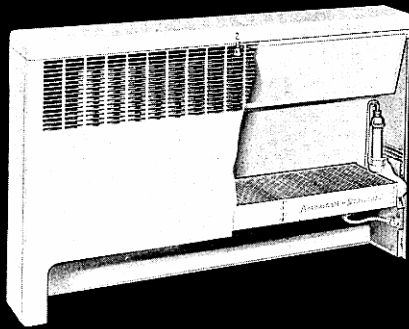
* Accessories

†price
per
box of 10

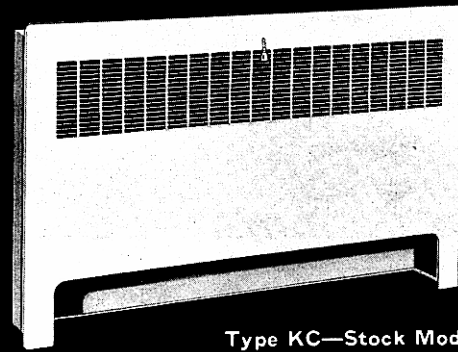
Inverted corner cover	\$30.40
Extended inverted corner cover	52.00
Projecting corner cover	38.60
End box—all RH or all LH	29.60
Valve enclosure—all RH or all LH	41.80
Inverted corner cover for pipe enclosure	25.40
Projecting corner cover for pipe enclosure	25.20
Pipe enclosure (24" length)	32.20

†Accessories packed 10 to a box available only in this minimum quantity.

★ Packed with recommended number of retaining brackets where required.



Type K—Stock Model



Type KC—Stock Model

New Multifin—Type K (expanded prices)

For use on two-pipe steam and hot water systems only

cabinet length inches	no. 4 depth (4¼" cabinet)			no. 6 depth (6¼" cabinet)			no. 8 depth (8¼" cabinet)		
	unit no.	sq ft output	price each	unit no.	sq ft output	price each	unit no.	sq ft output	price each
20" cabinet height									
20½	420-20	11.3	\$29.14	620-20	16.3	\$32.74	\$.....
24½	424-20	13.9	31.08	624-20	20.1	35.48
28½	628-20	23.8	38.14
32½	632-20	27.6	40.88	832-20	33.6	45.26
36½	636-20	31.3	43.54	836-20	38.1	48.58
40½	640-20	35.1	46.28	840-20	42.7	51.88
44½	644-20	38.8	49.00
48½	648-20	42.6	51.68	848-20	51.8	58.44
56½	656-20	50.1	57.08	856-20	60.9	65.06
64½	664-20	57.6	62.54	864-20	70.0	71.62
24" cabinet height									
20½	420-24	13.1	30.44	620-24	18.4	34.24
24½	424-24	16.1	32.60	624-24	22.7	37.28
28½	428-24	19.1	34.76	628-24	26.9	40.36
32½	632-24	31.1	43.40	832-24	37.9	48.36
36½	636-24	35.4	46.48	836-24	43.0	52.10
40½	640-24	39.6	49.52	840-24	48.2	55.78
44½	644-24	43.8	52.54
48½	648-24	48.1	55.64	848-24	58.4	63.26
56½	656-24	56.5	61.76	856-24	68.7	70.68
64½	664-24	65.0	67.80	864-24	78.9	78.16
32" cabinet height									
20½	620-32	19.7	35.12
24½	624-32	24.2	38.36
28½	628-32	28.7	41.60
32½	632-32	33.3	44.90	832-32	41.2	50.66
36½	636-32	37.8	48.14	836-32	46.8	54.70
40½	640-32	42.3	51.38	840-32	52.3	58.72
44½	644-32	46.8	54.62
48½	648-32	51.3	57.86	848-32	63.5	66.80
56½	656-32	60.4	64.42	856-32	74.6	74.86
64½	664-32	69.4	70.90	864-32	85.8	82.92

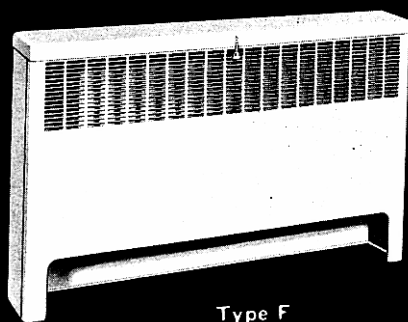
Plugs and bushings not furnished with New Multifin convectors.

Special air vent assemblies..... each **\$2.50**
 Metal trim strips..... each **5.50**

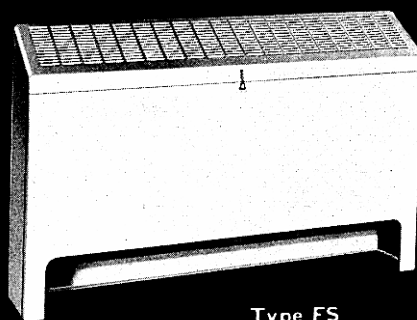
Chain type damper, standard length..... each **\$4.20**
 Snap-on inlet grille..... each **5.50**

New Multifin—Type KC

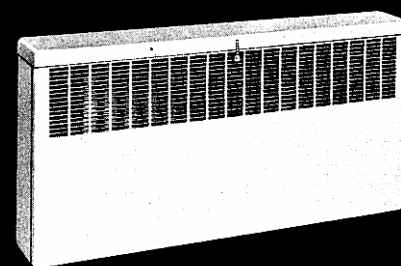
Same as type K but made in 6" depth—20 and 24" heights only.
 For type KC prices; add **\$3.00** to prices shown above for type K.



Type F



Type FS



Type W

New Multifin Convectors (non-ferrous element)

Combination price: Actual output in square feet of catalogue rating—steam (215° F) obtained with cabinet heights furnished determines price of convectors and cabinets sold in combination.

Total price of each order equals amount of catalogue square feet ordered multiplied

by price per square foot plus unit extra charge multiplied by total number of units ordered.

Standard cabinets furnished in reinforced prime painted sheet steel, 18 gauge front and 20 gauge back, ends and top.

cabinet type	description	prices	
		per sq ft	unit extra charge
stock model			
*K	Floor type—free standing or partially recessed.....	\$.72	\$21.00
*KC	Floor type—overlap front—partially recessed with 2½" flange.....	.72	34.00
special service line			
F	Floor type—free standing or partially recessed.....	.83	24.00
FS	Floor type—free standing—sloping top.....	.76	25.00
W	Wall hung—flat top.....	.74	23.80
S	Wall hung—sloping top.....	.66	23.20
†R	Floor type—overlap front—fully recessed with ½" flanged edges.....	.84	26.00
†RC	Floor type—overlap front—partially recessed with 2½" or 4½" flanges.....	.86	27.20

Note: Various other types of Special Service line convectors available. Prices and data on application.

*For expanded prices, see page 18. †Fronts fastened to lining with screws.

Convector cabinet extras—see page 20.

New Multifin Convector Elements Only (when sold without cabinets—steam or water)

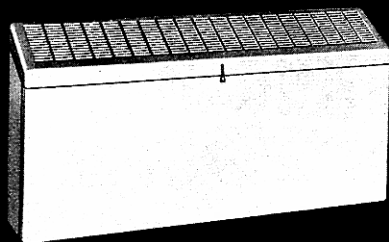
convector length inches	no. 4—3⅞" depth		no. 6—5⅞" depth		no. 8—7⅞" depth		no. 10—9⅞" depth	
	unit no.	price each	unit no.	price each	unit no.	price each	unit no.	price each
20	420	\$14.60	620	\$18.70	820	\$24.20	1020	\$33.60
24	424	15.80	624	20.30	824	26.30	1024	35.70
28	428	17.00	628	21.90	828	28.40	1028	38.00
32	432	18.10	632	23.40	832	30.60	1032	40.20
36	436	19.40	636	24.90	836	32.70	1036	42.40
40	440	20.60	640	26.50	840	34.90	1040	44.50
44	444	21.60	644	28.00	844	37.00	1044	46.80
48	448	22.80	648	29.50	848	39.20	1048	49.00
56	456	25.20	656	32.60	856	43.50	1056	53.40
64	464	27.60	664	35.70	864	47.80	1064	57.80

Plugs and bushings not furnished with New Multifin convectors.

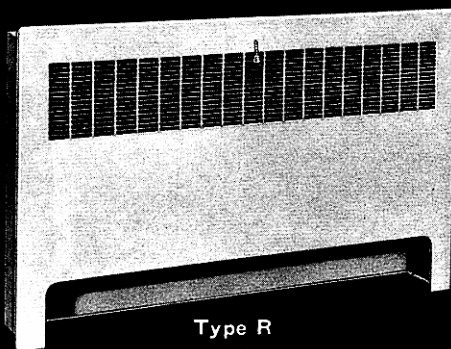
Special air vent assemblies..... each \$2.50

Note: Particular reference must be made on order if Special Service line convectors are to be used on one-pipe steam systems.

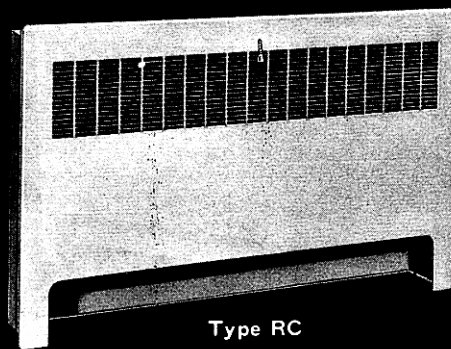
New Multifin convectors—for two-pipe steam or water systems—cannot be used, or modified, for one-pipe systems.



Type S



Type R



Type RC

Arco Convectors (Special Service line)

Cast iron heating element—when sold in combination with standard cabinets

Combination price: Actual output in square feet of catalogue rating—steam (215° F) obtained with cabinet heights furnished determines price of convectors and cabinets sold in combination.

plied by price per square foot plus unit extra charge multiplied by total number of units ordered.

Total price of each order equals amount of catalogue square feet ordered multi-

Standard cabinets furnished in reinforced prime painted sheet steel, 18 gauge front and 20 gauge back, ends and top.

Arco Convectors

cabinet type	description	prices	
		per sq ft	unit extra charge
S	Wall hung—sloping top.....	\$2.28	\$28.80
†R	Floor type—overlap front—fully recessed with ½" flanged edges.....	2.26	30.60
†RC	Floor type—overlap front—partially recessed with 2½ or 4½" flanges.....	2.26	33.20
F	Floor type—free standing or partially recessed.....	2.28	28.80
FS	Floor type—free standing—sloping top.....	2.28	28.80
W	Wall hung—flat top.....	2.28	28.80

Note: Various other types available—prices and data on application.

†Fronts fastened to linings with screws.

Convector cabinet extras—see below.

Arco Convector Elements Only (when sold without cabinets—steam or water)

convector length inches	no. 4—3¼" depth		no. 6—5½" depth		no. 8—7¾" depth		no. 10—9½" depth	
	unit no.	price each	unit no.	price each	unit no.	price each	unit no.	price each
18	418	\$21.66	618	\$ 31.88	818	\$ 40.16	1018	\$ 48.42
23	423	27.94	623	41.12	823	51.96	1023	62.58
28	428	34.24	628	50.40	828	63.78	1028	76.94
33	433	40.56	633	59.82	833	75.58	1033	91.10
38	438	46.84	638	69.10	838	87.20	1038	105.48
43	443	52.94	643	78.34	843	99.00	1043	119.66
48	448	59.22	648	87.60	848	110.80	1048	134.02
53	453	65.54	653	96.82	853	122.62	1053	148.36
58	458	71.84	658	106.08	858	134.42	1058	162.56
63	463	78.14	663	115.52	863	146.22	1063	176.72

Arco convectors in lengths and depths indicated above are standardized sizes when sold with or without cabinets.

Cabinet extras—Special Service line—for Arco and New Multifin convectors

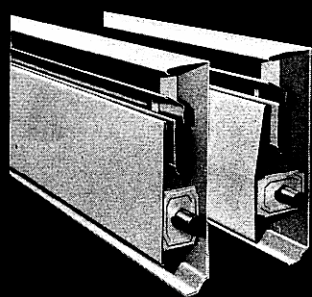
	price each
Access door.....	\$4.40
Dampers: Chain type—standard length.....	4.20
Knob type—standard length (not available for types FS and S).....	5.00
Inlet grille—for floor type cabinets (no access door included).....	per sq. ft. of cabinet output .06
Stool outlet grille—instead of front outlet grille—for types F or W only.....	regular price plus 2.80
Extra length on standard cabinets, all types except W and S.....	per inch of extra length 1.00

Note: Types W and S available only in standard lengths.

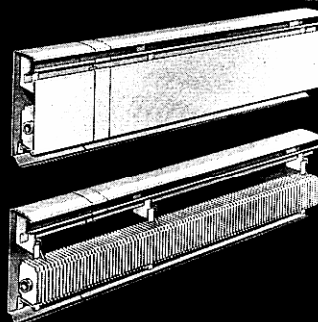
An "order charge" of \$13.16 for all orders of less than ten (10) units.

A "special feature" charge of \$13.16 per feature per order for extra charge items (except inlet grilles and chain type dampers).

Model 75-A



Model 75-B



Model 100



Heatrim—Model 75—non-ferrous heating element— $\frac{3}{4}$ " tube

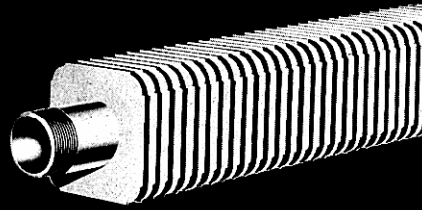
description	price each	
	model 75-A	model 75-B
Complete unit: Packaged in 4, 5, 6 and 8 ft. lengths only. (element, one-piece back and top, front panel, 1 set joining pieces, air vane and brackets)	4 ft. length \$20.80	\$21.60
	5 ft. length 26.00	27.00
	6 ft. length 31.20	32.40
	8 ft. length 41.60	43.20
Enclosure only: Packaged in 4, 5, 6 and 8 ft. lengths only. (one-piece back and top, front panel, 1 set joining pieces, air vane and brackets)	4 ft. length 8.40	9.20
	5 ft. length 10.50	11.50
	6 ft. length 12.60	13.80
	8 ft. length 16.80	18.40
Element only: Packaged in 4, 5, 6 and 8 ft. lengths only. (packaged 4 per box)	4 ft. length 12.40	12.40
	5 ft. length 15.50	15.50
	6 ft. length 18.60	18.60
	8 ft. length 24.80	24.80
Accessories:		
Inverted corner cover	box of 10 17.60	17.60
Projecting corner cover	box of 10 17.60	17.60
Valve enclosure—all right or all left hand	box of 10 33.00	33.00
End cover—all right or all left hand	box of 10 17.60	17.60
One foot filler piece	box of 5 18.50	18.50
Dampers: Packaged in 4, 5, 6 and 8 ft. lengths. (packaged 10 per box)	4 ft. length 2.08	2.08
	5 ft. length 2.60	2.60
	6 ft. length 3.12	3.12
	8 ft. length 4.16	4.16
Replacement parts:		
Enclosure fronts	4 ft. length 2.40	2.40
	5 ft. length 3.00	3.00
	6 ft. length 3.60	3.60
	8 ft. length 4.80	4.80
Enclosure air vane	4 ft. length .72	.72
	5 ft. length .90	.90
	6 ft. length 1.08	1.08
	8 ft. length 1.44	1.44
Front joining pieces	set .46	.46
Element support brackets with hanger and bottom clip	each .70	.70

Heatrim—Model 100—non-ferrous heating element—1" tube

description	price each
Complete unit: Packaged in 6 ft. lengths only. (element, one-piece back and top, front panel, 1 set joining pieces, air vane and brackets)	6 ft. length \$39.60
Enclosure only: Packaged in 6 ft. lengths only. (one-piece back and top, front panel, 1 set joining pieces, air vane and brackets)	6 ft. length 14.40
Element only: Packaged in 6 ft. lengths only. (packaged 4 per box)	6 ft. length 25.20
Accessories:	
Inverted corner cover	box of 10 17.60
Projecting corner cover	box of 10 17.60
Valve enclosure—all right or all left hand	box of 10 33.00
End cover—all right or all left hand	box of 10 17.60
One foot filler piece	box of 5 18.50
Dampers: Packaged in 6 ft. lengths only	6 ft. length 3.60
Replacement Parts:	
Enclosure front only	6 ft. length 3.60
Enclosure air vane	6 ft. length 1.08
Front joining pieces	set .46
Element support brackets with hanger and bottom clip	each .70



Temtrim Elements

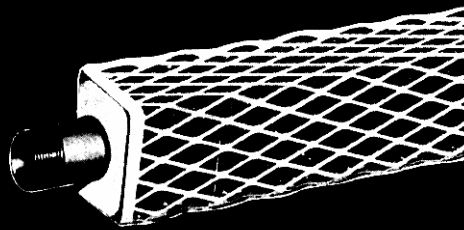


Bare Element

number	tube size inches	fin size inches	fin size inches	fins per lineal ft	price per lineal ft
1324	1 1/4	3/4 x 3/4	3/4 x 3/4	24	\$3.18
1334	1 1/4	3/4 x 3/4	3/4 x 3/4	34	3.80
1428	1 1/4	4/4 x 4/4	4/4 x 4/4	28	4.38
1436	1 1/4	4/4 x 4/4	4/4 x 4/4	36	5.04
2428	2	4/4 x 4/4	4/4 x 4/4	28	4.94
2436	2	4/4 x 4/4	4/4 x 4/4	36	5.22

Elements in lengths from 2 to 12 ft. in 1 ft. increments.

Expanded Metal Grilles



Expanded Metal Grille

number	fin size inches	tiers	price per lineal foot	number	fin size inches	tiers	price per lineal foot
EG-3-1	3/4	1	\$1.20	EG-4-1	4/4	1	\$1.52
EG-3-2	3/4	2	2.40	EG-4-2	4/4	2	3.04
EG-3-3	3/4	3	3.60	EG-4-3	4/4	3	4.56

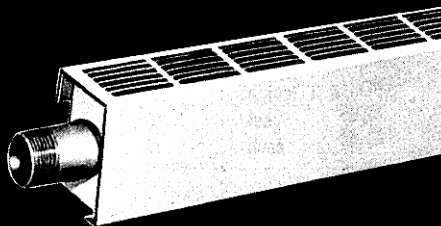
Grilles in lengths from 1 to 8 ft. in 1 ft. increments.

Inside Corners (EI) or Outside Corners (EO)

number	fin size inches	tiers	price each	number	fin size inches	tiers	price each
EI or EO-3-1	3/4	1	\$2.32	EI or EO-4-1	4/4	1	\$2.32
EI or EO-3-2	3/4	2	3.46	EI or EO-4-2	4/4	2	3.46
EI or EO-3-3	3/4	3	4.62	EI or EO-4-3	4/4	3	4.62

Accessories for expanded metal grilles fabricated of sheet steel.

Flat Top Covers



Flat Top Cover

number	fin size inches	tiers	price per lineal foot	number	fin size inches	tiers	price per lineal foot
FC-3-1	3/4	1	\$2.06	FC-4-1	4/4	1	\$2.16
FC-3-2	3/4	2	2.90	FC-4-2	4/4	2	3.00
FC-3-3	3/4	3	3.82	FC-4-3	4/4	3	3.92

Covers in lengths from 1 to 8 ft. in 1 ft. increments.

number	fin size inches	tiers	price each	number	fin size inches	tiers	price each
FI or FO-3-1	3/4	1	\$2.32	FI or FO-4-1	4/4	1	\$2.32
FI or FO-3-2	3/4	2	3.46	FI or FO-4-2	4/4	2	3.46
FI or FO-3-3	3/4	3	4.62	FI or FO-4-3	4/4	3	4.62

Inside Corners (FI) or Outside Corners (FO)

number	fin size inches	tiers	price each	number	fin size inches	tiers	price each
FI or FO-3-1	3/4	1	\$2.32	FI or FO-4-1	4/4	1	\$2.32
FI or FO-3-2	3/4	2	3.46	FI or FO-4-2	4/4	2	3.46
FI or FO-3-3	3/4	3	4.62	FI or FO-4-3	4/4	3	4.62

End Covers

number	fin size inches	tiers	price each	number	fin size inches	tiers	price each
FE-3-1	3/4	1	\$1.16	FE-4-1	4/4	1	\$1.16
FE-3-2	3/4	2	1.62	FE-4-2	4/4	2	1.62
FE-3-3	3/4	3	2.08	FE-4-3	4/4	3	2.08

Fixed Brackets

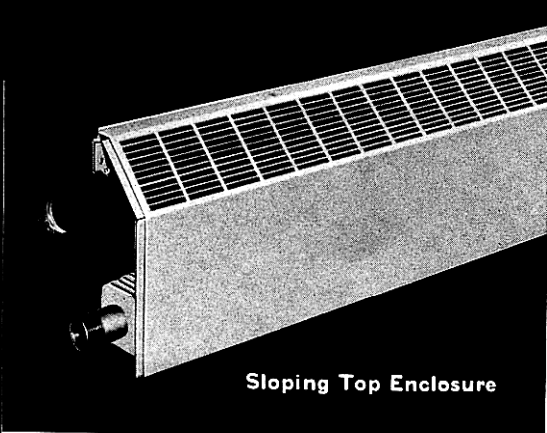
Expansion Brackets

number	tube size inches	fin size inches	price each	number	tube size inches	fin size inches	price each
FB-1-3	1 1/4	3/4	\$.50	EB-1-3	1 1/4	3/4	\$1.78
FB-1-4	1 1/4	4/4	.50	EB-1-4	1 1/4	4/4	1.78
FB-2-4	2	4/4	.50	EB-2-4	2	4/4	1.78

Brackets for installation of bare elements, with expanded metal grilles or with flat top covers.



Temtrim radiation



Sloping Top Enclosure

Sloping Top Enclosures

number	fin size inches	tiers	price per lineal foot	number	fin size inches	tiers	price per lineal foot
SE-3-1	3¼	1	\$2.90	SE-4-1	4¼	1	\$2.90
SE-3-2	3¼	2	3.96	SE-4-2	4¼	2	3.96
SE-3-3	3¼	3	4.92	SE-4-3	4¼	3	4.92

Enclosures in lengths from 1 to 8 ft. in 1 ft. increments.

Fixed Brackets

number	tube size inches	fin size inches	price each
FBS-1-3	1¼	3¼	\$.82
FBS-1-4	1¼	4¼	.82
FBS-2-4	2	4¼	.82

Expansion Brackets

number	tube size inches	fin size inches	price each
EBS-1-3	1¼	3¼	\$1.30
EBS-1-4	1¼	4¼	1.30
EBS-2-4	2	4¼	1.30

number	fin size inches	tiers	price each
--------	-----------------	-------	------------

number	fin size inches	tiers	price each
--------	-----------------	-------	------------

Back Plates

BS-3-1	3¼	1	\$2.20	BS-4-1	4¼	1	\$2.20
BS-3-2	3¼	2	2.60	BS-4-2	4¼	2	2.60
BS-3-3	3¼	3	3.00	BS-4-3	4¼	3	3.00

Inside Corners (SI) or Outside Corners (SO)

SI or SO-3-1	3¼	1	\$2.90	SI or SO-4-1	4¼	1	\$2.90
SI or SO-3-2	3¼	2	4.30	SI or SO-4-2	4¼	2	4.30
SI or SO-3-3	3¼	3	5.80	SI or SO-4-3	4¼	3	5.80

End Covers

SE-3-1	3¼	1	\$1.40	SE-4-1	4¼	1	\$1.40
SE-3-2	3¼	2	2.00	SE-4-2	4¼	2	2.00
SE-3-3	3¼	3	2.60	SE-4-3	4¼	3	2.60

DS Damper—3¼ or 4¼" fins—furnished in lengths from 1 to 8 ft. in 1 ft. increments..... per lineal ft. \$1.38
 RS-50 Rubber sealing strip—50 ft. rolls only—¼" diameter sponge rubber rope..... per roll 9.00

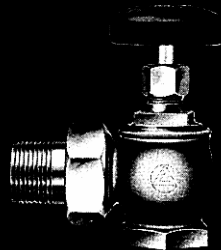
Cover Strips (3, 6, 12 or 18" widths)

number	ordering instructions	price each		
		1 tier	2 tier	3 tier
CS-3	Specify basic enclosure number.....	\$.70	\$.90	\$1.10
CS-6		1.20	1.50	1.90
*CS-12		6.50	7.28	7.96
*CS-18		7.40	8.72	9.74

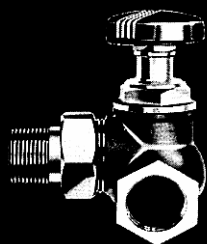
Full Back Panels

number	ordering instructions	price per lineal foot		
		1 tier	2 tier	3 tier
BP-3	Specify basic enclosure number.....	\$.90	\$1.40	\$1.90
BP-4		.90	1.40	1.90

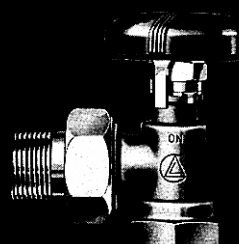
*Price includes 3¼ x 4½" hinged access door—specify right or left hand.



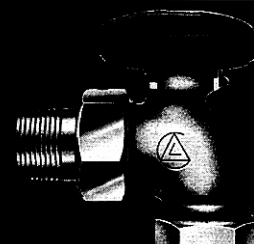
No. 72



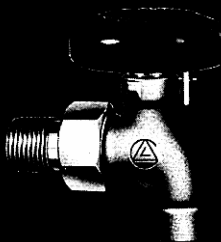
No. 941



No. 902



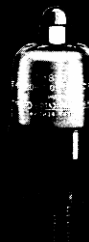
No. 116



No. 216



No. 316



No. 861



No. 5000

Detroit Radiator Valves

Packed type—price each

no.		½"	¾"	1"	1¼"	1½"
72	Angle, steam.....	\$4.75	\$5.39	\$6.67	\$8.19	\$10.32
101	Angle, H.W.....	3.60	4.29	5.39	6.91	8.72
132	Union elbow.....	1.95	2.32	3.23	4.29	5.81
373	Gate.....	12.83	15.20	17.55	22.06	28.99

Packless type—price each

no.		½"	¾"	1"	1¼"	1½"
941	L.H. corner.....	\$14.11	\$16.43	\$19.55	\$24.27	\$32.00
945	R.H. corner.....	14.11	16.43	19.55	24.27	32.00
949	Globe.....	12.83	15.20	17.55	22.06	28.99
995	Graduated.....	11.36	13.01	15.52	19.66
999	Angle, steam....	10.19	11.89	14.06	17.84	23.20

No. 207 Extension Stems (for all valve sizes)

size.....	1'	2'	3'	4'	5'
price each.....	\$7.28	\$8.59	\$8.99	\$9.39	\$10.00

Detroit Circulator Valves

no.		price each		
		½"	¾"	1"

Threaded inlet—threaded tail pipe

902	Packless angle.....	\$6.72	\$7.65	\$.....
116	Angle.....	4.45	5.44	10.05
117	Straight.....	4.45	5.44	10.05
133	Balancing elbow.....	3.55	4.19	8.48
134	Straight balancing fitting.....	3.55	4.19	8.48
135	Angle, baseboard type.....	4.45	5.44

Sweat inlet—threaded tail pipe

216	Angle.....	4.45	5.44	10.05
217	Straight.....	4.45	5.44	10.05
232	Union elbow.....	2.05	2.80
233	Balancing elbow.....	3.55	4.19	8.48
234	Straight balancing fitting.....	3.55	4.19	8.48
235	Angle, baseboard type.....	4.45	5.44

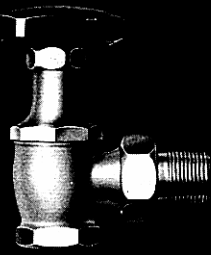
Sweat inlet—sweat tail pipe

316	Angle.....	4.45	5.44	10.05
317	Straight.....	4.45	5.44	10.05
332	Union elbow.....	2.05	2.80
333	Balancing elbow.....	3.55	4.19	8.48
334	Straight fitting (without union).....	3.12	3.57
335	Straight fitting.....	3.55	4.19	8.48
433	Vented balancing elbow.....	4.43	8.85

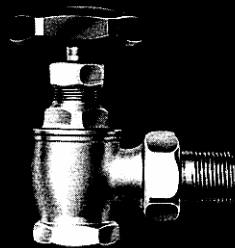
Detroit Air Valves and Adapters

no.		price each
500	Airid, ⅛".....	\$ 3.90
510	Vac Airid, ⅛".....	5.10
861	Hurivent, ¾ x ½".....	14.30
862	Vac-Hurivent, ¾ x ½".....	19.20
5000	Airid Variport, ⅛".....	5.20

no.		price each
306	Adapter, ⅛", short.....	\$ 1.30
307	Adapter, ¼", short.....	1.30
308	Adapter, ¾", short.....	1.70
309	Adapter, ⅛", long.....	1.70



No. 180



No. 187



No. 1-A



No. 75

Hoffman Valves

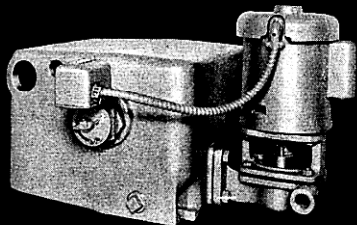
Packless Radiator Valves

number	description	price each				
		½"	¾"	1"	1¼"	1½"
180	Angle (spring packed).....	\$ 8.24	\$ 9.20	\$11.36	\$14.24	\$18.48
180-B	Straightway (spring packed).....	9.20	12.72	15.12	18.80	24.32
180-C	Left Hand (spring packed).....	11.60	13.52	15.84	19.52	27.60
180-D	Right Hand (spring packed).....	11.60	13.52	15.84	19.52	27.60
187	Steam and hot water, angle, (disc type).....	5.20	5.68	6.88	8.64	10.56

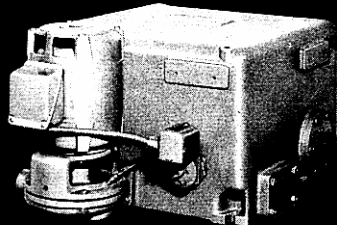
Venting Valves

number	description	price each
1-A	Steam, adjustable port—⅛" angle connection.....	\$ 5.44
40	Steam, non-adjustable port—⅛" angle connection.....	2.16
75	Main vent, medium size mains—¾" male, ½" female connection.....	14.94
79	Hot water—¾" male, ½" female connection.....	13.30
500	Steam or hot water—⅛" connection.....	2.26

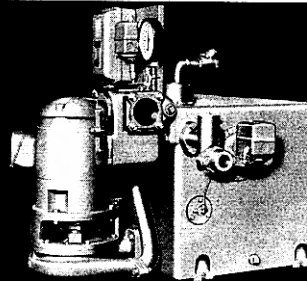
Other types, sizes of radiator and venting valves available—prices on application.



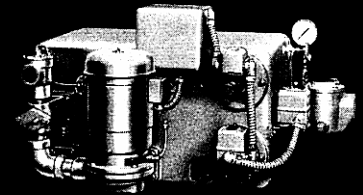
"Watchman" Condensation Pump WC-8-20 Single Unit



Condensation Pump "HCS" Single Unit



Vacuum Pump "VS" Single Unit



Vacuum Pump "HVS" Single Unit

Hoffman Condensation and Vacuum Pumps

Condensation Pumps

Consist of pump motor and cast iron receiver, assembled, ready for installation. They are designed to operate at a wider range of pressures without overloading the motor and are especially adapted for operation at the higher pressures encountered in condensation pump service. They employ a vertical drive, close coupled pump for perfect alignment and accessibility. All submerged parts are of bronze or other

non-corrosive material.

The Watchman WC-8-20 condensation pump is a standard single unit designed for systems up to 8,000 sq ft EDR and 20 lbs discharge pressure. Pump is bronze fitted with stainless steel shaft. Receiver capacity 9 gal, pump capacity 12 GPM, ½ HP motor, 3450 RPM, single phase only, 60 cycle, 115/230 volts.

Vacuum Pumps

All vacuum pumps have a centrifugal pump fitted with enclosed type non-overloading bronze impeller, carefully machined. Employ jet type vacuum producer for most effective means of simultaneously removing air and water. Receiver is of heavy cast iron, automatic controls standard equipment on all units. Made for discharge pressures from 20 to 60 lbs per sq in. Type HVS, HVSS, HVD and HVSD

units have a two compartment cast iron receiver with low inlet. These units are available from 2,500 through 20,000 sq ft EDR and from 20 to 40 lbs discharge pressure. They are engineered to remove up to 300% of rated capacities at start of heating cycle, resulting in a shorter warm-up period.

When ordering, specify: Single or duplex, size, type, pressure and current characteristics (voltage, phase and cycle).

Prices and specifications on application.