

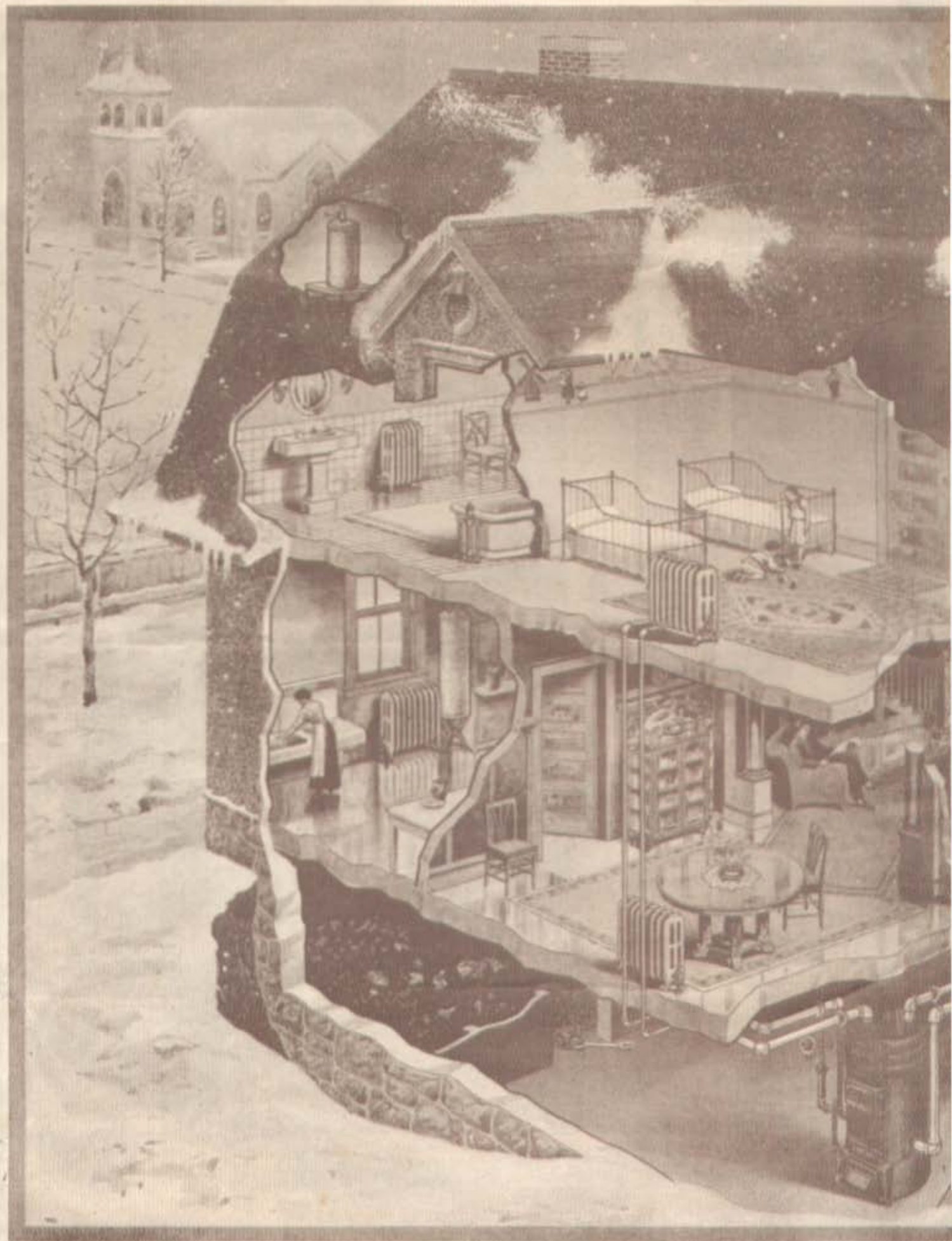


Showing the Complete
Installation of a

Windsor Heating System

The Kind that Makes Cozy,
Comfortable Homes

MONTGOMERY WARD & CO.'S SPECIAL HEATING CATALOGUE



Improved
**Giant Windsor
Boiler**
for
**Steam
Heating**

Round Fire-pot—no
dead corners—no
fuel waste.

Maintains any desired
pressure by means
of self-regulating
diaphragm.

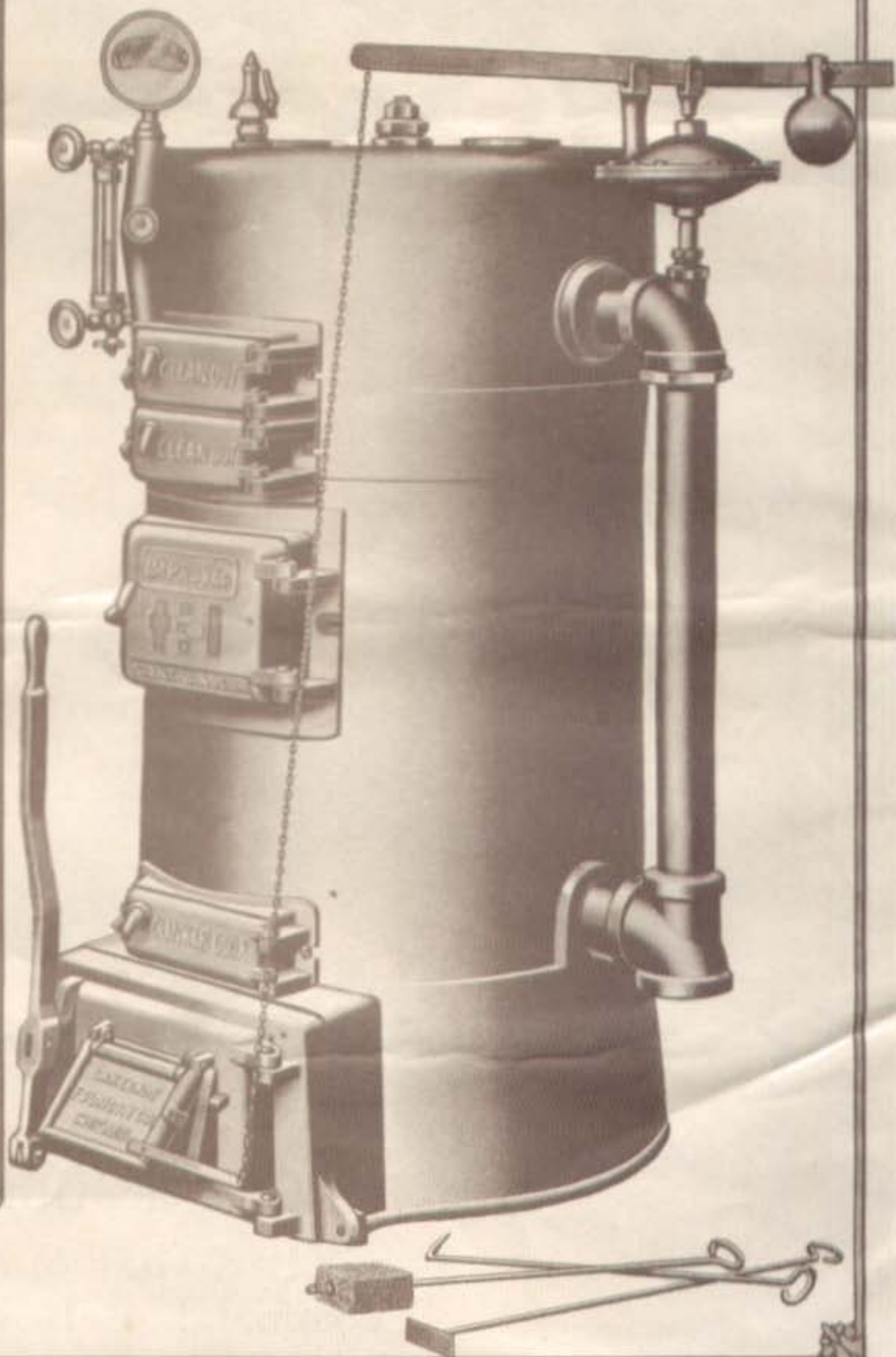
Holds fire 12 to 24
hours.

Quiet and safe in its
operation.

We know of none
better.

This Boiler Furnished
with every

**Windsor
Steam Heating
System**



Improved
**Giant Windsor
Boiler**
for
**Hot Water
Heating**

=

Round construction.

Efficient design.

Economical in fuel.

Easy to operate.

All parts heavy, strong
and substantially made.

Perfect in workmanship,
finish and material.

=

This Boiler Furnished
with every

**Windsor
Hot Water
Heating System**

=



CLEAN OUT

CLEAN OUT

CLEAN OUT

IMPROVED

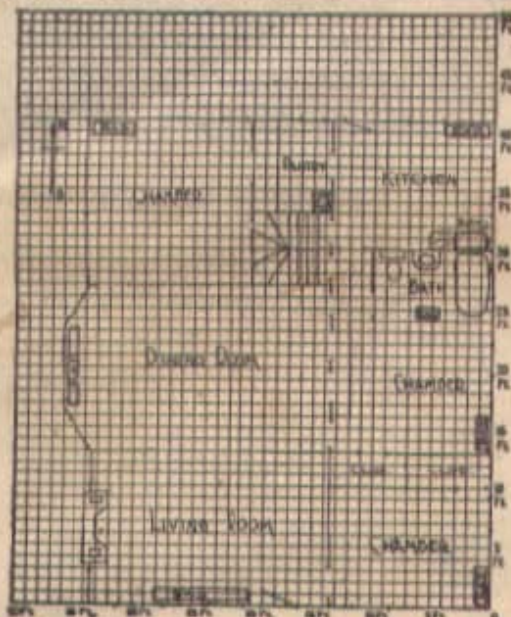
GIANT WINDSOR

CLINKER DOOR

LAKESIDE
FOUNDRY CO.
CHICAGO

Estimates on Heating Plants Cheerfully Given

Be sure all questions are answered before returning this blank.
A Windsor System defeats the coal man and zero weather.



Sample Plan Showing Radiators

This sample plan shows what is needed before our Heating Engineers can figure on a Heating System that will meet your requirements. Draw up a rough sketch of each of your floors, similar to the above, on the ruled blanks on inside of this blank.

Allow each space to represent one foot and you will find it an easy matter to lay out a plan of your building. Use inside measurements of room only.

Date		191
Name		
Post Office		
R. F. D. No.	State	
P. O. Box No.	Street and No.	
Shipping Point		County

Please Note—Without the information requested below it will be impossible for us to make an estimate.

Do you want estimate for Steam, Hot Water, or Warm Air Heating Plant? _____

When will you be ready to purchase? _____

Is your house built of frame or brick? (Hollow or Solid Walls)? _____

(IMPORTANT—Which way does house front, North, East, South or West?) _____

Does the house stand alone out in the open, or is it protected by other buildings? _____

On which side is it protected from winds? _____

Do you use storm doors or windows? _____

Is house warmly constructed, or do you consider it a hard house to heat? _____

Locate boiler on basement plan, giving direction front is to face. _____

State height of cellar to under side of joist at point where boiler will be placed. _____

Does cellar extend under entire building; if not, under which rooms? _____

What is the size of chimney you intend to use for the heating system (inside measurements)? _____

Have you connection to city water in your basement? _____
If so, indicate on basement plan where connection can be made for heating system.

Give size of studding in partition walls. (For Warm Air Only.) _____

How far apart are studs placed? (For Warm Air Only.) _____

In which direction does joist run in basement? (For Warm Air Only.) _____ Also beam _____

Will you burn hard coal, soft coal, wood or coke? _____

IMPORTANT—State lowest outside temperature in your locality. _____

REMARKS _____

Montgomery Ward Co.
Satisfaction Guaranteed or Your Money Back

Fill Out This Blank and Return for Estimate

Fill in the blank spaces with the information desired. It will place you under no obligation whatever. We make no charge for estimates on Heating Systems. And if you order from us, we send you complete Plans and Instructions that make the installing easy.

Be Sure to Give All Measurements Called for on This Chart
Give Inside Dimensions of All Rooms

Without the following dimensions it will be impossible for us to make an estimate

First Floor	Temperature Desired	WIDTH		LENGTH		HEIGHT		Give Number of Outside		SIZE OF WINDOWS				SIZE OF OUTSIDE DOORS			
								Doors	Win-dows	Width		Height		Width		Height	
		Feet	Inches	Feet	Inches	Feet	Inches			Feet	Inches	Feet	Inches	Feet	Inches	Feet	Inches
A Reception																	
B Parlor																	
C Living																	
D Library																	
E Dining Room																	
F Bedroom																	
G Bedroom																	
H Bedroom																	
I Bathroom																	
J Back Hall																	
K Office																	
L Kitchen																	
Second Floor																	
M Bedroom																	
N Bedroom																	
O Bedroom																	
P Bedroom																	
Q Bedroom																	
R Bedroom																	
S Bathroom																	
T Sewing Room																	
U Nursery																	

If there is a third floor to your building, give us full dimensions of rooms same as above—also diagram. Mark rooms which you have found to be the coldest or hardest to heat with an (X).

Please Sketch Plan of Each

Be sure to mark where chimney and radiators are to be located. Radiators give best results when placed along outside or coldest walls. This insures you against cold floors. Try to arrange the location of radiators in such a manner that the ones on second floor will be directly

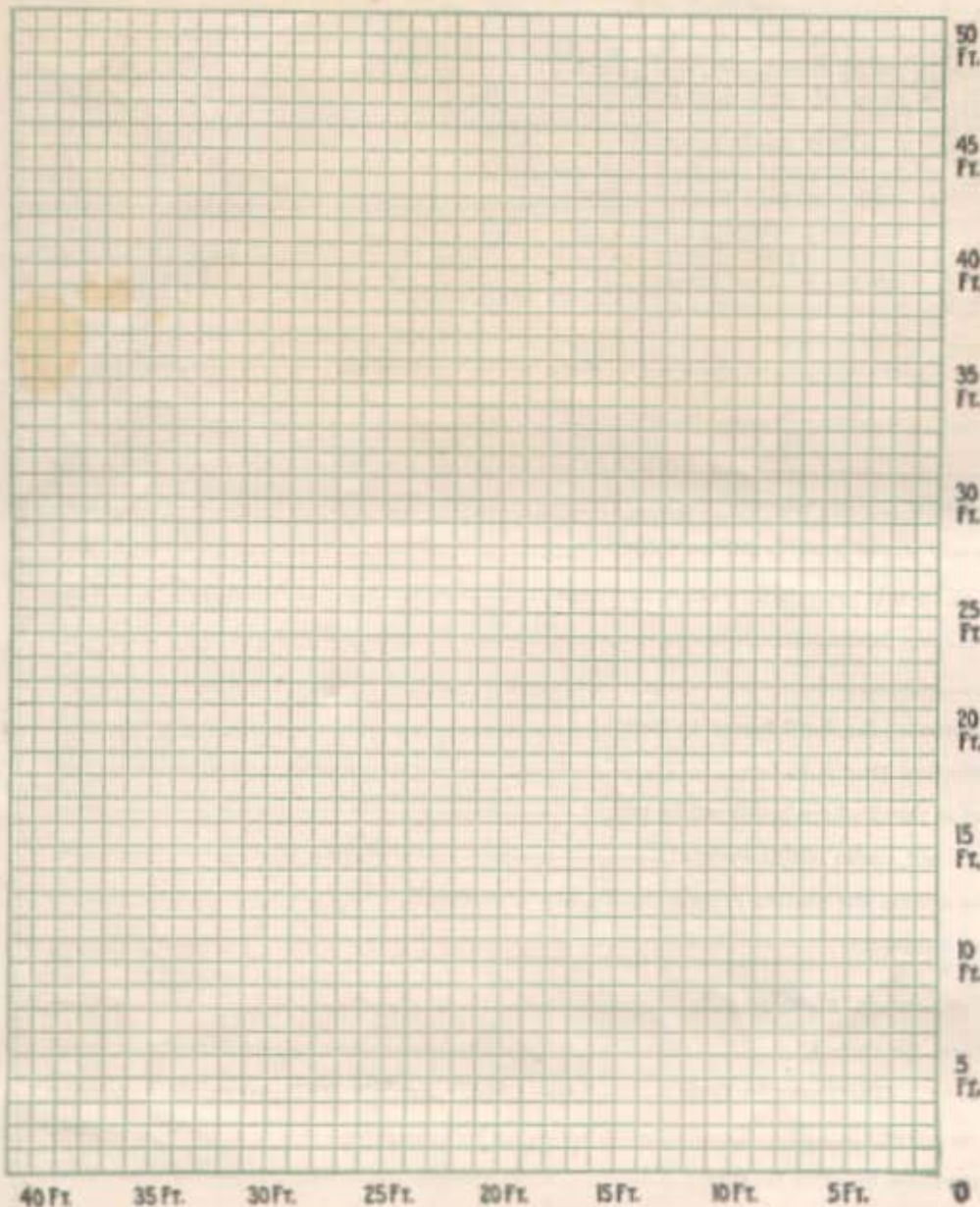
above the first floor position. cost of material considered. represent one foot in length. room use only inside dimensions. a single line, this will also

BASEMENT—Give Height _____ Ft. _____ In.

FIRST FLOOR—Give Height _____ Ft. _____ In.

Mark on This Plan the Position of Chimney and Boiler

Indicate Location of Radiators



Every Heating Plant That We Sell is Backed by

Be sure to mark the points of the compass on the diagram. Each space between the lines on the diagrams can represent one foot.

Montgomery
Satisfaction Guaranteed

CHICAGO

KANSAS CITY

ch Floor in Squares Below

ns. This will cut down the
bly. Let each square below
or width. In laying out the
ions. Represent the walls by
w you more room for layout.

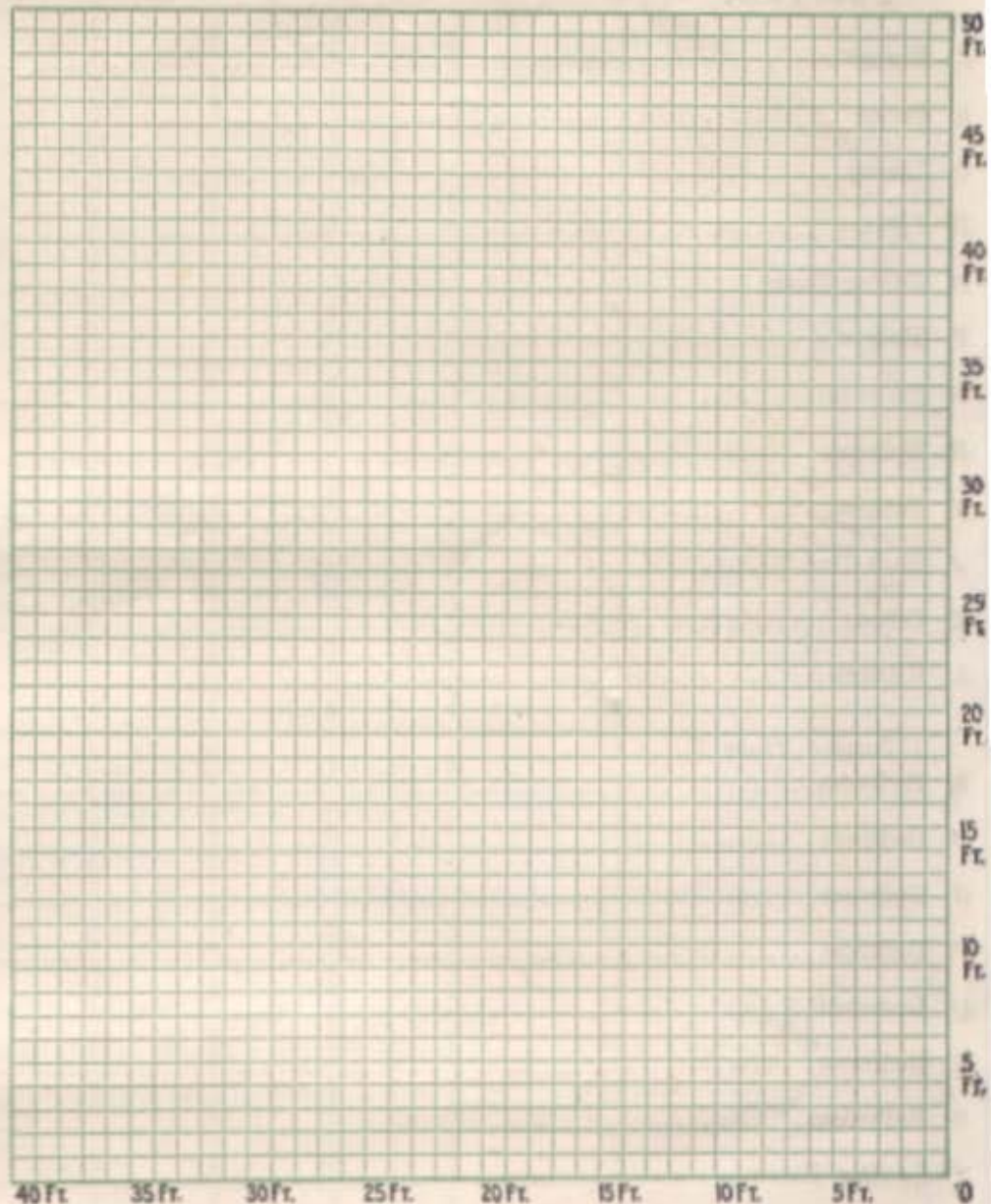
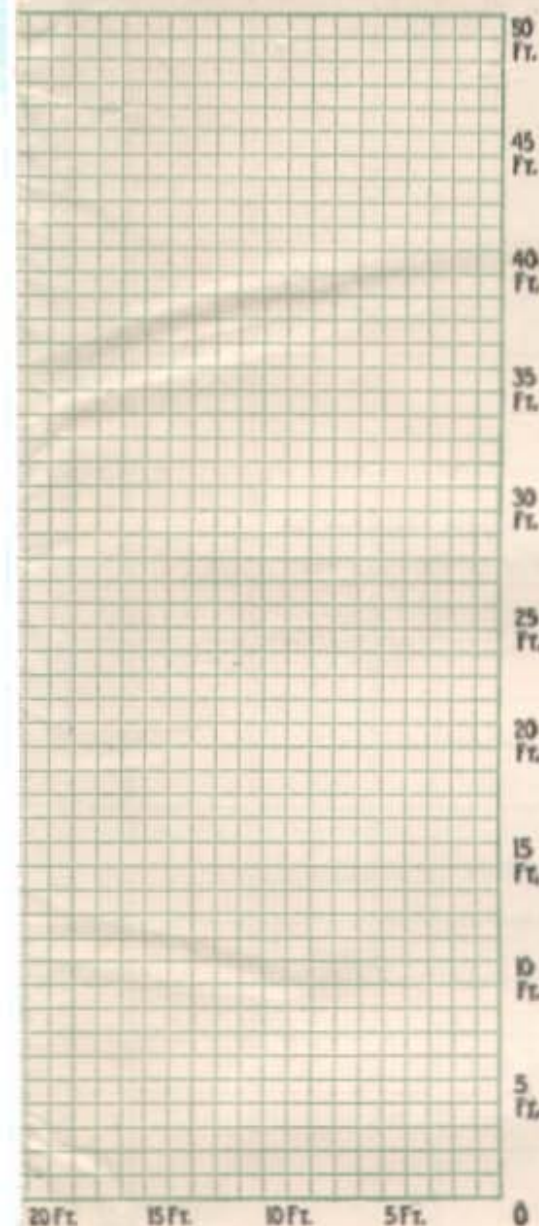
Mark each room on your sketch with letters cor-
responding to the letters given the various rooms on
opposite side of this blank, or mark room as shown
on sample sketch, with references "Dining Room,"
"Living Room," etc.

Height _____ Ft. _____ In.

SECOND FLOOR—Give Height _____ Ft. _____ In.

Radiator or Register by RAD

Indicate Location of Radiator or Register by RAD



Our Strong Guarantee of Absolute Satisfaction

Ward Co.
or Your Money Back

FORT WORTH

PORTLAND, ORE.

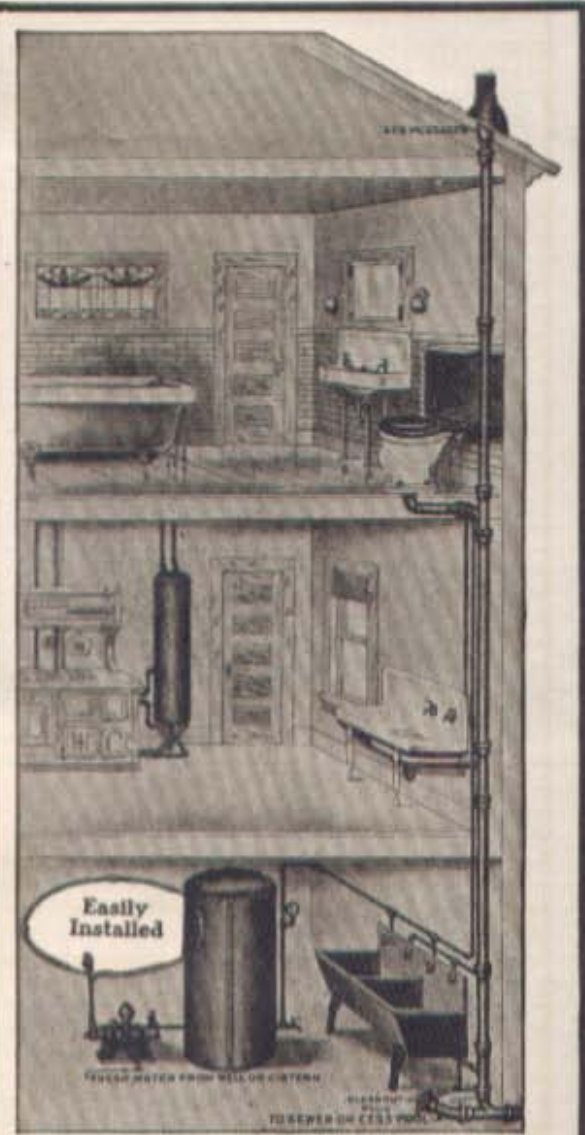
We lend you the tools to install the system,
as per our special loan offer fully described in our
heating catalogue.

We Will Give You a Complete Estimate Free of Charge

Fill in the blank spaces with the information desired. It will place you under no obligation whatever. We make no charge for estimates on Plumbing Systems.

Date		191	
Name			
Post Office			
R. F. D. No.	State		
P. O. Box No.	Street and No.		
Shipping Point	County		

ARTICLE	ARTICLE No.	SIZE	PRICE
Bath Room Outfit			
Bath Room Accessories			
Kitchen Sink			
Range Boiler			
Gas, Gasoline or Kerosene Water Heater			
Laundry Tubs			
Mop Sink			
Water Supply System			
Plumbing Tools			



The Average Installation in a Country or Suburban Home

The above illustration suggests the best way to place the various fixtures so that they may be installed with the least labor and expense, as only one soil pipe is needed.

If this style of arrangement can be carried out in your home we recommend that you make your sketch accordingly.

If, however, the bathroom will be on an opposite side of the house from the kitchen, it may be best to provide two separate soil pipe stacks. We will plan everything for you; all you need to do is give us all the information called for on this blank.

Montgomery Ward Co.
 Satisfaction Guaranteed or Your Money Back

Chicago

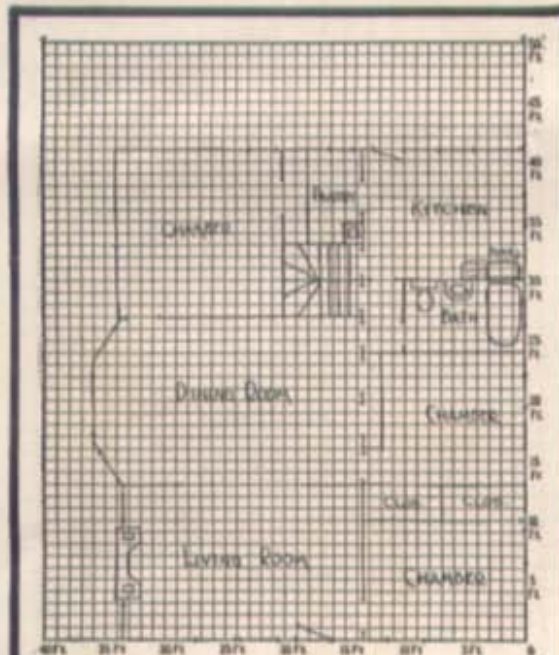
Kansas City

Fort Worth

11

Fill Out This Blank Carefully and Send in for Estimate

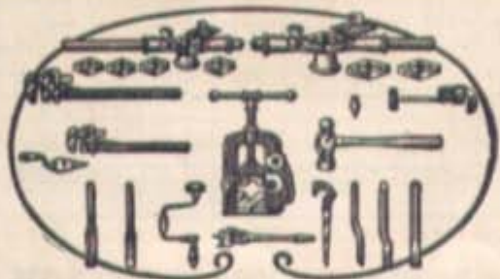
Be sure to give us all the information asked for, so that we can figure correctly. *We can save you money on your Plumbing System. Satisfaction guaranteed.*



Sample Plan Showing First Floor

The above sample plan shows what is needed before our engineer can figure on a system of plumbing that will meet your requirements. Draw up a rough sketch of each of your floors, similar to the above, on the ruled blanks on inside of this sheet.

Allow each space to represent one foot and you will find it an easy matter to lay out a plan of your building. Use inside measurements of room only.



We will Lend You These Plumbers' Tools

Whenever a complete plumbing system of \$75.00 or more is purchased, we will, if requested, lend a complete set of tools for installing, according to our special offer in our Plumbing Catalogue. Illustration shows outfit for use with Wardway Soil Pipe Cement; we also have an outfit for use with lead for calking joints.

We will add the tools to your order on request when the shipment is made, making a temporary charge for them, as described in our Plumbing Catalogue. When the tools are returned to us, freight paid, we will refund the amount charged.

For Plumbing System

- Is water supply pipe connected to building at present time?.....
If so, indicate where on your sketch.
- If not, how far is it to source of water supply, where pipe from house is to be connected?.....
- If you receive your water supply from city water works, what is the highest pressure? You can find this out at city water works.....
- Give height from ground to roof where soil pipe stack will be located.....
- How far is it from your house to sewer or cesspool?.....
- Do you want us to include in our estimate, sufficient cast iron soil pipe, with Wardway soil pipe cement and oakum, to make connection between your house and sewer or cesspool, or do you prefer to use tile for this purpose?.....
- Do you want waste and supply pipes to wall or to floor? (In old buildings it is easier to run them to floor; in a building being constructed, it is neater to run them to wall)
- Do you wish Standard or Extra Heavy Soil Pipe?.....
- Do you want to have both hot and cold water supplied to the different plumbing fixtures?.....
- Do you also want rain water connected to some of the fixtures? If so, to which?.....
- Is the soil pipe to be concealed in the wall or exposed in the room?..... (Important)
- Will it be necessary to follow city ordinances when installing the plumbing system?.....

NOTE—If necessary to follow city ordinances, get a copy of same from your local authorities, and send it to us with this blank. We will prepare our estimate accordingly.

For Water Supply System

If You Want Us to Include One of Our Modern Water Supply Systems, Fill Out the Following:

- Do you want a hand, wind mill or engine driven outfit?.....
- How far is it from ground level to water in well?.....
- How far from well or cistern will you want pump to stand?.....
- Do you want pneumatic water tank to stand vertically or lie horizontally?.....
- Do you prefer Elevated Tank, in attic or outside?.....
- How far away from pump will you want the tank?.....
- About how many gallons of water do you use per day?.....
- Do you want us to arrange a system for both hard and soft water by using two tanks?.....

Montgomery Ward Co.
Satisfaction Guaranteed or Your Money Back

Kansas City

Fort Worth

Portland, Ore.

Please Sketch Plan of Each

Draw Full Floor Plans of Each Floor

Give us a full floor plan of each floor so that we can tell relative position of bath room and kitchen, laundry in basement, etc. Then we can determine amount of pipe, etc., required. Indicate on basement plan by a line or an arrow, in which direction the sewer or cess pool lies; also location of source of water supply; so that we can tell about where pipes will have to enter and leave building.

Show Location

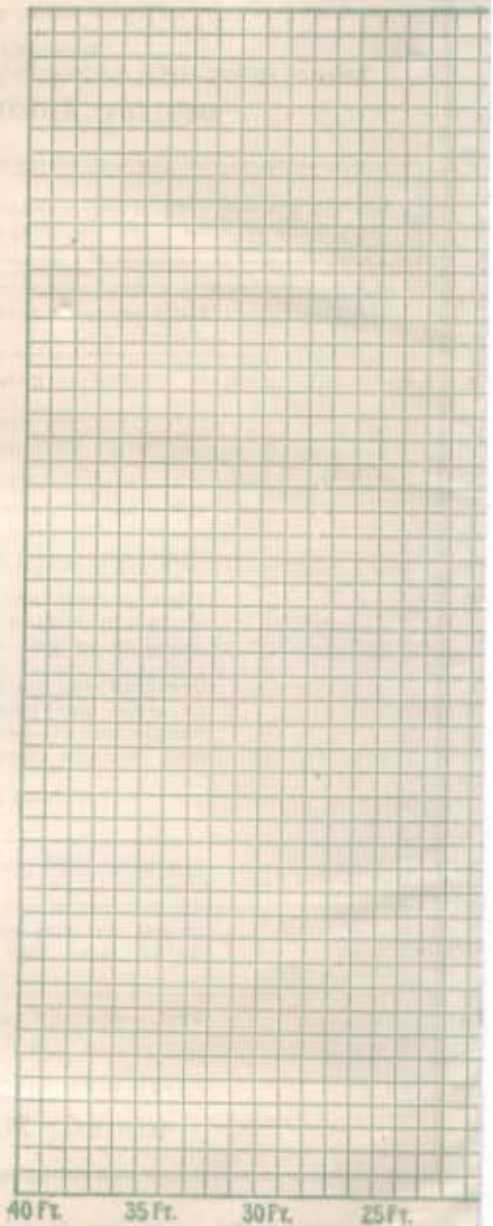
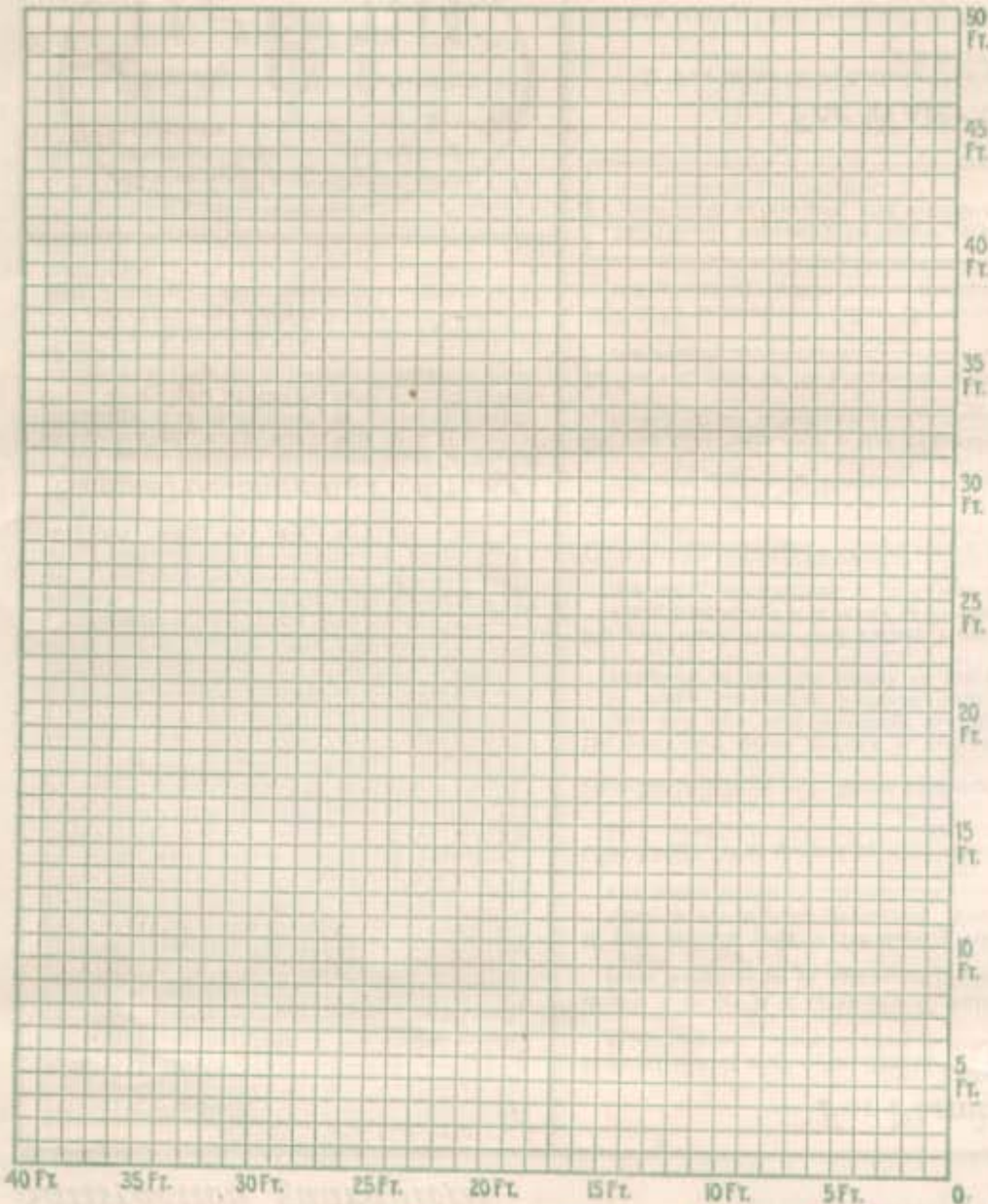
After you have drawn an outline of each ferent rooms, etc., mark carefully in the ba In kitchen show where the kitchen range, range boiler, etc. In basement show laundr can then make an intelligent estimate of t job.

BASEMENT—Give Height _____ Ft. _____ In.

FIRST FLOOR—Give H _____

Mark on This Plan Where Basement Fixtures Are to be Located

Mark on This Plan Where First Floor Fixtures Are to be Located
(See Other Side)



Every Plumbing System We Sell is Backed by

City Ordinances

When designing your system we do not take into consideration any special city ordinances unless the restrictions in your locality are such that plumbing ordinances must be followed. If this be the case, get a copy of same from your local authorities, and send to us with this blank so we can plan accordingly.

Montgomery
Satisfaction Guaranteed

CHICAGO

KANSAS CITY

ch Floor in Squares Below

of Each Fixture

floor showing dividing partition between the dif-
th room just where each fixture will be located.
will stand, where you wish kitchen sink placed,
r tubs, pneumatic water supply system, etc. We
se amount of pipe and fittings required for your

Regarding Location of Fixtures

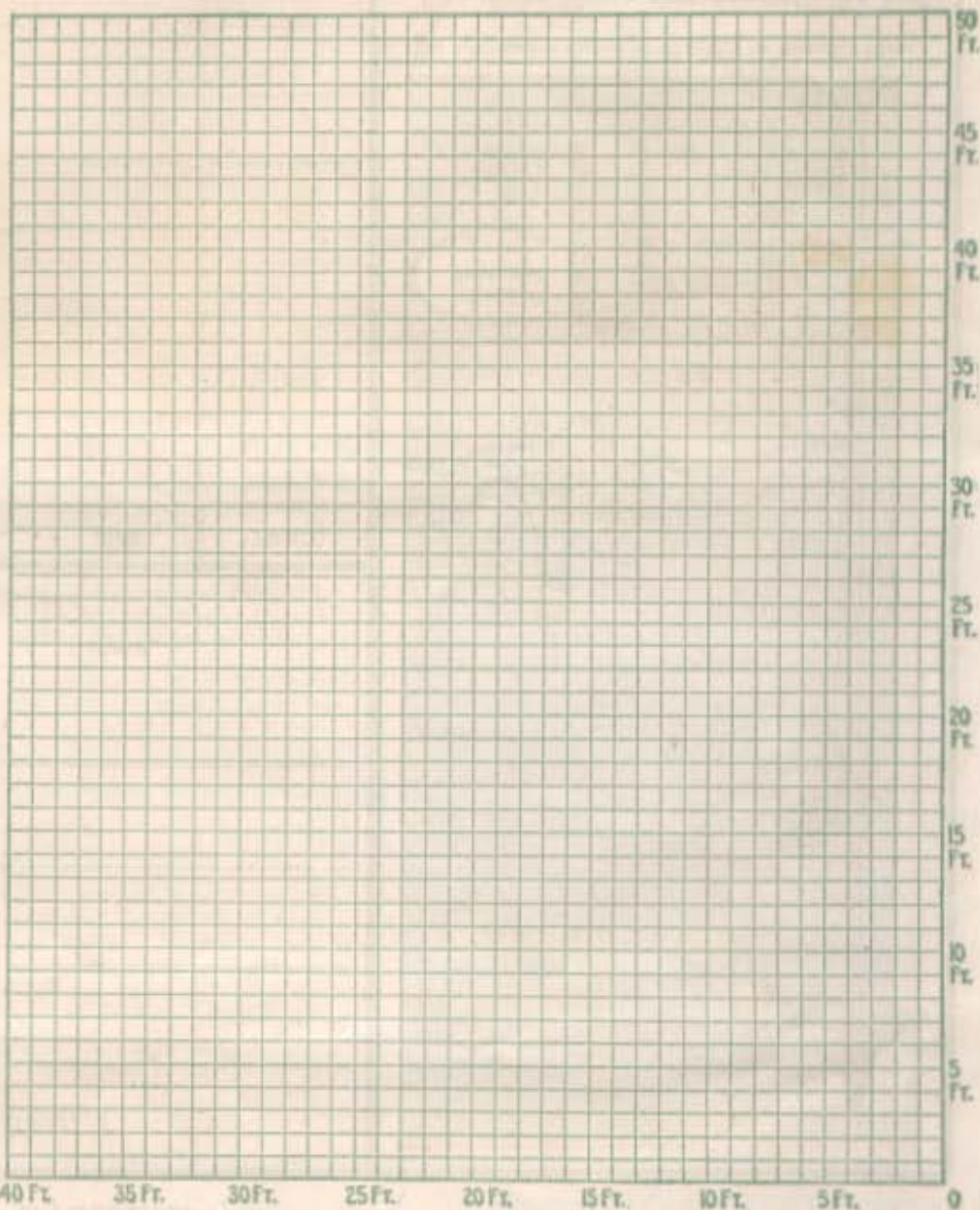
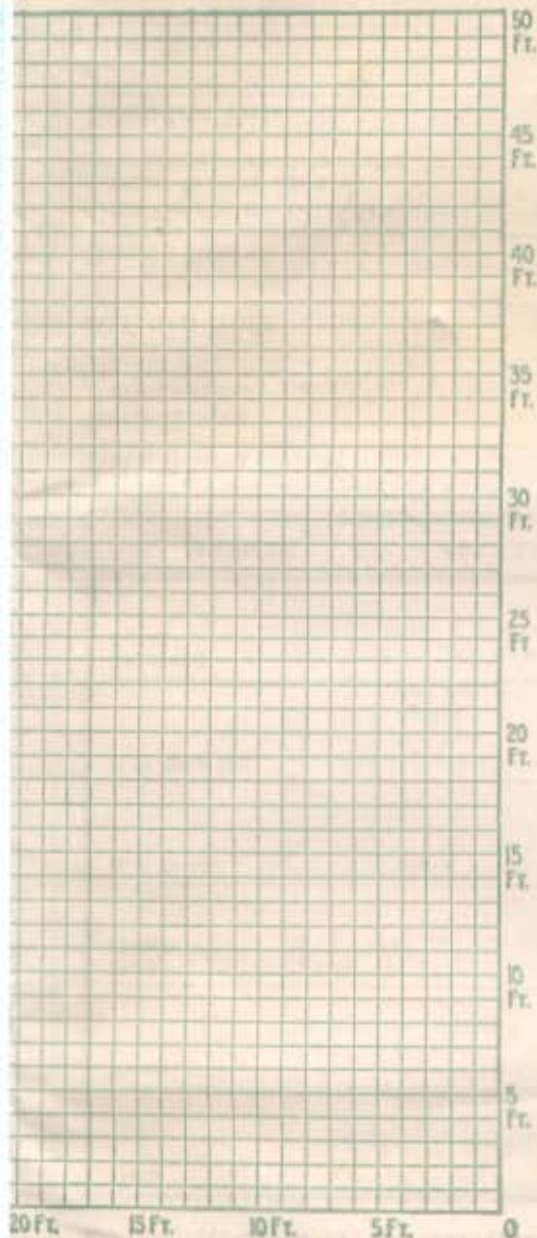
When arranging or locating the different fixtures, remember that the soil pipe stack should
be located directly behind closet outfit to get best results. Try to place sink on first floor,
and laundry tubs in basement, as closely in line with the bath room on second floor as possible.
This will cut down amount of pipe required, and reduce the cost. If in doubt, mark where
you prefer them. If requested, our engineers will be glad to offer suggestions.

Height _____ Ft. _____ In.

SECOND FLOOR—Give Height _____ Ft. _____ In.

First Floor Fixtures Are to be Located
(See Sample Plan)

Mark on This Plan Where Second Floor Fixtures Are to be Located



Our Strong Guarantee of Absolute Satisfaction

Very Ward Co.
Need or Your Money Back

FORT WORTH

PORTLAND, ORE.

Plans and Instructions Free

Our engineering department furnishes with each complete plumbing system a set
of detailed plans and instructions—easy to follow. These clearly illustrate and
describe the installation of the outfit, making it a simple matter for any ordinary
man to put in a first class job of plumbing.