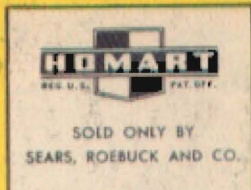


YOU NAME IT...



PLUMBING and HEATING DEPARTMENT

HAS IT!

Save on *All* your MODERNIZATION
and REPAIR Needs in this *One-Stop*
Value Center for Home Owners!

Whether it's a luxurious new bath ensemble in lovely color . . . a new custom-styled kitchen ensemble . . . or a new air-conditioning furnace . . . you'll find the kind of EQUIPMENT you want at the kind of a PRICE you'll want to pay—AT SEARS! Check up NOW on all your plumbing and heating needs and replace faulty and out-dated equipment at Sears money-saving low prices!

**NO MONEY DOWN —
UP TO 3 YEARS
TO PAY ON FHA PLAN!**

Modernize your home now on convenient FHA terms. We will gladly assist in arranging FHA loans of \$100 or more. Use Sears Easy Payment Plan on purchases of \$20 or more. Only 10% down!

**FREE ENGINEERING
AND ESTIMATING
SERVICE!**

Let Sears trained estimators help you select the right materials for your needs. Get a "package" price on the whole job! This extra Sears service doesn't cost you one penny more!

**EXPERT INSTALLATION
SERVICE ON ALL
MAJOR ITEMS!**

You select the equipment you want—we will gladly arrange with qualified installers to do the work. One price for labor AND materials . . . and all work is guaranteed to be entirely satisfactory!



TELEPHONE

1650

FOR FREE ESTIMATES

HEATING EQUIPMENT

- Gas, oil and coal-fired complete heating systems
- Gas, oil and coal-fired air-conditioning furnaces
- Gas, oil and coal-fired gravity warm air furnaces
- Gas, oil and coal-fired hot water, steam boilers
- Gas and oil-fired conversion burners
- Gas and oil-fired floor furnaces
- Furnace blowers
- Gas-fired wall heaters
- Convector radiation
- Complete line of automatic controls, filters and heating accessories

WELL EQUIPMENT

- Shallow well piston and jet pumps
- Deep well piston and jet pumps
- Centrifugal pumps
- Pump accessories
- Well equipment and repair parts
- Celler drainers
- Hand pumps

WATER HEATER EQUIPMENT

- Gas, oil and electric automatic water heaters
- Galvanized tanks and side arm heaters

BATHROOM EQUIPMENT

- Complete Bath Ensembles in white or in colors with steel or cast iron tubs
- Separate bath fixtures, fittings, accessories
- Shower stalls, curtains
- Metal wall tile

KITCHEN EQUIPMENT

- Complete kitchen ensembles in steel or wood
- Cabinet sinks in choice of steel or wood
- Flat rim sinks
- Individual base, wall cabinets in steel or wood
- Sink fittings and accessories
- Automatic dishwashers
- Food waste disposers
- Plastic counter tops

ALSO

- Steel pipe, soil pipe, copper tubing and fittings
- Brass valves
- Chemical toilets and septic tanks
- Laundry tubs
- Water softeners
- Window fans, attic fans and kitchen ventilators

"Satisfaction guaranteed or your money back" **SEARS**

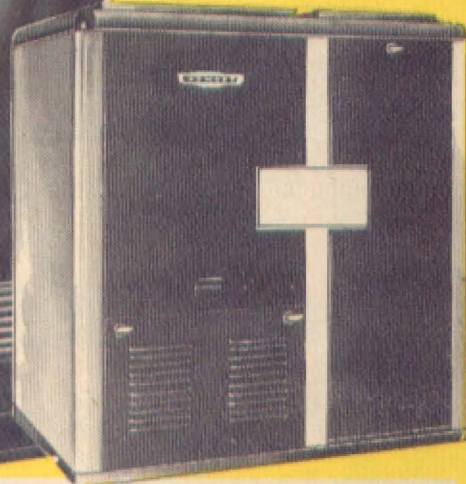
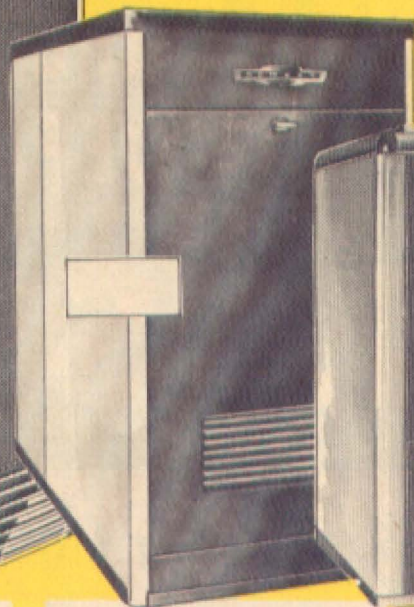
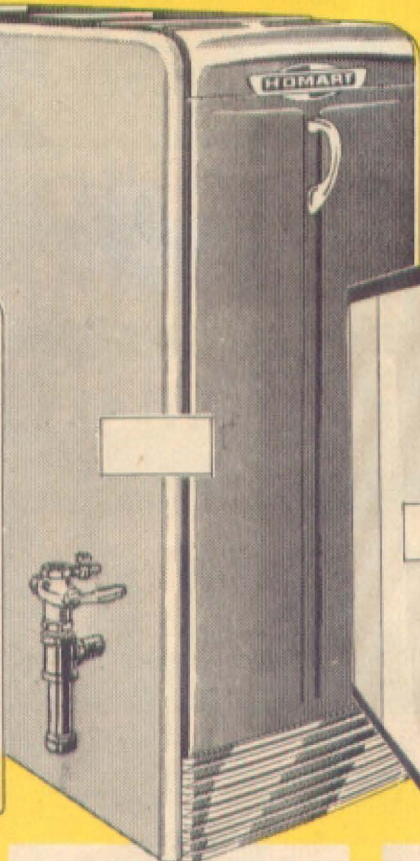
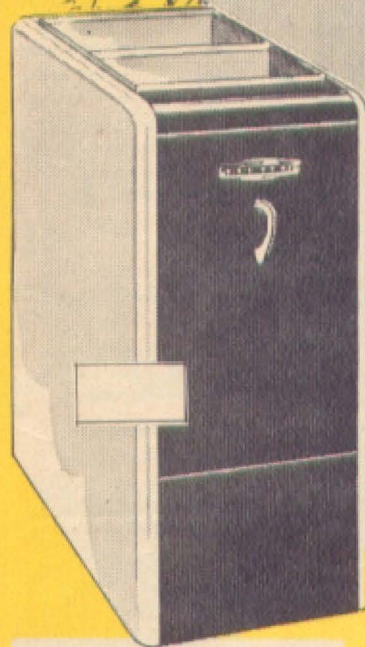
400 S. Central Avenue
MARSHFIELD, WISCONSIN



They're A.G.A. Approved! Combustion Chambers Guaranteed 10 Years!

Homart Gas Fired WINTER AIR CONDITIONING BASEMENT TYPE FURNACES

- Include Burner, Blower, Filters, Automatic Controls and Draft-Diverter
- Handsome Two-tone Cabinets
- For Natural, Manufactured or L.P. (Bottled) Gas



100,000 BTU Input!

Burgundy and beige baked enamel finish. Also available in complete outfit including standard thermostat, humidifier, limit control.

Choice of 3 Sizes!

100,000-140,000 or 200,000 BTU input ratings. Entirely automatic! Quiet blower circulates air—filters keep it clean! Guaranteed!

For Natural Gas!

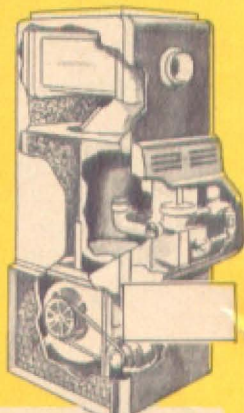
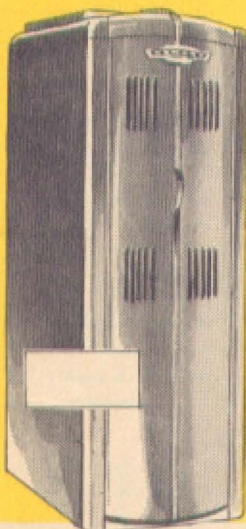
Compact design basement furnace in 80,000-100,000-120,000 or 140,000 BTU input ratings. Enjoy winter-long comfort at a turn of a dial.

Choice of 5 Sizes!

80,000 - 100,000 - 120,000-140,000 or 160,000 BTU input capacities! For natural gas. Approved by A.G.A. Includes filters, all controls.

Gas Fired Winter Air-Conditioning CLOSET TYPE FURNACES

for Natural or
L. P. (Bottled) Gas



Designed For Natural Gas

Can be used as air circulator in summer. In 85,000—100,000 BTU input sizes.

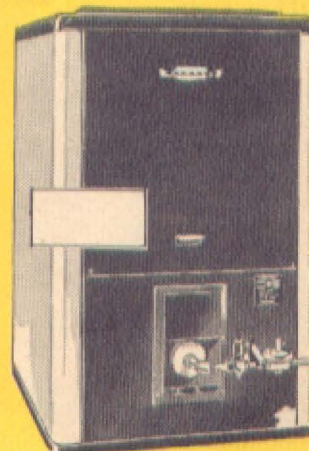
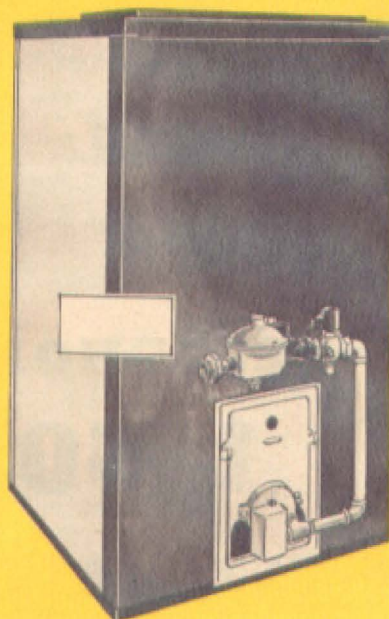
All Types of Gas!

100,000 BTU input rating for natural, manufactured or L.P. (Bottled) gas!

Gas Fired Gravity-Type Furnaces

10-Year Guaranteed Combustion Chamber!

Completely automatic! Space saving unit available in 90,000 or 120,000 BTU input capacities. For natural gas. A.G.A. approved.



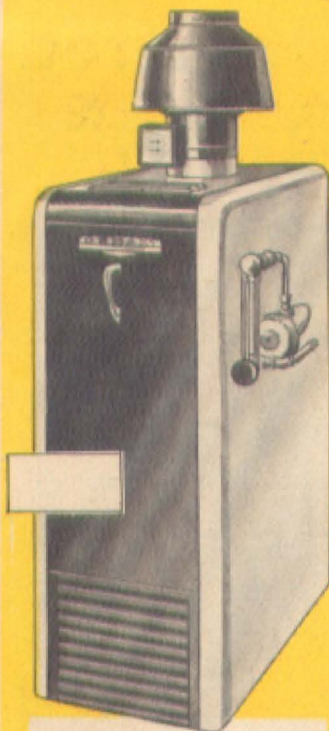
Designed for Low Ceilings!

Some features as furnace described above. Available in 65,000 - 95,000 - 120,000 or 140,000 BTU input capacities. For natural gas.

GET SEARS FREE ESTIMATE ON A COMPLETELY INSTALLED GAS-FIRED SYSTEM! NO OBLIGATION TO YOU!

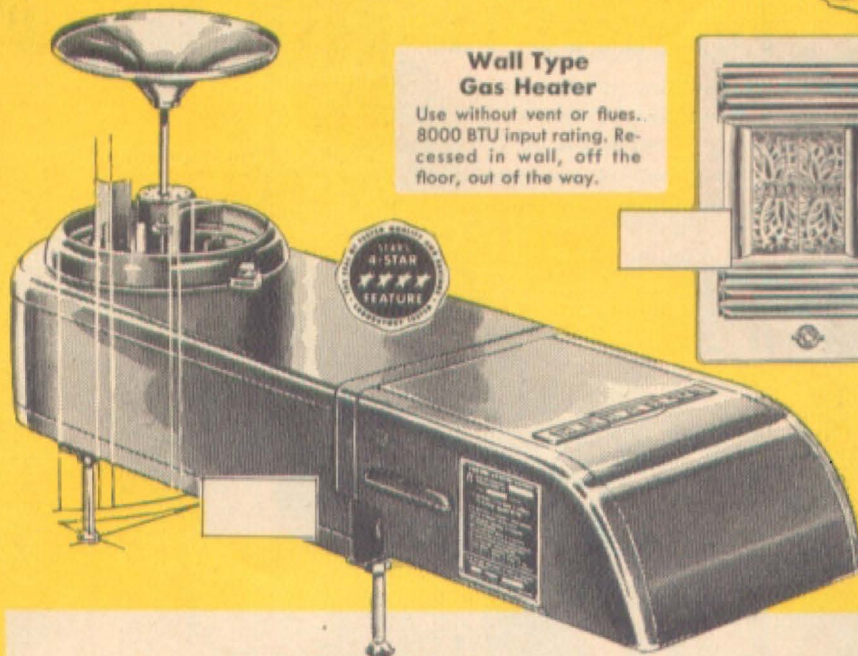
It's Sears for **HOMART** Automatic Gas Heating at Low, Low Prices!

Install Yours NOW!



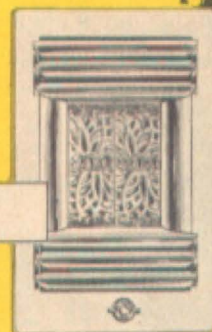
Homart Gas Hot Water or Steam Boiler

Burgundy and beige cabinet. Safety pilot control. Gas pressure regulator. For natural, manufactured or L.P. (Bottled) gas. 5-6-7-8-10 section sizes supply from 375 to 805 sq. ft. of net standing radiation (hot water) and 200 to 440 on steam.



Wall Type Gas Heater

Use without vent or flues. 8000 BTU input rating. Recessed in wall, off the floor, out of the way.



Gas Fired Wall Heater

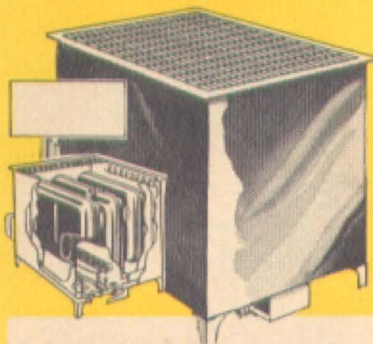
For natural or L.P. (Bottled) gas. 25,000 or 45,000 BTU input capacities. Combustion chamber guaranteed 10 years.

HOMART 4-Star Feature Gas Conversion Burners

Completely automatic! Start it in the fall, shut it off in the spring! Equipped with dependable controls; A.G.A. approved. Completely assembled—ready for installation in most furnaces or boilers. For use with natural or manufactured gas. Safety pilot. Compact cabinet. Few moving parts. Get Sears low price now on a complete installation!

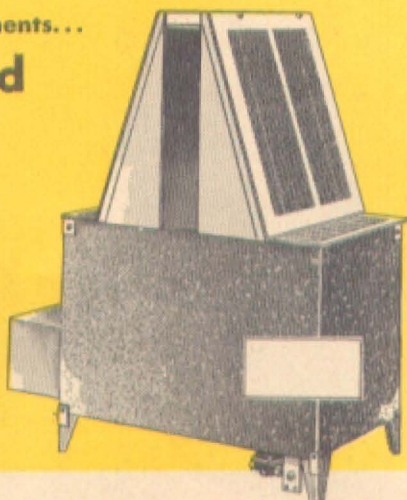
For homes with or without basements...

Homart Gas Fired Floor Furnaces



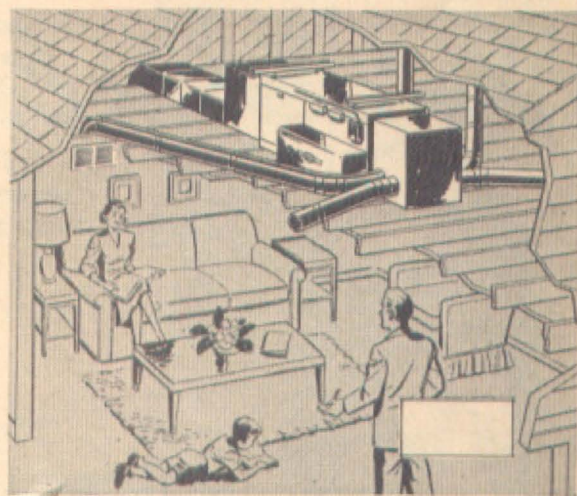
Floor Furnace with Conventional Type Registers and Choice of Controls

Combustion chamber guaranteed 10 years! 25,000-40,000-50,000 or 70,000 BTU input models for natural or bottled gas. Manual or automatic controls. No pit required.



Floor Furnace with Dual Wall Type Registers and Built-in Dampers

Designed for installation in walls between two rooms for efficient heating in both! 30,000 - 40,000 or 50,000 BTU input ratings. For natural gas. Choice of controls.



Gas Fired Horizontal Type Attic Furnace in 60,000 - 80,000 - 100,000 BTU Models

The perfect answer to the demand for low cost, easy to install completely automatic gas heat! Compact, highly efficient, requires minimum attention. Also ideal for basement or utility room installations. Completely assembled... with controls. Save!

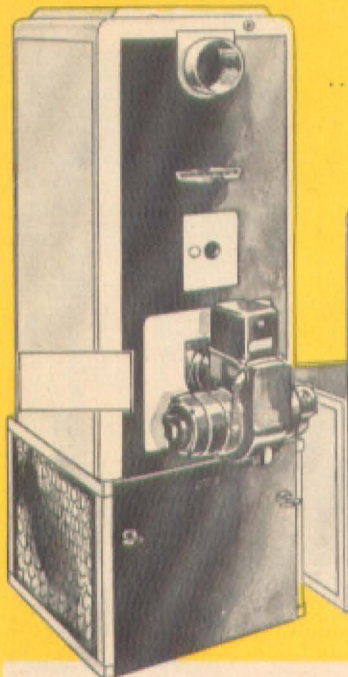
NO MONEY DOWN—UP TO 3 YEARS TO PAY—ON F.H.A. PLAN! INVESTIGATE TODAY!



When it's **HOMART** You're Sure of Tops in Value and Efficient Performance in

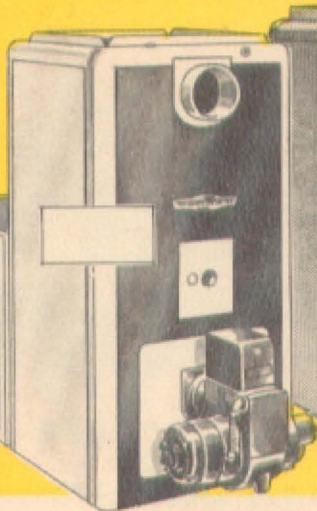
Oil Fired Winter Air Conditioning Furnaces for Basements, Utility Rooms

Homart Oil Fired Winter Air Conditioning Furnace filters, heat and circulate the air . . . are completely automatic in operation . . . can be readily converted to gas at any time! Attractive burgundy and beige enameled cabinets. Approved by leading testing laboratories.



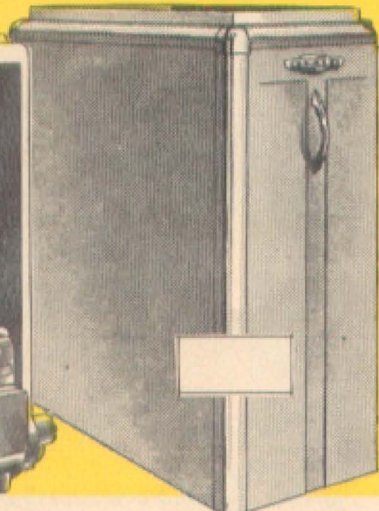
Homart Oil Fired Furnace For Utility Rooms

Winter air conditioning type with blower built in base. 75,000 BTU input capacity. All controls included along with barometric draft regulator. Tested and approved.



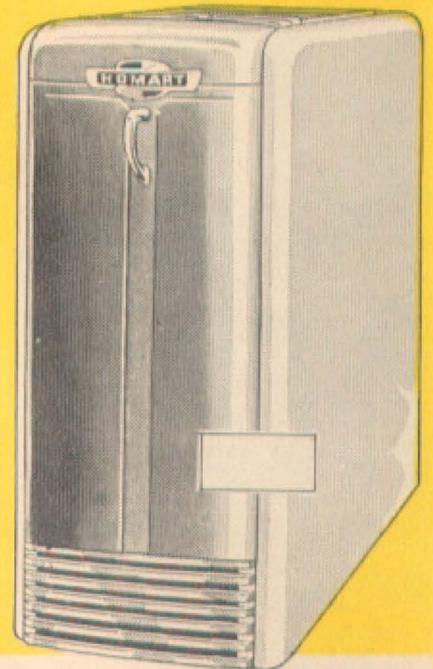
Homart Oil Fired Furnace For Basements

Compact flexible outfit designed for small homes. Includes same 75,000 BTU input furnace as shown at left with adapter boot package. Complete with all automatic controls.



Homart Oil Fired Furnace With All Controls

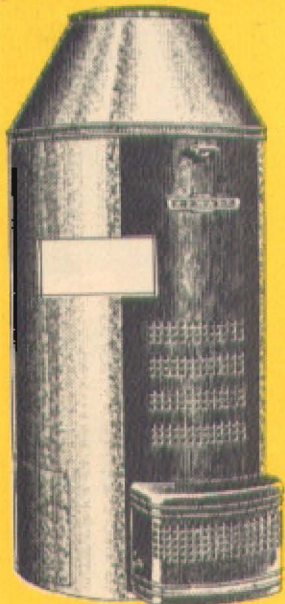
Choice of 85,000, 100,000 or 125,000 BTU output with pressure type burners. Quiet blower circulates, filters air. Completely automatic. Two-tone cabinet. Save!



Homart Oil Fired Furnace Convertible to Gas

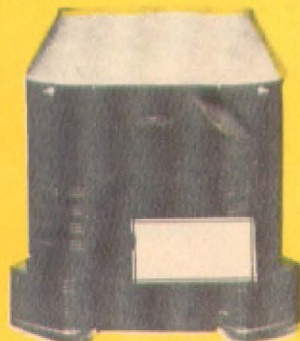
Yes—this best selling Homart oil fired air conditioning furnace can be converted to gas at any time! Choice of 80,000 to 165,000 BTU output ratings. Completely automatic!

Installed by Experts!



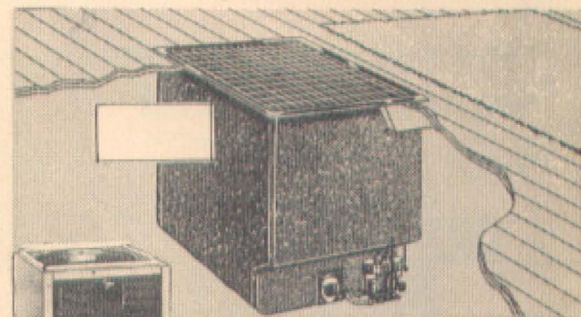
Homart Oil-Fired Gravity-Type Warm Air Furnace

New, improved vaporizing pot type burner. 72,000 BTU output. Latest fuel-saving type pilot. UL approved. Automatic thermostat permits close control of room temperature.



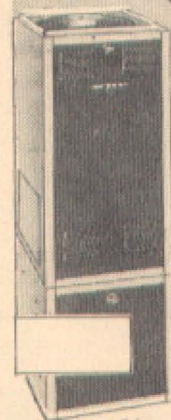
Dual Pot Type Oil Fired Furnaces

Use either one or two burners, depending on weather! Automatic thermostat regulates flow of oil. Built-in limit control.



Fully Automatic Homart Oil-Fired Gas Floor Furnace

Enjoy low cost, clean, fully automatic heating NOW! No more cold floors. A blower type furnace with oil vaporizing pot. Approved by Underwriters Lab., Inc.



Homart Oil-Fired Furnace

Compact, flexible; for homes with or without basements. 72,500 BTU capacity. Choice of basement or closet type installation. With limit control and draft regulator.

CONSULT OUR TRAINED ENGINEERING DEPARTMENT FOR A COMPLETE INSTALLATION ESTIMATE!

Now's the
time to

Install

a New Homart Pressure Type!
Conversion Oil Burner!

**Homart
Conversion
Oil Burner**

Heavy duty 1/4 H.P.
motor. 245,000
heat unit output.
High frequency
head. 15- or 20-in.
blast tubes.

Designed to convert any type of furnace or boiler
to a modern automatic system! Reduce housework,
add convenience and greater comfort to your home.
Approved by Underwriter's Laboratories.

**Budget Priced Homart
CONVERSION
OIL BURNER**

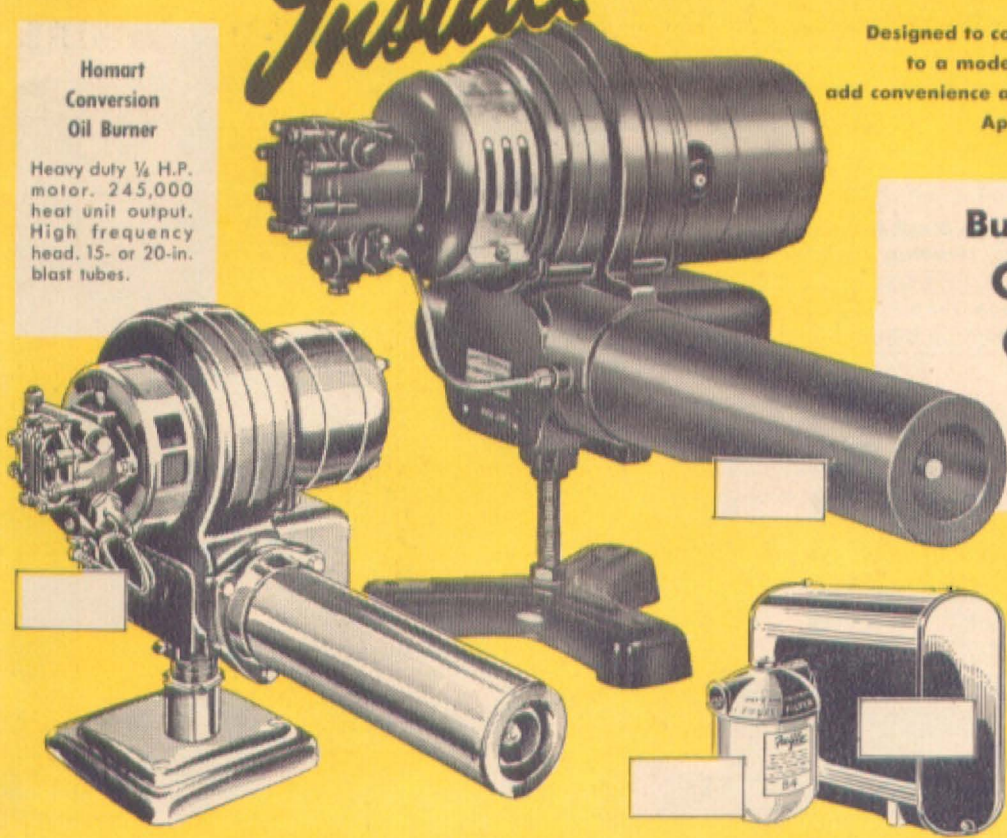
Easily installed in a few hours' time! 8-
to 20-in. blast tubes fit most furnaces
and boilers; 1.00 to 6.00 gph. 1/8th
H.P. 110 volt 60 cycle AC motor. Over-
load protection.

**Vertical Obround
Basement Fuel Tank**

275-gallon capacity. 14-gauge steel. UL
approved. Sears carries a complete line
of fuel line supplies.

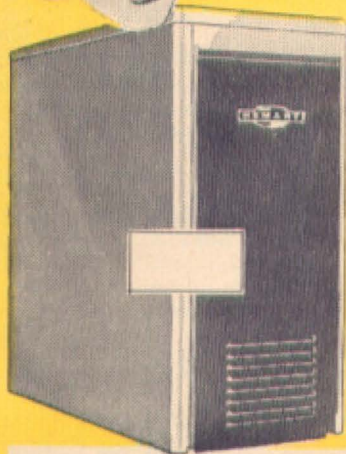
Fulflo Oil Filters

Protect your pressure type oil burner! Elim-
inate clogged nozzles. Cut down service
costs. Complete.



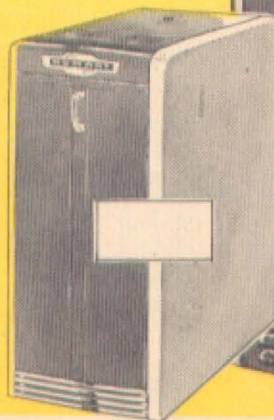
If you're looking for economical operation . . . top efficiency . . . see these **HOMART**

**OIL FIRED
BOILERS**



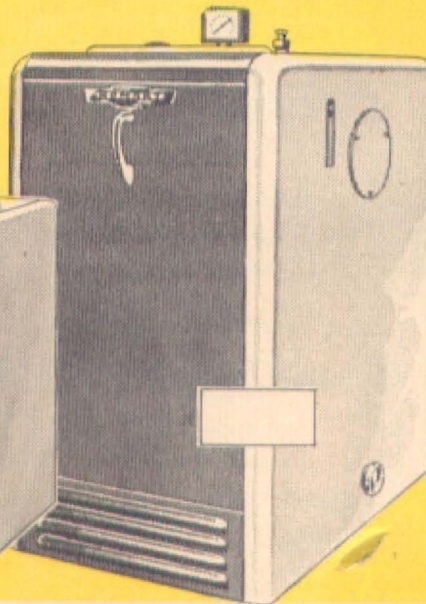
**Homart Steel Boiler Is
Compact, Space Saving!**

Offers 370 to 1300 sq. ft. of net stand-
ing radiation capacity for steam; 510
to 2080 for hot water. Ample supply
of hot water for domestic use.



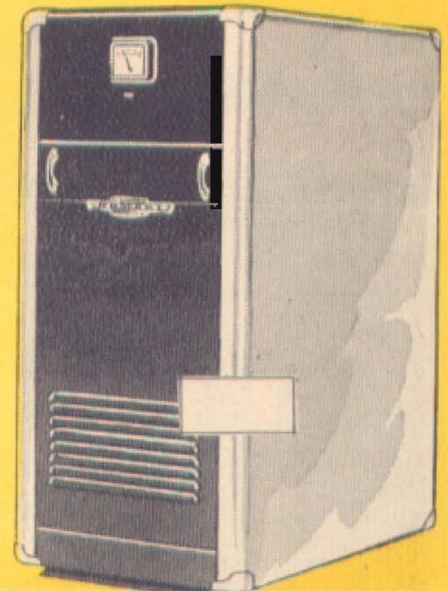
**Homart Steel Boiler for
Gravity or Forced Heat!**

Gives 640 or 935 sq. ft. of net stand-
ing radiation capacity for hot water;
400 or 585 for steam. A.S.M.E. ap-
proved. Convertible to gas.



**Homart Steel Boiler with
93,000 BTU Output!**

400 sq. ft. rating for hot water; 250
for steam. No special foundation re-
quired. All controls readily accessible.
Check this value now.



**Homart Boiler Features
Cast Iron Construction**

Homart 15-inch oil fired boiler for
gravity or forced hot water or steam
systems. Completely enclosed in two-
tone cabinet. 4-5-6-7-8 section sizes
available.

LET SEARS EXPERT INSTALLERS EQUIP YOUR HOME WITH AUTOMATIC OIL HEATING NOW! EASY TERMS!

Permanently gas and smoke-tight! For hand or automatic firing! **HOMART**

15 YEAR *Guaranteed* STEEL FURNACES

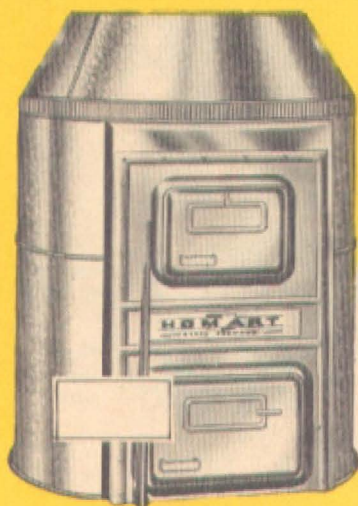


Homart Pipeless Steel Furnace

Sturdy truss type floor register. 20-22-24-inch sizes for 4- to 8-room homes. For hand firing only.

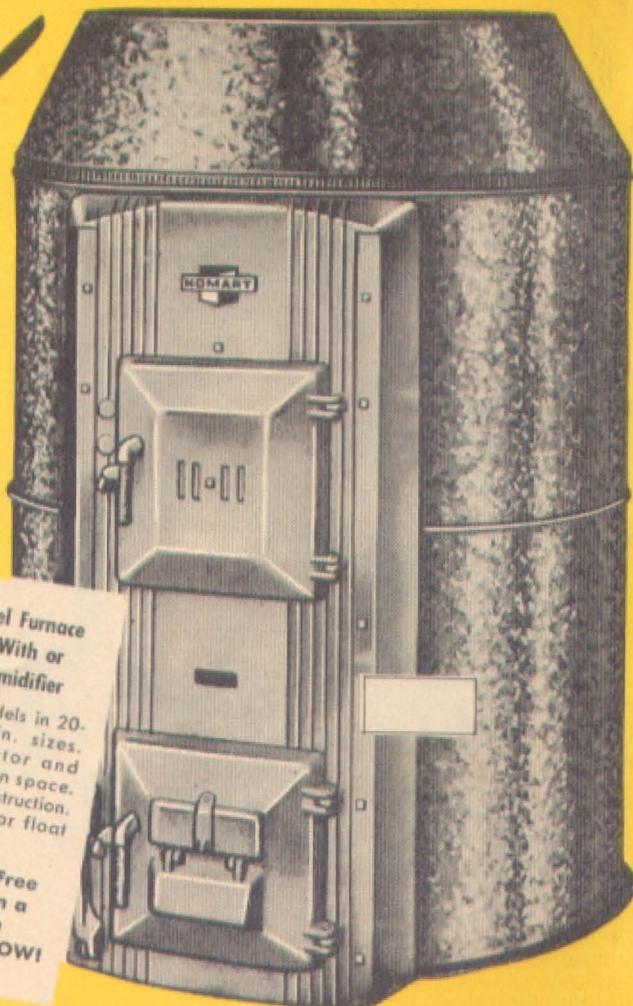
Homart Steel Furnace for Lasting Heating Satisfaction!

Extra large combustion chamber ideal for stoker or conversion burner. Fire-brick liner. Waist-high shake damper. Two-agitating grates. For hard or soft coal or coke. 20-22-24-27-in. sizes. Shown at right.

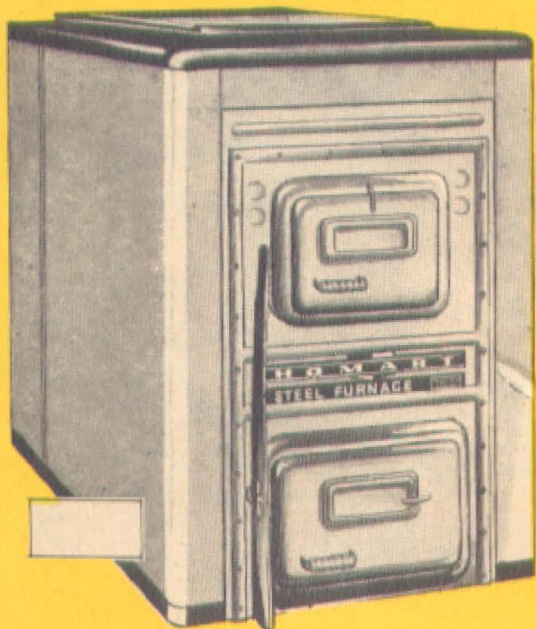


Homart Steel Furnace Available With or Without Humidifier
Hand firing models in 20-22-24-27-30-in. sizes. Massive radiator and large combustion space. Welded steel construction. With automatic or float type humidifier.

Get Sears Free Estimate on a Complete Installation NOW!



Another Sears Exclusive!



Homart Winter Air Conditioning Steel Furnace

- Efficient forced air heating
- Positive circulation
- Quiet blower unit
- Proper humidity
- Positive filtering
- Filters included

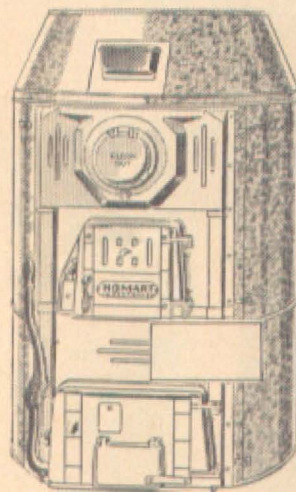
Enjoy air that is clean, invigorating, evenly distributed and of uniform temperature and humidity. Combines long-life steel furnace construction with modified air conditioning. 20-22-24-27-inch sizes available. Guaranteed 15 years!

Guaranteed 20 Years!

Sears Exclusive INDESTRUCTO Furnaces featuring

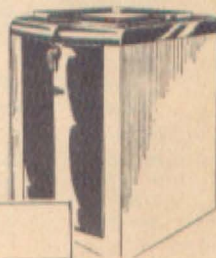
- One-piece heavy cast radiator
- One-piece combustion chamber
- Duplex grates; large ashpit
- Two-piece firepot

Why be satisfied with an ordinary cast iron furnace when Sears INDESTRUCTO metal construction resists heat so much better! Get the full story from our heating representative before you buy. Available in 18-20-22- and 24-inch sizes.



Homart Furnace Blower for Warm Air Systems

Enjoy forced warm air heating at minimum cost! Filters out up to 92% of the dust, dirt and pollen. For furnaces 20- to 27-inch firepot diameters.



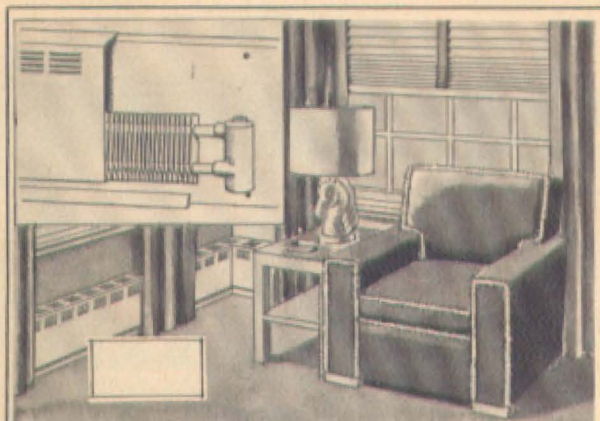
INSTALL A NEW COAL-FIRED SYSTEM NOW! NO MONEY DOWN! UP TO 3 YEARS TO PAY ON FHA!



Don't put up with a 'sick' boiler... get our low price on a

Completely Installed

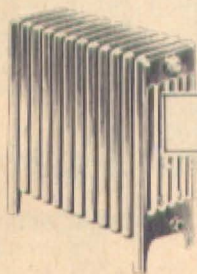
HOMART HOT WATER OR STEAM BOILER NOW!



NEW! Perfect heating with no loss of floor space!

Convector Baseboard Radiant Heating

Does away with space-wasting old-style radiators! Minimizes air temperature differences... improves humidity... reduces necessity of cleaning frequently. For automatic forced hot water systems. Easily installed in both new or old homes. Can be painted to harmonize with any color scheme.



Homart Midget Radiation For Hot Water or Steam

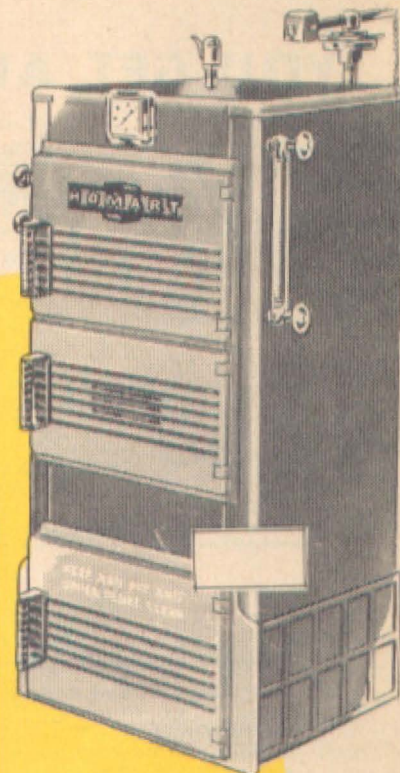
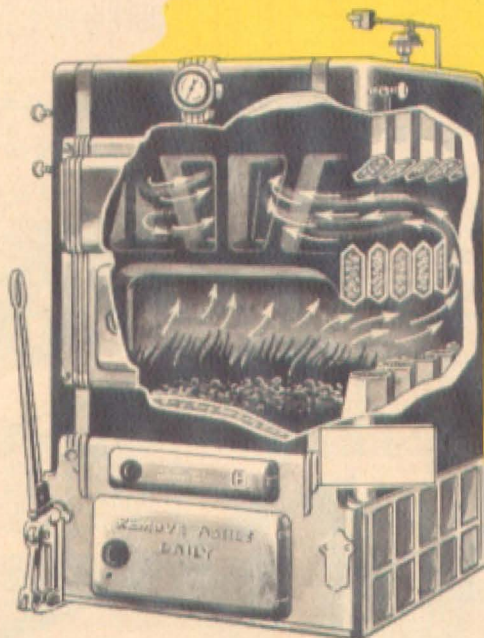
- Slender; Conserve Space
- Full Capacity Radiation
- Wide Variety of Sizes

Specially designed to save space. Styled like standard radiators and made of cast iron. Available in lengths to 46 sections; assembled in even number of sections only.

Homart 17-Inch Boilers For Hand or Automatic Firing

- Ratings approved by The Institute of Boiler and Radiator manufacturers
- Large combustion chamber and long flue travel... adaptable to oil, gas or stoker firing
- Gauge and Check and Automatic Draft Regulator included

Available in 5-6-7-9 section sizes. Built of durable cast iron—ground to a smooth close fitting finish. Roomy firebox; large ashpit. Jacket finished in baked maroon enamel.

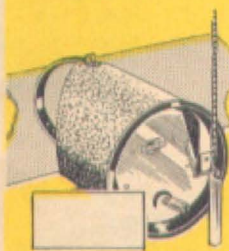


Homart Cast Iron Sectional 25-Inch Boilers

- Available for steam or hot water
- 5, 6, 7 or 8 section sizes

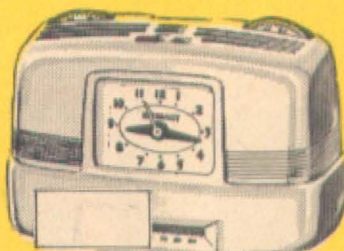
Combine all desirable features to give you a top quality heating plant that will serve you many years! Advanced design assures highest efficiency with utmost economy of operation. Streamlined jacket. With gauge and damper regulator.

Make Sears Your Headquarters for All Heating Accessories! Save Real Money, Too!



Check and Automatic Draft Regulator

Reduces heat loss and fuel cost by maintaining proper draft control. Responds quickly to temperature changes. Permits free smoke passage.



Day and Night Damper Regulator

Set it and forget it! Regulates damper control 24 hours a day. Includes clock thermostat, damper regulator and all necessary accessories.



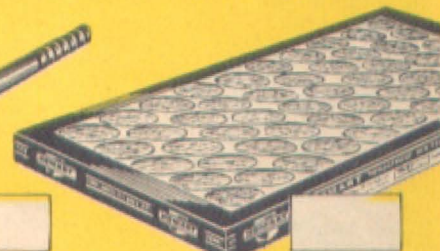
Damper Regulator and Thermostat

Maintains desired temperature automatically. Includes motor, chain, cable and pulleys. Install now to any gas, oil or coal fired systems.



Combination Warm Air Control

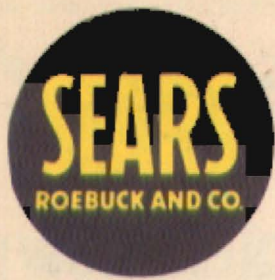
With summer switch and fixed differential. Adjustable temperature settings have lock type knobs. Wiring diagram furnished. Save now at Sears.



Homart Air Filters with Dust Adhesive

Sears Homart filters are the ONLY filters with dust-catching adhesive! 1 or 2-inch thicknesses; 16x20 to 20x25-inch sizes. Real value!

SOLVE ALL YOUR HEATING PROBLEMS AT SEARS! NO ITEM TOO SMALL! NO INSTALLATION TOO BIG!

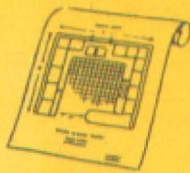


Sears Can Make Your *Dream* Will You Let Us Build It

YOU GET ALL THIS FREE!



The services of expert kitchen consultants.



A floor plan of your kitchen drawn to scale.



A "one-package" contract with all specifications.



Installation arranged and financed if you wish.



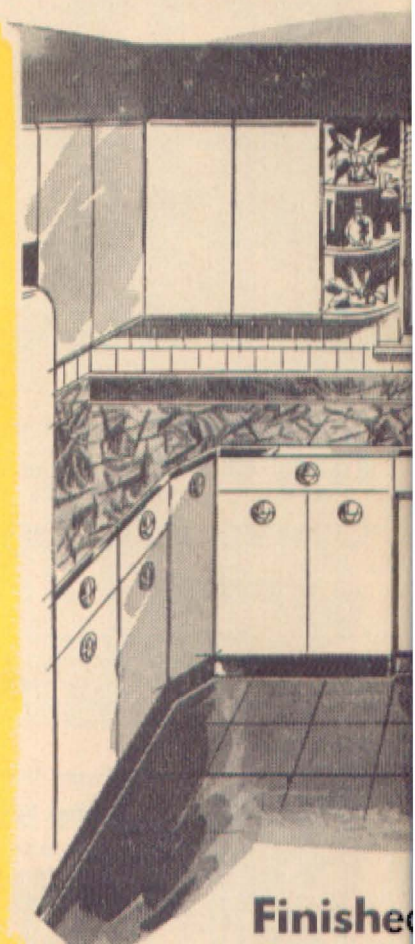
An artist's sketch in color of your kitchen.



Up to three years to pay on low monthly payments.



- Sinks, wall and base cabinets
- Dishwashers
- Food waste disposers
- Gas and electric appliances
- Floor covering
- Wall tile
- Wallpaper and paint
- Curtains and draperies
- Lighting fixtures
- Cooking utensils
- Dishes and cutlery



Finished

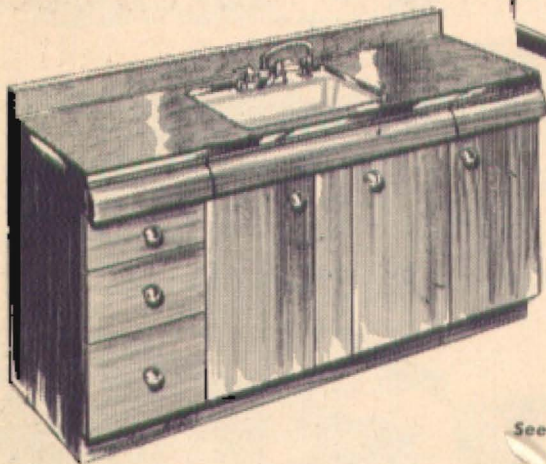
In white or Harmony House colors — Our Finest Wood Cabinet Sinks

Big, twin-basin sinks with all the fittings included. All the 'extra' features usually found only on 'custom built' models. Cast iron or steel basins. Plastic tops. 4-in. back splash-board. Choice of 66, 72, 84 or 96-in. widths.



Plastic work tops on these Natural Wood Cabinet Sinks

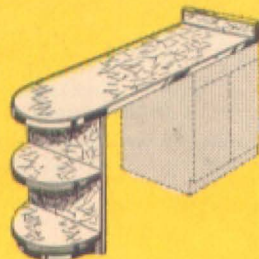
Choice of 66, 72 or 84-in. widths complete with durable plastic tops in wide variety of colors. Pressed steel twin basin sink. Complete with all fittings. Matches kitchen ensemble shown at right.



See next page for complete line of all-steel cabinet sinks

These handy units help you to Make Full Use of All Available Floor Space!

- Lazy Susan corner base unit with revolving shelves—in steel or wood
- 63-in. Steel High Utility Cabinets
- Plastic Counter Tops
- Breakfast Bar Units—in Steel
- Custom-Styled Dining Lounges
- Space-saver Folding Tables



NATURAL WOOD Ready to wax

A wide selection of kitchen—all styled chrome plated hardware

in Kitchen Come True . . . JUST FOR YOU?



Your unending delight in your new-found freedom from the care and confusion of an old-fashioned kitchen will give you a new lift every day of your life. At Sears—and Sears alone—can you 'get it all'—from wall to wall, from floor to ceiling—everything to transform your kitchen into an efficient and beautiful food storing, cleaning and preparation center. Call or write today for a free estimate on a completely new kitchen or any one of the many low cost 'starting units'. No obligation to you.

Steel

Ensembles Featuring Continuous Plastic Tops

Completely Installed

No Money Down

Up to 3 Years to Pay
on F.H.A. Plan

• Individual steel base cabinets with continuous top

• Steel wall cabinets

• Gleaming white enamel finish

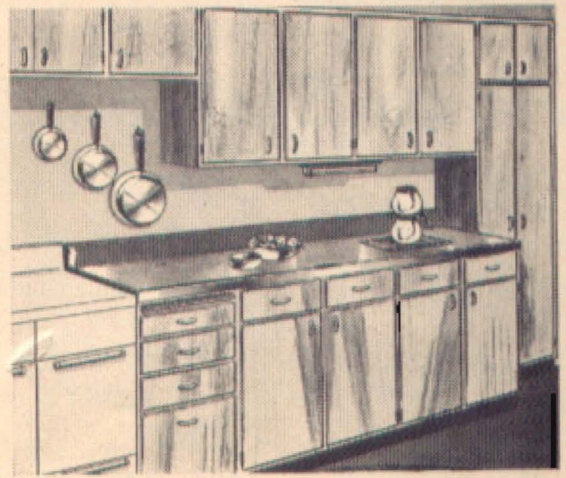
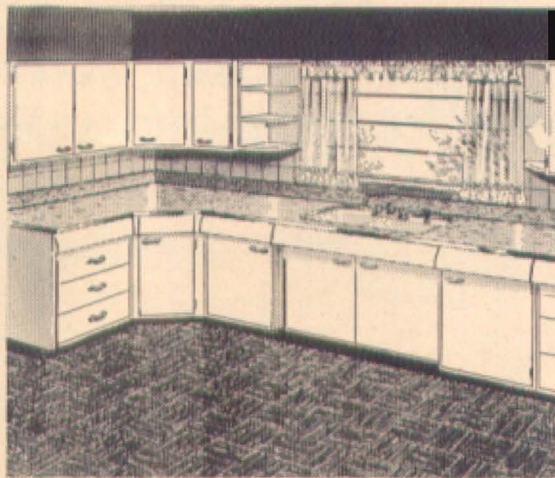
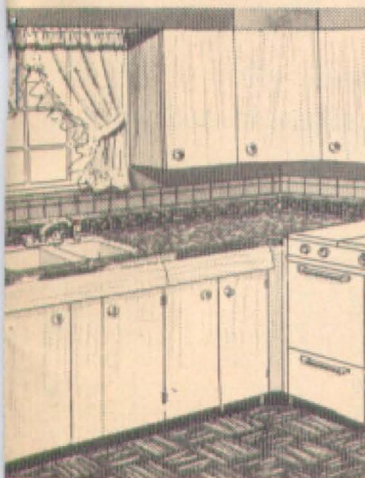
• Available in wide variety of "wall-space saving" arrangements

Why wait another minute when you can enjoy the kitchen of your dreams for no money down—low monthly payments and up to 3 years to pay! Designed FOR YOU for easy efficiency, up-to-the-times beauty! Call or write today for a free estimate—no obligation to you!

Wood

or Unfinished

Ensembles with Continuous Plastic or Linoleum Tops!



WOOD KITCHEN ENSEMBLE

varnish or enamel your favorite color

Choose Douglas Fir wall and base cabinets to fit your modern or modern living. Rounded drawer fronts, recessed toe bases, adjustable shelves.

OUR FINEST ENAMELED WOOD ENSEMBLE

In choice of white or 4 Harmony House colors

Choose matching wall and base cabinets in same color—or mix any of the harmoniously blending colors. Interiors painted to match outside color. Work surface tops in go-together colors, too!

LUXURIOUS ALL BIRCH CONSTRUCTION

For the finest wood kitchen ensemble of all!

We'll build this fine kitchen to fit your kitchen area exactly! Get premium quality features including 7-ply door fronts, concealed hinges, continuous work surfaces. Liberal terms arranged.

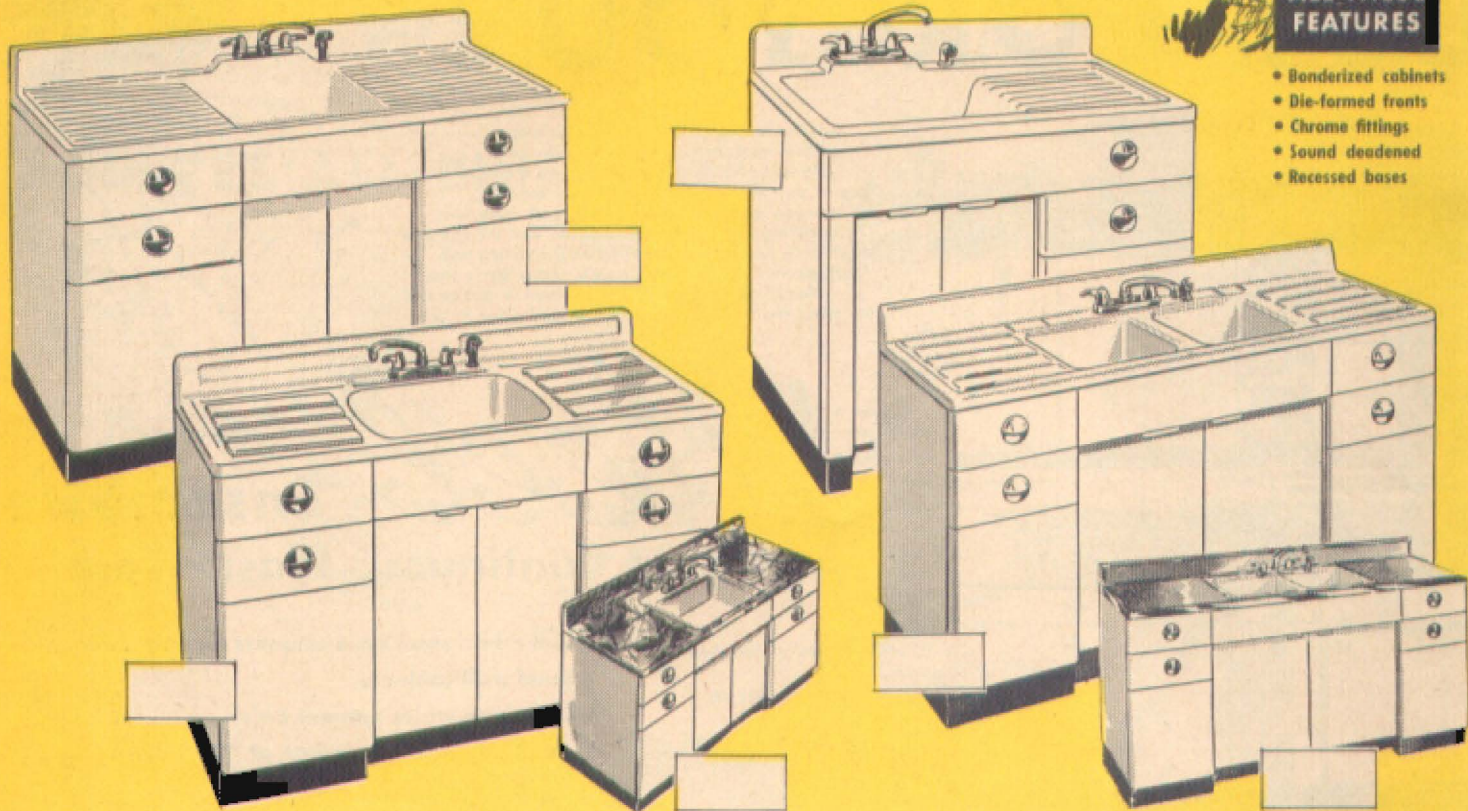
To bring you greater convenience and utmost beauty . . .

Homart Deluxe Cabinet Sinks



ALL THESE FEATURES

- Bonderized cabinets
- Die-formed fronts
- Chrome fittings
- Sound deadened
- Recessed bases



Choice of 5 widths! Heavy steel, cast iron or colorful plastic tops!

60-in. Cast Iron Sink with Superior Features

Heavy-gauge steel cabinet. Double drainboards with ledge back. Stainless steel basket type strainer and retractable rinsing spray.

54-in. Steel Sink to Make Work Easier!

The favorite of all 54-in. sinks! Deluxe features throughout including aerator, rinsing spray and basket strainer. Four drawers, 3 compartments.

54-in. Deluxe Sink — Colorful Plastic Top

Now! SIX luscious colors to choose from! Gleaming plastic top simply thrives on abuse. 4-drawer, 3 compartment deluxe cabinet with deluxe fittings.

42-in. Cast Iron Sink for Limited Space

A fine, fully equipped cast iron sink that gives you all the features of even our largest sinks. Fits under the average kitchen window. Super quality fittings.

66-in. Double Basin All Steel Beauty

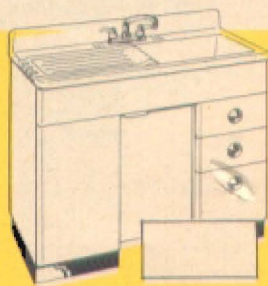
The ultimate in all-steel twin basin sinks! Aerator faucet, rinsing spray and large basket strainer. Twin drainboards. Also available as shown with plastic top.

Install a **HOMART** Cabinet Sink Now! Get Our Low Price on a Complete Installation!



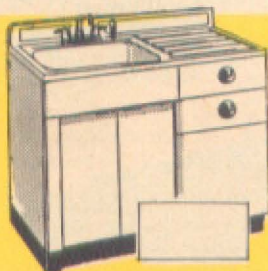
42-in. Cast Iron Sink at a Budget Price

With right or lefthand drainboards. Easy action drawer. 2-in. rear ledge. Black enameled recessed base. With fittings.



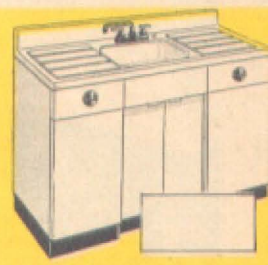
48-in. Cabinet Sink with Laundry Tub

This dual purpose unit saves time and effort! One basin 8-in. deep; the other 13-in., with removable steel drainboard. Save!



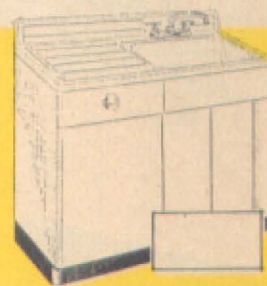
42-in. Deluxe Steel Sink with Spray

Heavy gauge steel with acid-resisting titanium white porcelain enamel. Right or lefthand drainboards. Complete with fittings.



54-in. Standard San Diego Model

An all-white beauty at low, low price! Two drawers. Flat top strainer, swing spout faucet. Heavy gauge steel cabinet.



42-in. Standard San Diego Sinks

Choice of right or lefthand drainboards. White porcelain over steel. Flat top strainer. One drawer. Install yours now!

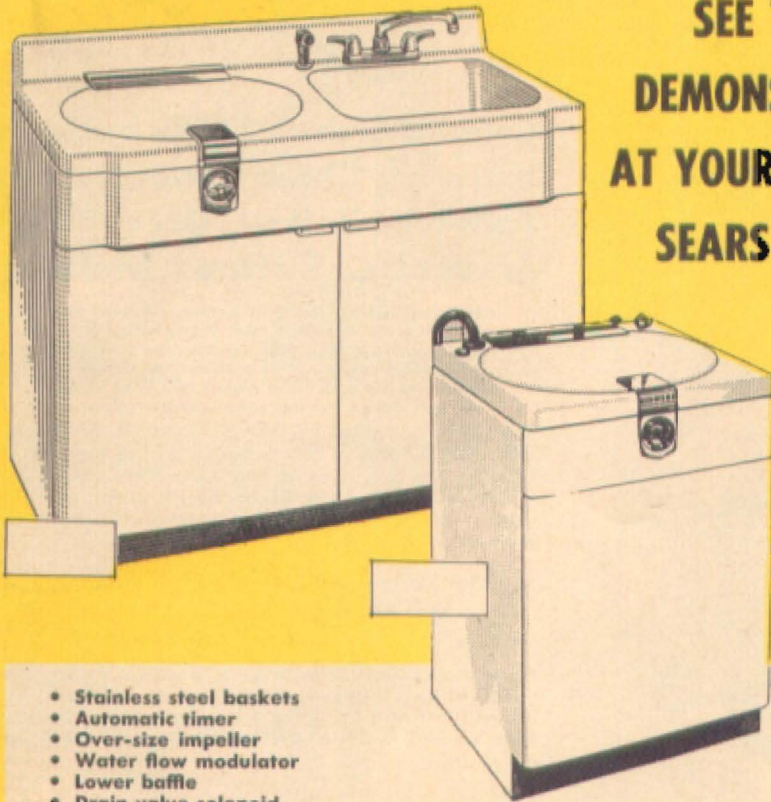
WHY WAIT? ENJOY YOUR NEW HOMART CABINET SINK NOW . . . USE SEARS EASY PAYMENT PLAN!

Dishes are no Work at all

When You Have These Kenmore and Homart Work Savers!



SEE THEM
DEMONSTRATED
AT YOUR NEAREST
SEARS STORE



- Stainless steel baskets
- Automatic timer
- Over-size impeller
- Water flow modulator
- Lower baffle
- Drain valve solenoid

Choice of 3 models in

New Kenmore Automatic Dishwashers

- 48-in. Cabinet Sink Model
-
- 24-in. Cabinet Model
-
- 24-in. Portable Model

Whether you choose the deluxe 48-inch sink model, the regular or portable cabinet models—you're sure to get the finest features money can buy! Load it . . . set it . . . forget it! Dishes come out sparkling clean! Completely automatic! Approved by UL. Let Sears experts install yours now.



Completely New! New Homart

Food Waste Disposer

Chews up food wastes quickly . . . quietly. You can install it yourself in about an hour. Usually—no plumbing changes are needed. Continuous type feed, superior cutting action.

Quality-built, long-lasting HOMART ACCESSORIES for kitchen sinks



A. Wall Mount Faucet. Polished chrome plated solid cast brass with mixing swing spout. Self-draining soap dish. Replaceable seats. 8 in. between centers.

B. Deck type Faucet. Bright chrome plate over heavy brass. All metal handles— $\frac{1}{4}$ turn gives full flow. $7\frac{1}{2}$ -inch spout for extra clearance. Replaceable seats. Fits sinks with openings 6 inches between centers.

C. Deck type Faucet. Polished chrome plated brass, metal lever handles. $7\frac{1}{2}$ -inch mixing swing spout for extra clearance. Replaceable seats.

D. Deck type Faucet with Crystal Flo Aerator on spout that makes non-splash stream. Polished chrome plated brass, metal lever handles. Replaceable seats. Heavy brass $7\frac{1}{2}$ -in. mixing swing spout with built-in stops.

E. F. Basket Strainers. Stainless steel. Top diameter $4\frac{1}{2}$ in. Nut, washers, $1\frac{1}{2}$ x 4 in. tailpiece. Fit $3\frac{1}{2}$ to 4 in. outlets.

G. H. Flat Strainers. Chrome plated brass. Removable strainer plate. Nut, washers, $1\frac{1}{2}$ x 4-in. tailpiece included.

J. Velva-Flo Faucet Aerator makes

non-splash flow . . . more suds, faster rinsing! Red rubber top fits most faucets—no threads on spout needed.

K. Suction Sink Stopper. 5-in. diameter fits flat strainers up to $4\frac{1}{2}$ in. Rubber. State color: green, red, white.

L. Brass Replacement Stem for all types faucets. Stem, seat, washers.

M. Washers. Semi-hard rubber. 12 in. box, assorted sizes.

N. Slip Nuts. $1\frac{1}{4}$ -inch lavatory trap to $1\frac{1}{4}$ -in. waste pipe. $1\frac{1}{4}$ -in. lavatory

Homart Fittings Made to Fit Standard Threads and Sink Center Openings.

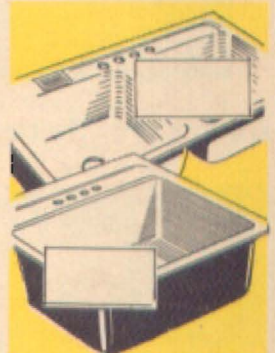
trap to $1\frac{1}{2}$ -in. waste pipe. $1\frac{3}{4}$ -in. waste overflow to $1\frac{1}{2}$ -in. waste pipe. $1\frac{1}{4}$ -in. sink trap or waste overflow to $1\frac{1}{2}$ -in. waste pipe

P. Connecting Waste. Connects outlets of 2-basin sink to only 1 trap needed. $1\frac{1}{2}$ -in. brass tubing, satin finish. Size center to center of outlets.

R. T. Sink Traps. Satin chrome plated $1\frac{1}{2}$ -in. brass tubing.

R. Floor. $26\frac{1}{2}$ in. long.

T. Wall. 12 in. center to end.



Single Basin Steel Flat Rim Sinks

21x20-in.; ledge back; 3" drain; spray opening.

Double Basin Steel Flat Rim Sinks

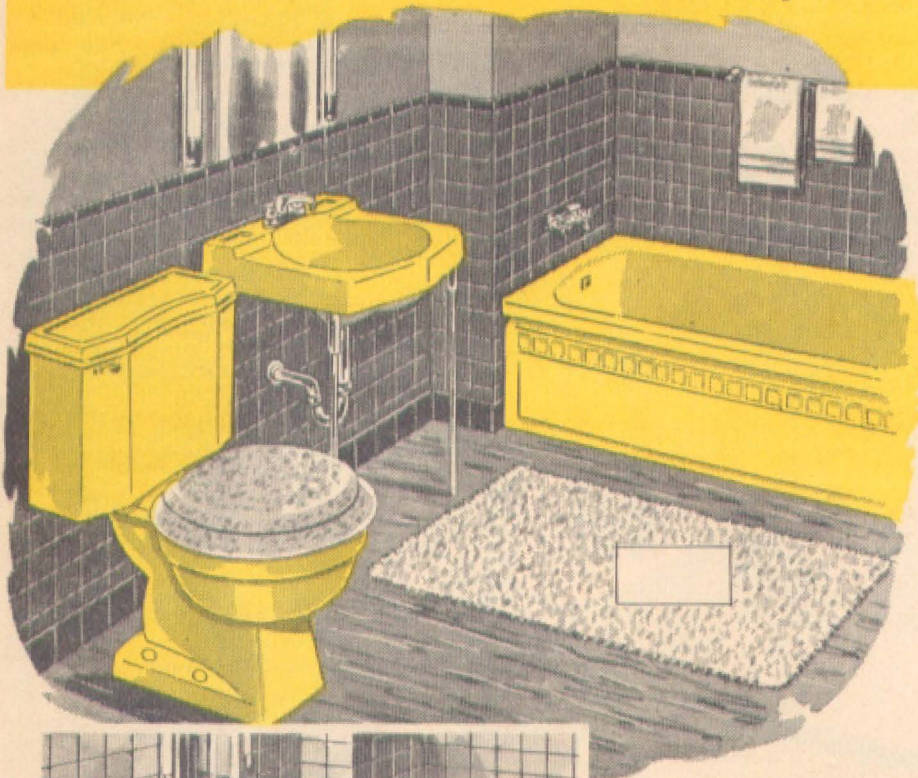
32x20-in.; available with or without trim. Save.

Make YOUR bathroom 'picture book' beautiful . . .

Homart Bath Ensembles

in lovely Harmony House

Colors



Color-Matched STEEL bathtub, Vitreous China Lavatory and Toilet in Yellow, Green, Blue or White. Fittings Included

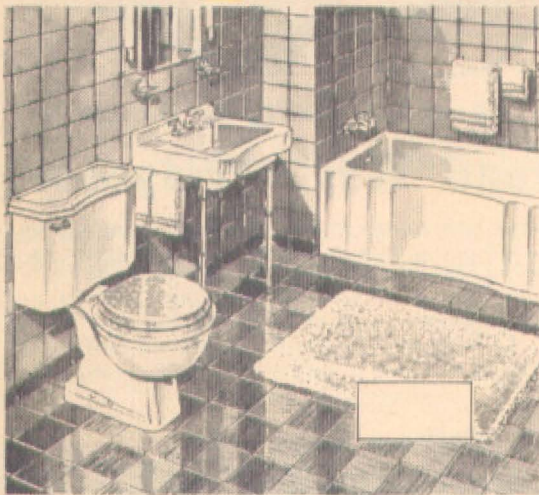
- Exclusive design 5-foot steel bathtub with acid-resisting Titanium vitreous enamel finish; flat bottom; wide shelf.
- Acid-proof, stainproof vitreous china lavatory with low anti-splash back, concealed overflow. Chrome legs.
- Quiet, efficient flush action reverse trap toilet in modern unit-type design. Trapway at back. Matching Pearl design seat.

New, colorful bathroom beauty like this can be yours for only 10% down on Sears Easy Payment Plan. Easy to handle—built for long service. Choice of Horizon Blue, Sunshine Yellow, Mint Green or White. Expert installation service if desired. Investigate now!

Our Finest Cast Iron Bathtub Ensemble in a Choice of 3 Colors or White

• Easy to care for and costs so little

Truly a bathroom you'll be proud to show your friends! Finest quality in every detail—eyecatching loveliness of color in a choice of Mint Green, Spice Biege, Horizon Blue or White. Complete with "best" quality fittings. Financing and installation arranged.



Select Your New Homart Bath Ensemble Today Choose From Three Styles of Quality Fittings



'Thrifty' Style

Includes tub overflow and faucet; lavatory waste and faucet and set of lavatory legs.

'Better' Style

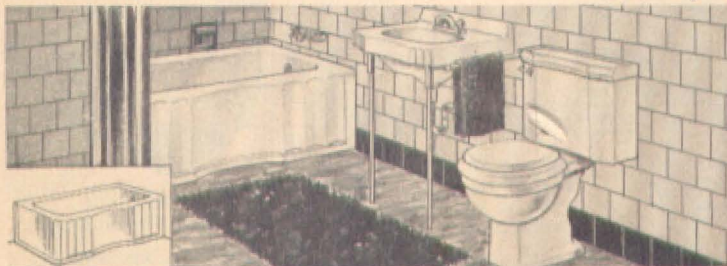
Includes faucet and overflow for tub; shower head; waste, faucet and legs for lavatory.

'Best' Style

Overflow and faucet for tub; pop-up waste, faucet, legs, towel bar for lavatory; shower head.

Come to Sears for the Largest Array of Quality Bath Ensembles in Town!

No Money Down on F.H.A. Plan!

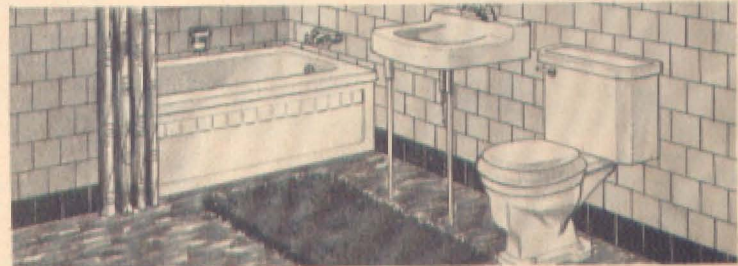


Our 'best seller' in popular white . . .

Homart CAST IRON TUB ENSEMBLE

- 3 Styles of Fittings
- 4½ or 5-ft. Built-in or Corner Tub

Gleaming white vitreous enamel bonded to heavy cast iron body. Exclusive fluted design. Large 22x18-in. lavatory. Reverse trap toilet. Built for long life and utility.



Snowy white . . . complete with fittings!

Thrifty STEEL TUB ENSEMBLES

- Thrift Quality Fittings
- 5-ft. Recess Steel Tub

Tub bottom is flat for extra safety . . . grooved hand rail. Wide shelf, or rim, forms a comfortable seat for foot bathing. Stainproof china lavatory and toilet. Save!

GET SEARS FREE ESTIMATE ON A COMPLETELY INSTALLED BATH ENSEMBLE! CONVENIENT TERMS!



Modernize your bathroom at surprisingly little cost with Quality Toilets and Lavatories



Homart Toilets

of white vitreous china—
complete with white seats

Low Cost Washdown Toilet

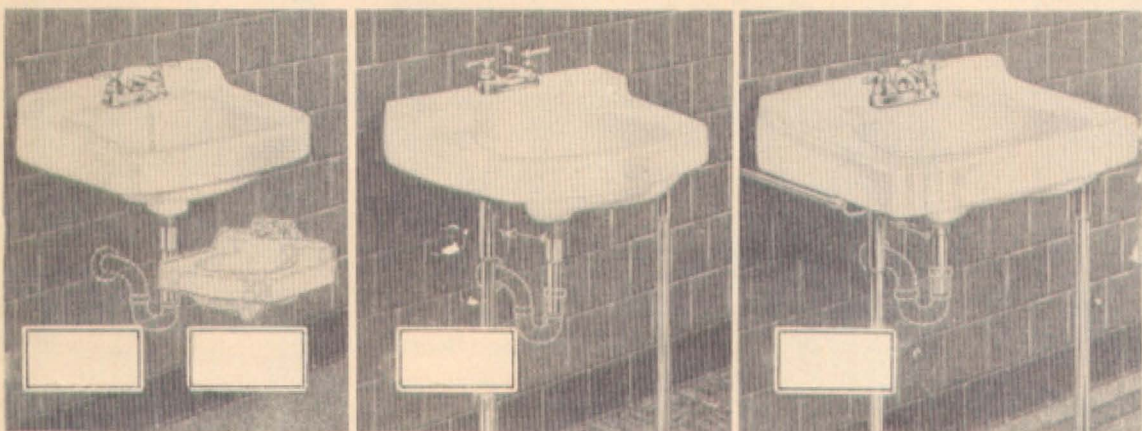
Efficient and attractive unit-type design. With seat and regular ballcock.

Reverse Trap Toilet

Quiet; highly efficient. Modern design, just a little more than our lowest price outfit.

Hush-Quiet Siphon Jet Action Toilet

Our most efficient, streamlined toilet! Complete with seat, regular ballcock



Homart Lavatories

of finest stainproof
vitreous china

19x15-in. Lavatory

Budget priced wall-hung model with low mounted faucet ledge.

19x17-in. Lavatory

Wallmount lavatory with mixing faucet; concealed front overflow.

Leg Style Lavatory

20x18-in. leg style model with handy shelf back.

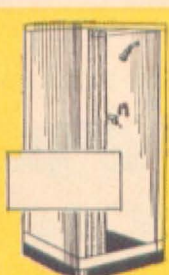
King-size Lavatory

Deluxe 22x18-in. leg style model with low mounted faucet ledge.

Now in Lustrous
Harmony House Colors . . .

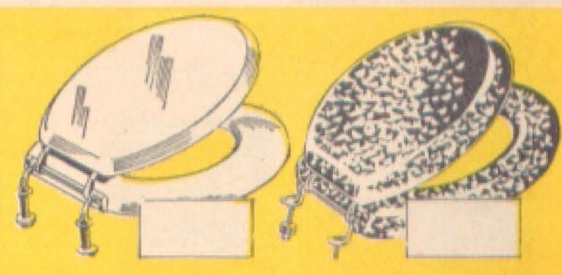
Homart STEEL WALL TILE

Choose Homart tile for walls that stay beautiful and easy to care for! Lightweight 5 and 10-in. squares—easy to handle and cut. Also a complete line of trim and installation accessories.



All Steel Shower

Sturdy, rust-resistant. White enameled. Easily assembled. White curtain.



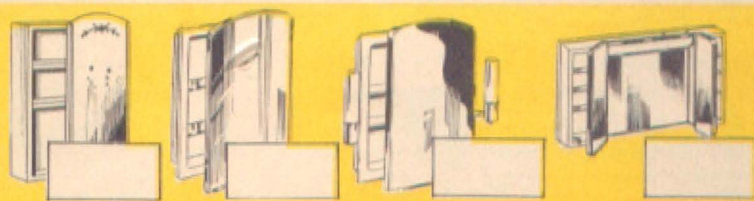
Typical Toilet Seat Values!

Thrift Style

Glossy white finish on 1-inch stack. Won't warp or split. Chrome plated hinge.

Our Best Seat

Homart pearl design pyroxylin for extra gloss, extra wear, extra beauty. Seven colors!



Homart Medicine Cabinets . . . Install 'Em Yourself!

- Wall Type with 11x18-in. mirror
- Light Recess, 18x26-in. mirror
- Recess Type with 16x24-in. mirror
- 4-pc. Matched Vanity Model

Make Sears YOUR Headquarters for Everything in Bathroom Equipment! Buy on Sears Easy Terms!

Glass fused on steel . . . tank will NEVER rust! Last 2 to 10 times longer!

HOMART *Glass-lined* Automatic Water Heaters



- ★ Glass wool insulation
- ★ Glass lined . . . water stays crystal clear
- ★ Baked white enamel finish
- ★ Wide choice of sizes

GAS MODEL . . . in 30, 45 or 65 Gallon Sizes

Concealed draft control. Gas Miser — automatic dial temperature control. Adjustable 90 to 160 degrees. Safety pilot shuts off gas if pilot flame ever goes out. For natural, LP (Bottled) or manufactured gas.

Upright ELECTRIC MODEL in 30, 50, 80 Gallon Sizes

Single or double elements!

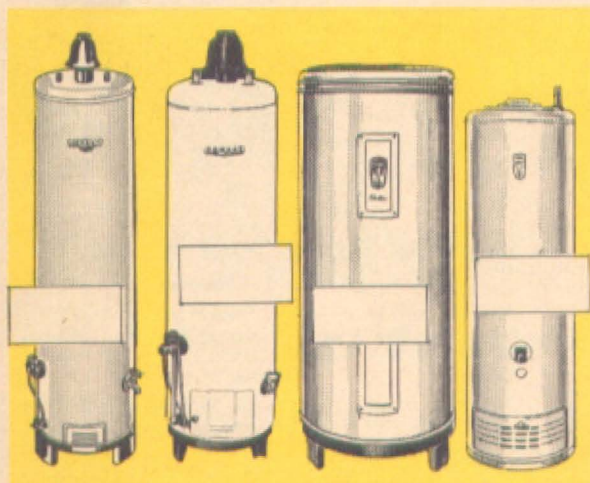
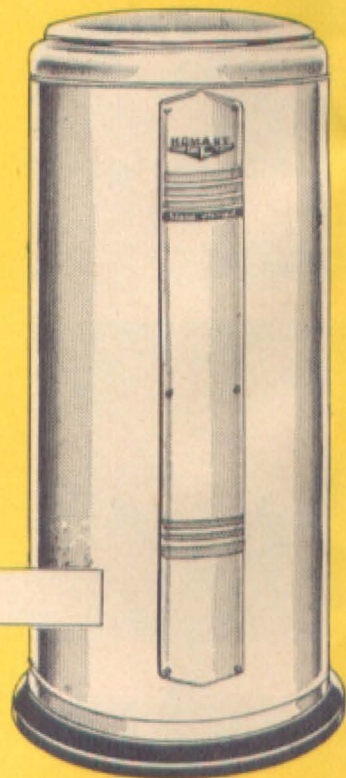
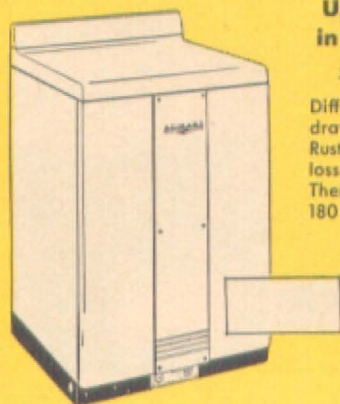
Diffuser allows more hot water to be drawn off at higher temperatures. Rustproof brass heat trap cuts heat loss. Loop type immersion element. Thermostat adjustable from 120 to 180 degrees.

Electric Cabinet Model Water Heater

Roomy top serves as extra space in kitchen! Choice of 30 or 50 gallon capacity. Single or double element on 50 gal. size.

Tank Guaranteed for 10 Years!

You get a new water heater free if the glass-lined tank fails within 5 years after purchase. Failure within the next 5 years entitles you to a new glass-lined water heater at current prices less 1/120th for each month remaining on the original 10 year guarantee.



Budget Priced Homart Gas, Electric or Oil Automatic Water Heaters

Gas Model—Glass Lined Tank Guaranteed 10 Years

Insulated tank. Completely automatic thermostat. 20 or 30 gallon. For all types of gas.

Electric Model, Galvanized Tank Guaranteed 5 Years

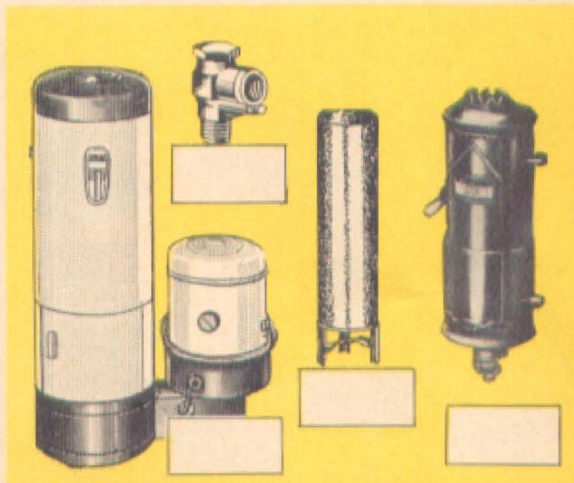
Current-saving twin elements. 3-inch glass wool insulation. 30, 52 or 82 gallon sizes.

Gas Model—Galvanized Tank Guaranteed 5 Years

20, 30 or 40 gallon sizes. Glass wool insulation. For natural, manufactured or LP (bottled) gas.

Oil Burning Model— Guaranteed One Year!

Automatic dial thermostat. Glass wool insulation. 38 GPH through 60 degree rise. 30 gallon.



Replace Faulty and Worn Out Parts . . . Homart Gas and Oil Equipment

Oil Burning Size-Arm Water Heaters

Provides 15 gallons of hot water per hour. Use with 30 or 40 gallon tank.

Pressure and Temperature Relief Valve for Gas

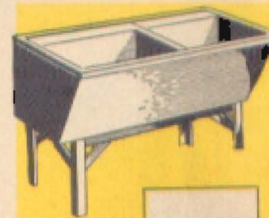
AGA listed. Relieves at 120 lbs. pressure—also at 210 degrees. Adjustable.

Extra Heavy Weight Galvanized Tanks

Electro welded. Zinc galvanized for lasting rust-resistance. Choice of 30 or 40 gallon sizes.

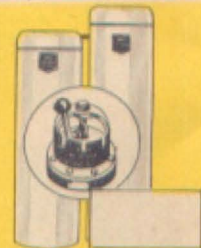
Gas Side Arm Water Heaters

For 30 gallon tanks. Cast iron burner baffle. Approved by A.G.A. Double coil copper tubing.



Homart Laundry Tubs

Leakproof seamless concrete construction. Metal rim prevents chipping. Each section holds about 18 gallons. Stand, faucet priced separately.



Homart Water Softener

Provides rust-free, filter-clean, delightfully soft water. Single valve type. 40,000-60,000-80,000 grain capacities. Streamlined design.

BUY ALL YOUR WATER HEATING EQUIPMENT AT SEARS! EXPERT INSTALLATION! EASY TERMS!

For wells up to 22 feet . . . the gallons-per-hour capacity of these pumps is simply

Amazing!

CONVERTIBLE



SHALLOW WELL JET PUMPS



Homart Shallow Well Piston Pump

Up to 275 gallons per hour . . . from down to 22 feet. 17-gal. galvanized tank. 1/4 H.P. motor. Guaranteed one year.



"Wonderful Water All The Time!"

- Converts quickly from shallow to deep well performance
- Automatic air volume control . . . adds air only when required
- Fully automatic . . . higher output capacities
- Quiet operation . . . cushion mounted

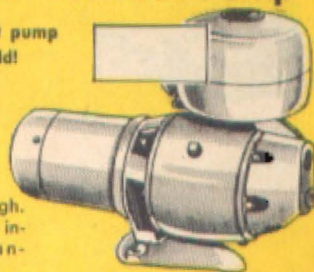
Variable capacity systems with choice of 17-gallon galvanized tank with 1/4 H.P. motor or 30 gallon tank with 1/2 H.P. motor. Can also be installed as deep well unit.

Homart Direct Pressure Shallow Well Jet Pump

Most compact pump we've ever sold!

- 1/4 H.P.
- 530-Gallon per Hour Capacity

Only 16 inches high. Ideal for undersink installation. Guaranteed one year.



Consult Sears Well and Pump Experts on any Problem



Homart Shallow Well Piston Pump

Million gallon 'torture test' proves this model your best buy! 250 or 350 gallon capacities. 1/4 H.P. motor.

Wide range of sizes . . . for wells up to 120 feet!

Big Capacity Homart Deep Well Jet Pumps

Deliver maximum water capacities from deep wells. Balanced impeller, cushioned motor, no lubrication required. Glass lined jet reduces skin friction.

Homart FLEX-O-PIPE

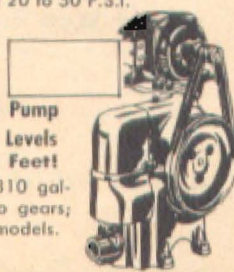
Made of polyethylene plastic! 13 times lighter than ordinary pipe, won't rust, no threads to cut!

Multi-Stage Jet Pump

Completely automatic. 3 impellers. Constant capacities at discharge pressures of 20 to 50 P.S.I.

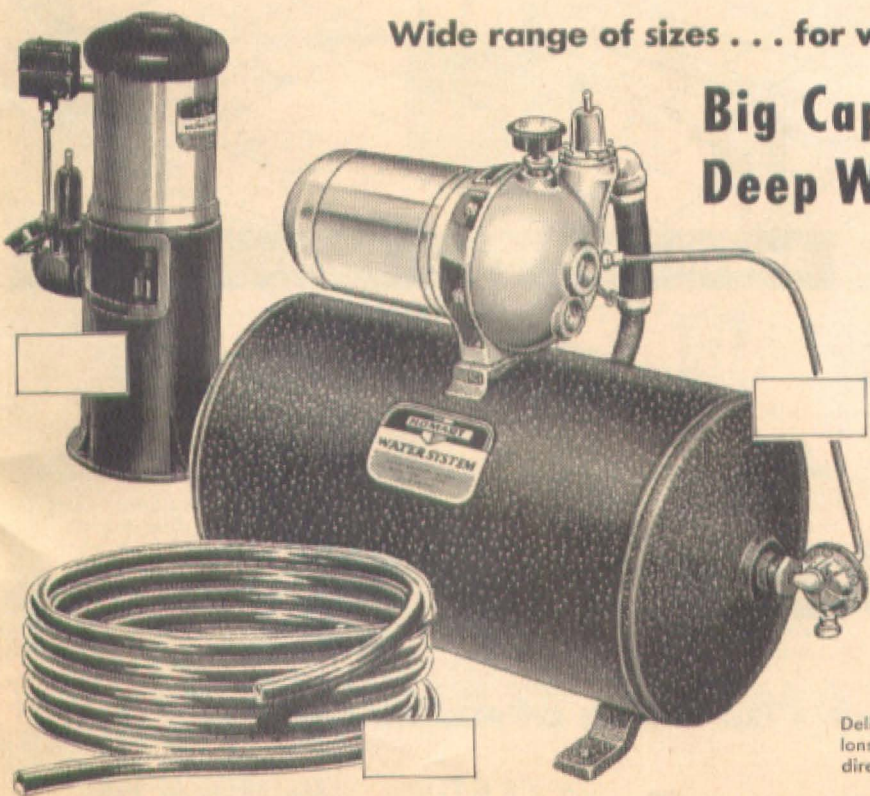
Deep Well Pump For Water Levels Up to 85 Feet!

Delivers 115 to 310 gallons per hour. No gears; direct drive. Two models.



Automatic Electric Cellar Drainer

Protect your basement 24 hours a day! Pumps 3000 gallons per hour at 5-ft. head; 2200 gallons at 10-ft. head. 1/4 H. P. motor. Open type, non-clogging impeller. Easy to install.



WE CARRY A COMPLETE LINE OF SHALLOW AND DEEP WELL HOMART PUMP PARTS AT ALL TIMES!

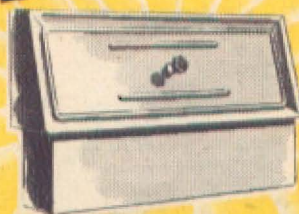
SEARS

ROEBUCK AND CO.

Even - Comfortable Warmth All Through Your Home

"Warmth where you
need it most!"

HOMART PERIMETER HEATING



**Complete Systems
for Gas or Oil Heat**

"Warm-Wall" System, Average 5-Room Home!

AS
LOW
AS

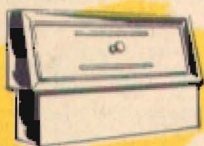
\$13

Per Month
On F.H.A. Plan

Sears Will Arrange Complete Installation, Financing
No Money Down! Take 36 Months to Pay Under FHA Plan!

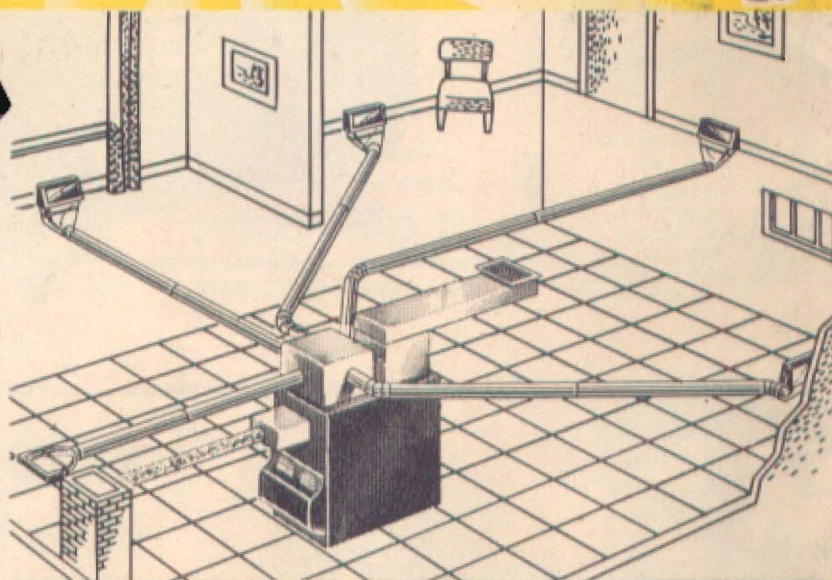
- Includes 5 warm air runs, 5 floor registers, all controls
- Automatic Homart forced air furnace
- Return air run, smoke pipe, plenums and fittings

Warmth where it's needed most! New Homart Perimeter heating system covers cold outside walls with even heat. Easy to install, one man can assemble the easy fitting parts alone! Efficient floor registers allow complete control of air stream . . . no cold drafts, no uncomfortable hot blasts!

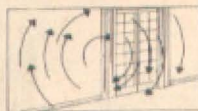


Out-of-Wall Registers

New slot-type registers require no cutting of plaster. They fit easily, compactly into baseboard. Each register "blankets" 16 ft. wall.



Amazing New Homart Perimeter Heating



Heat Blankets Cold Outer Walls

Homart Perimeter Heating warms outer walls so that they actually radiate heat! Operates efficiently, economically. Outlines your home with even warmth.



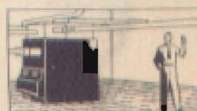
Parts Are Quickly Installed

Rustproof aluminum pipe and fittings are easy to handle, 10-ft. section weighs little over 3-lbs. Just slide pipe into connector. Another 'plus' feature that costs you little!



Eliminates Drafty Floors

Homart Perimeter Heating tends to equalize temperatures between floor and ceiling, requires but one return air pipe in most homes.



Smaller Pipes, More Headroom

Smaller warm air pipes and less return air pipes mean more headroom in basement, more space for that play room you may be longing for.

CALL OR WRITE TODAY FOR A FREE ESTIMATE ON PERIMETER HEATING

"Satisfaction guaranteed or your money back" SEARS

ALL KINDS OF HEAT
FOR ALL KINDS OF HOMES