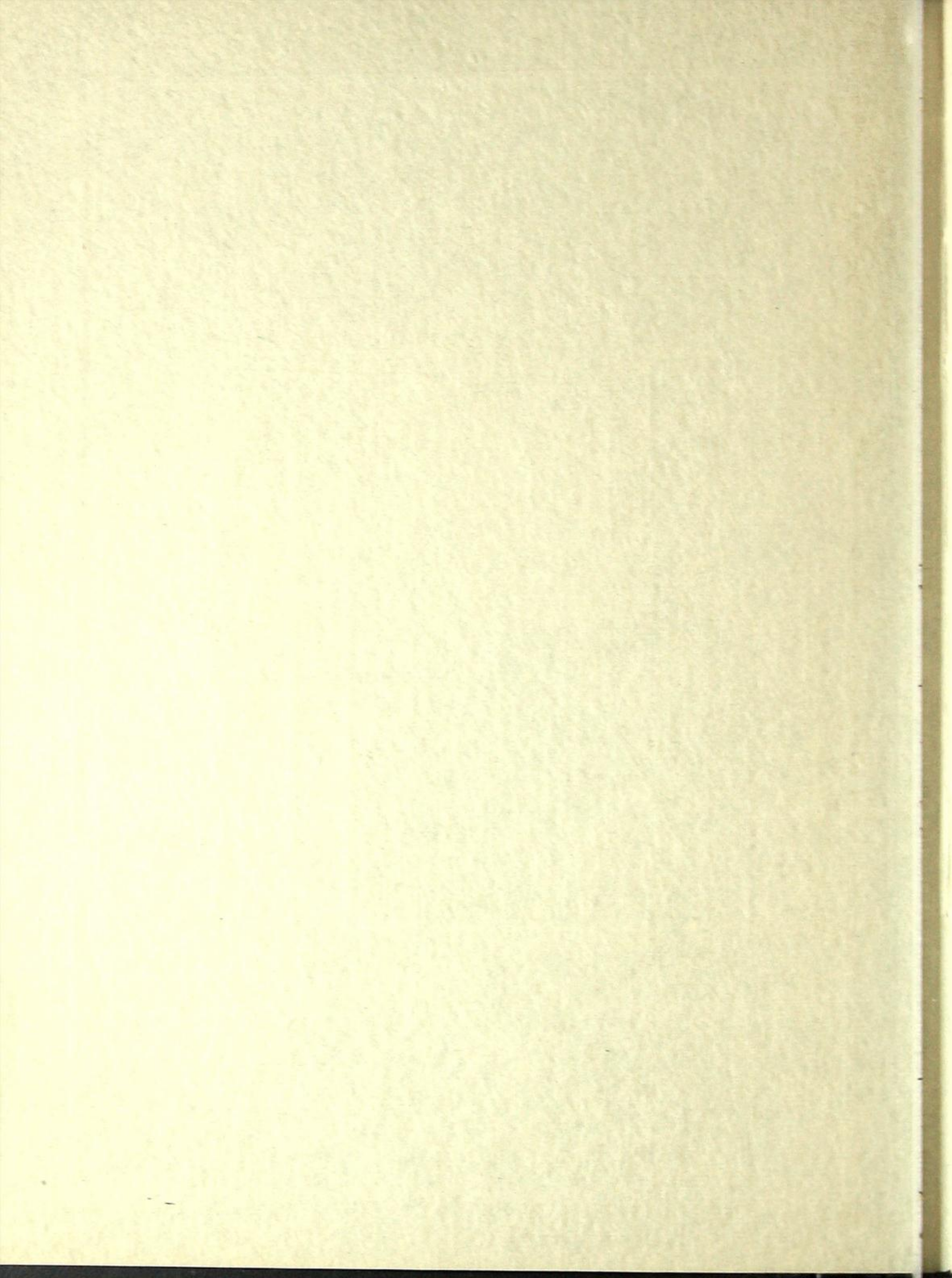


SAFFORD RADIATORS



THE DOMINION
RADIATOR
COMPANY, LIMITED
TORONTO
CANADA

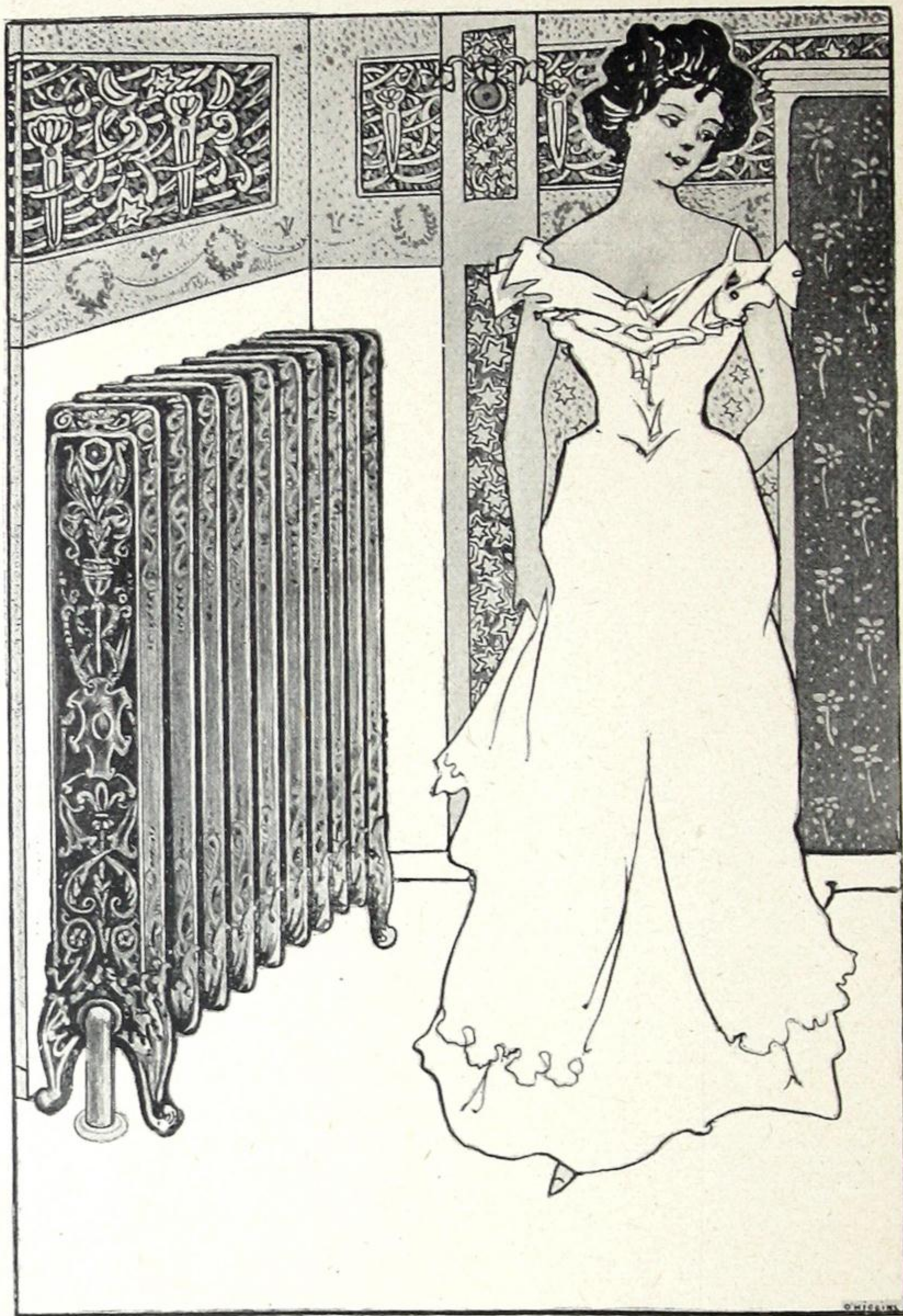


357

EDLL
MLLL

1181CBA

135228



"SAFFORD" IDEAL RADIATOR

Safford Radiators

MANUFACTURED BY

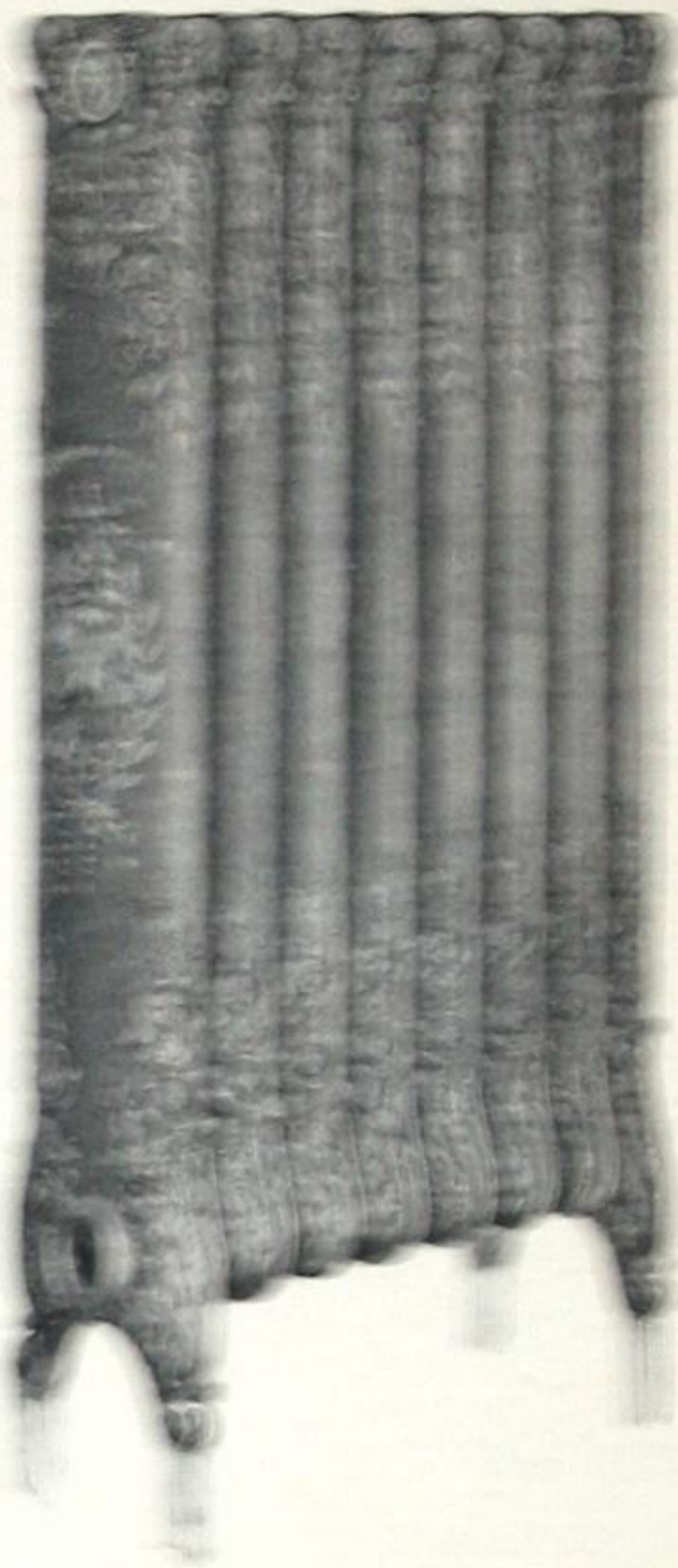
THE
DOMINION RADIATOR COMPANY
LIMITED

TORONTO, - CANADA



*The Largest Radiator Manufacturers
Under the British Flag.*

THE QUEEN OF RADIATORS



SAFFORD "FLORENCE" RADIATOR

A WORD

FOR THOSE WHO
WANT TO KNOW.

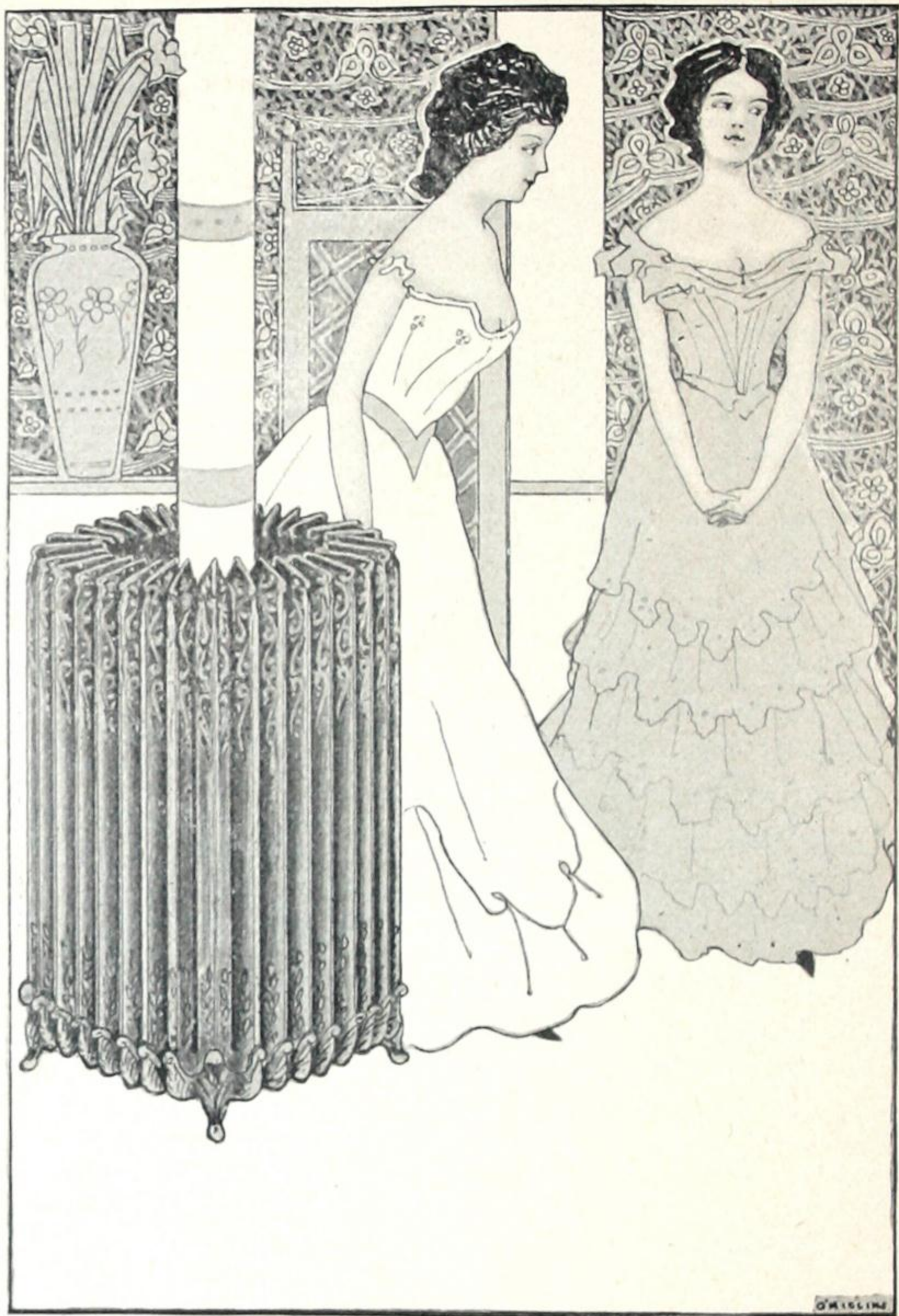
**



HIS is not a Catalogue—nor a Price List—it is something in the way of a letter of introduction. In it we present our credentials setting forth the merits of the “Safford Radiators.”

These Radiators are admittedly the most satisfactory heaters in the world. They are in use in every country under the sun where artificial heating is necessary. They have been installed in many public buildings of importance in the British Empire and Continental Europe. You have seen them very often, but perhaps you have not been introduced to them.

The object of this booklet is to introduce to you the “Safford Radiators.”



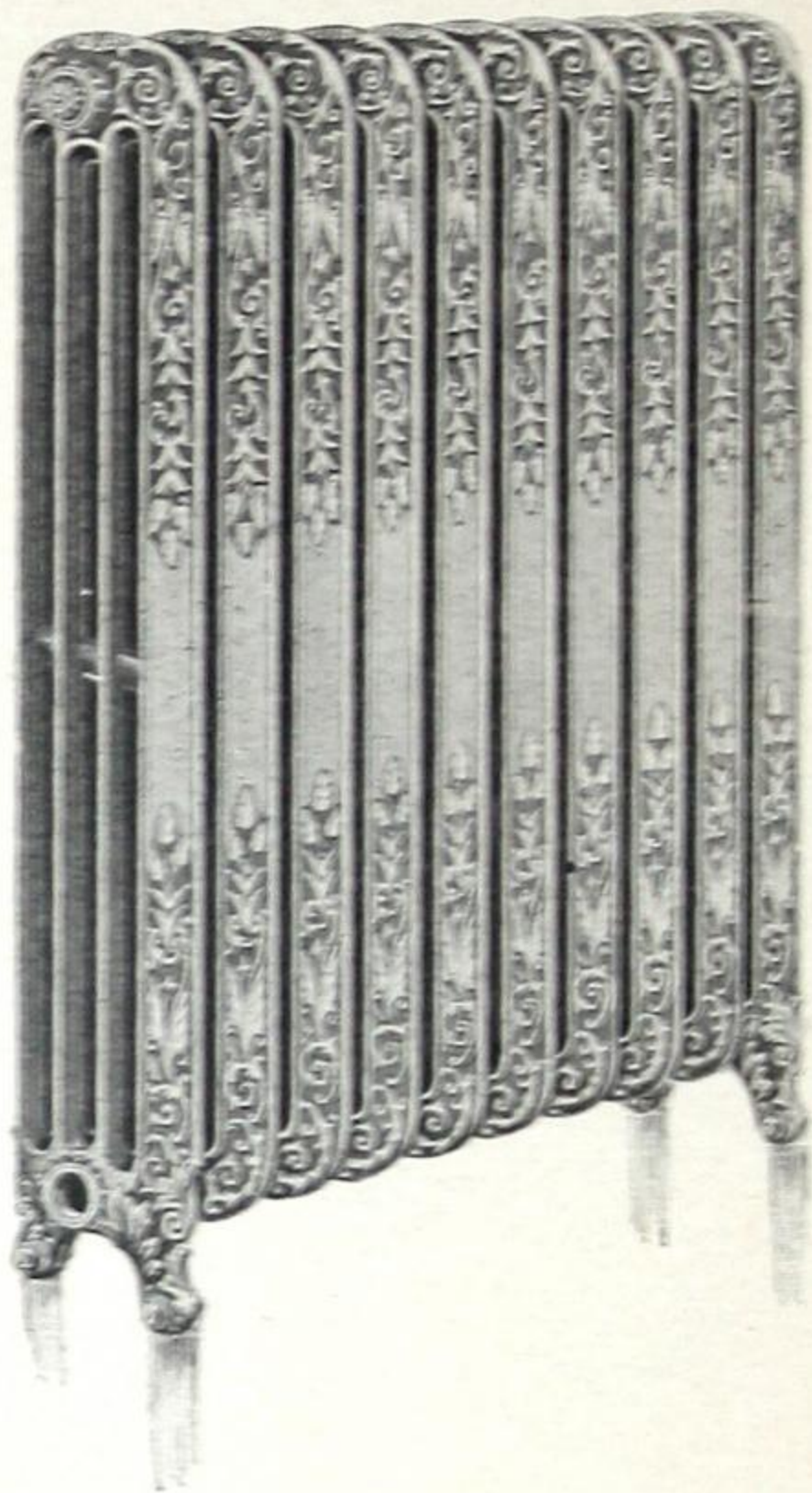
"SAFFORD" COLUMN RADIATOR

In thirteen years a great many people have come to hear of the "Safford Radiator," and thereby we have come to be the largest manufacturers of Radiators under the British Flag. They have been placed in every public building of importance recently erected. They make homes snug, and warm, and comfortable, and the home builder should enquire about them.

It costs him nothing.

It will save him a great deal.

THE
QUEEN
OF
RADIATORS



SAFFORD "FAVORITE" RADIATOR.



CONSTRUCTION

IF YOU ARE BUILDING, OR INTEND to build, a home or public structure of any kind, you must first take into your careful consideration how it should be heated. Hot water and steam are certainly the best, the cheapest, and the most approved methods of heating yet known. Then there is something equally as important to decide upon — the Radiator—and there are many Radiators. Some are poorly constructed of cast iron, and unsightly. They are made and used because of their cheapness.

The Construction of a Radiator is the most essential point to be considered—then its decorative usefulness. In these lines we claim to lead the world.

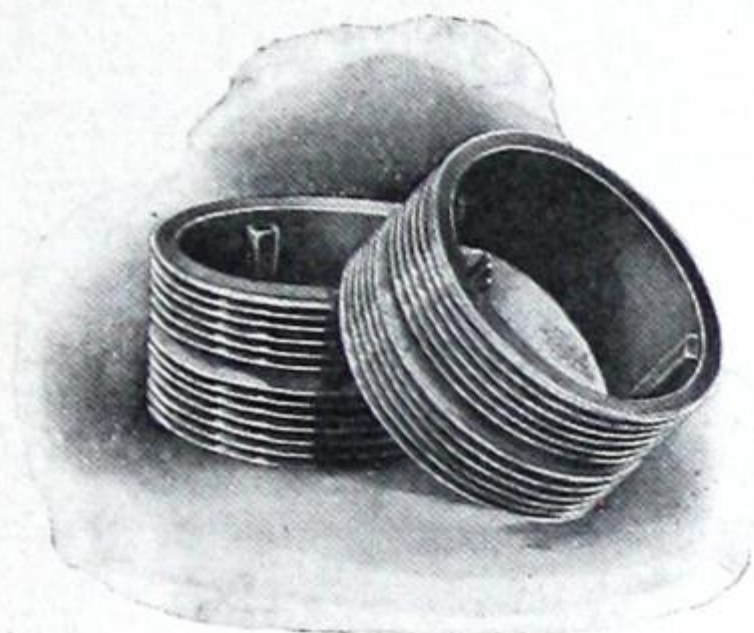
You have no doubt discovered in the course of your experience that the old-time “box coil” was almost perfect in regard to the joints. In the joints of the Radiator lies its merit. The



"SAFFORD" WINDOW RADIATOR

joints we use in our Radiators are exactly the same in principle as the old "box coil," but with modern improvements.

The "Safford Radiator" is connected at the joints with screwed nipples, specially designed and patented for connecting Hot Water and Steam Radiators, and every machine, or tool, used for the construction of the Radiator with screwed joints, is fully protected against the pirate.



We claim to be the only manufacturers in the Dominion of Canada who do not use either red lead, bolts or packing in the making of Radiators.

THE
QUEEN OF
RADIATORS



SAFFORD "IDEAL" RADIATOR

The "Safford Radiator," in short, has no bolts, no packing, and has a screwed pipe connection. It is therefore absolutely non-leakable. Within a minute after the heat is turned on it circulates evenly through the pipes.—There is a free passage, because the openings are large, and because there is simply nothing to retard it. These Radiators are light and durable in construction, and will stand a pressure of 140 pounds to the square inch.



"SAFFORD" F. & W. WALL RADIATOR

DESIGNS

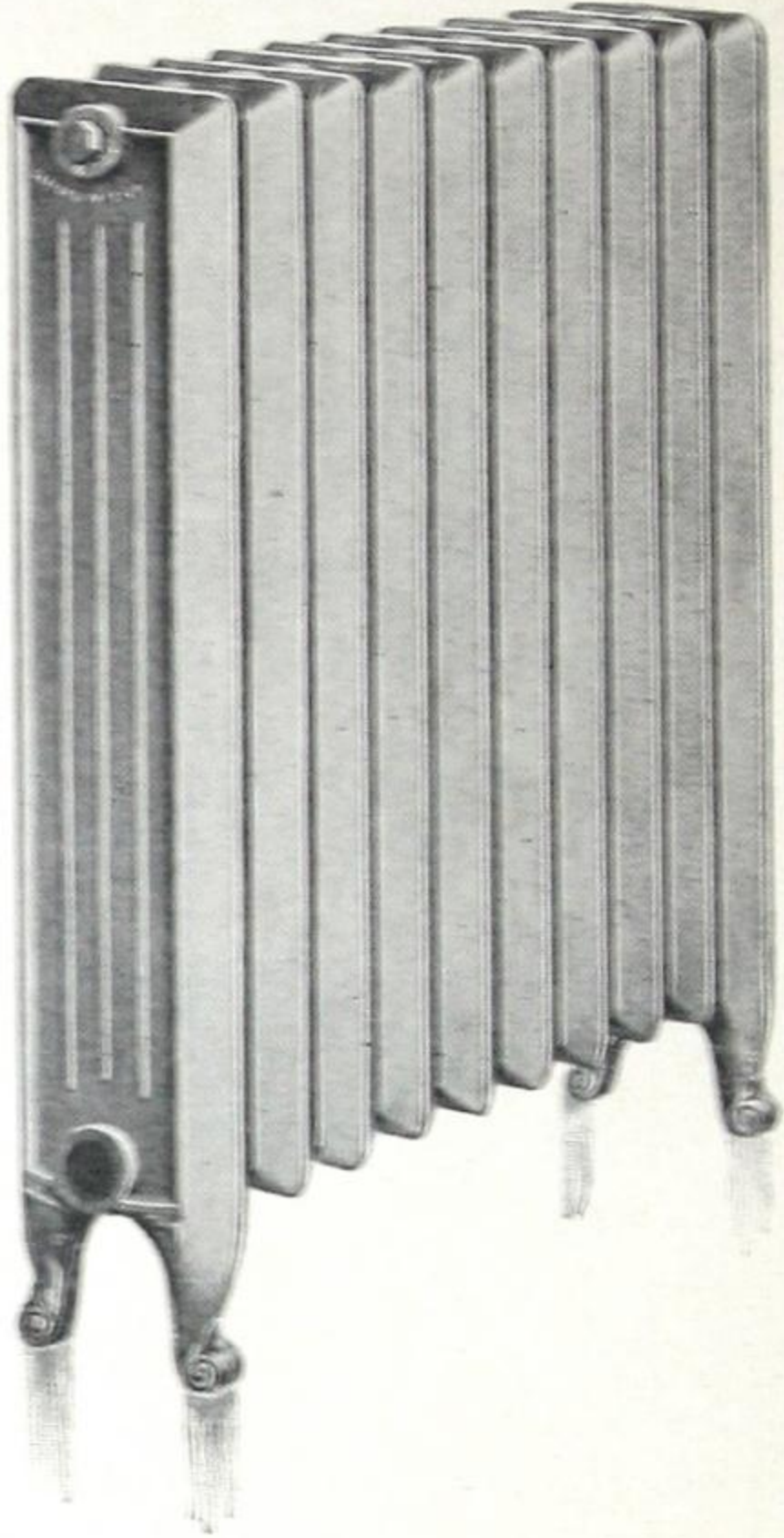
WE BUILD OUR RADIATORS TO SUIT the space, and in various designs, and all heights from thirteen to forty-eight inches.

If a room has a corner where a Radiator would look well, and would be serviceable in heating, we build it to suit that corner. We make them for curves and angles, for bay windows, and to put around columns.

In small rooms where the economy of space is an important consideration, we supply Wall Radiators, which are of narrow width, artistic in manufacture and design. They are fastened to the wall by means of brackets.

For Churches, Schools and Warehouses, where floor room is valuable and always scarce, we make a special Wall Radiator, which is fastened to the wall by means of brackets and arranged for direct or semi-direct heating. Semi-direct are provided with wall boxes, which admit fresh air from the outside, passing it behind the lower pipes and into the room. These

THE
QUEEN OF
RADIATORS

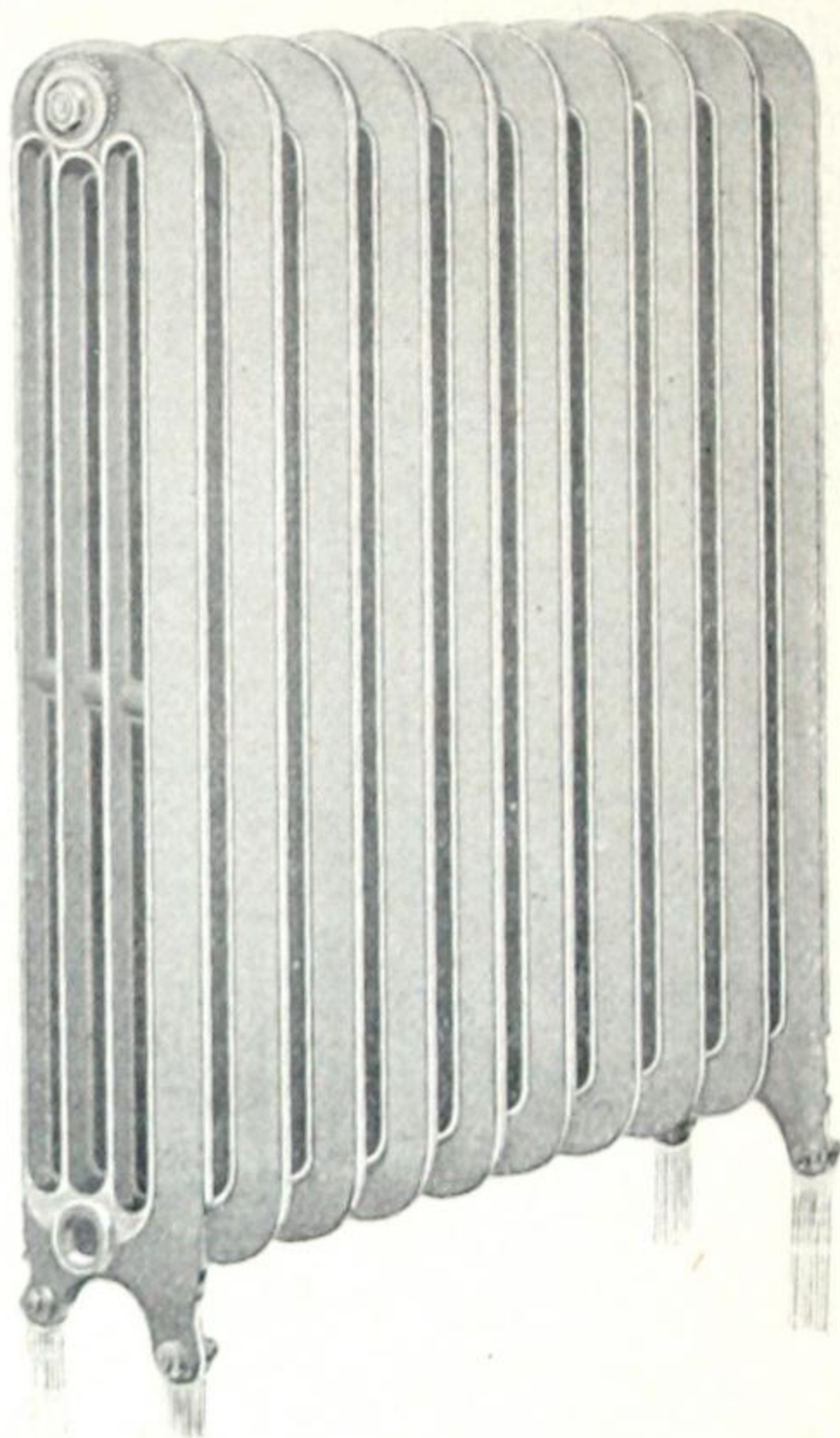


SAFFORD IDEAL PLAIN RADIATOR

wall boxes are equipped with mixing dampers and storm deflecting baffle plates, and also with copper gauze insect screens if desired. The wall boxes are made amply strong to support the weight of the walls, and are securely anchored, forming an effective and handsome support for the Radiator. There is a damper which may be operated by the foot, and regulates the admission of air from without.

These Radiators are especially valuable for use in Churches and Schools, where good ventilation is as essential as good heating.

THE
QUEEN OF
RADIATORS



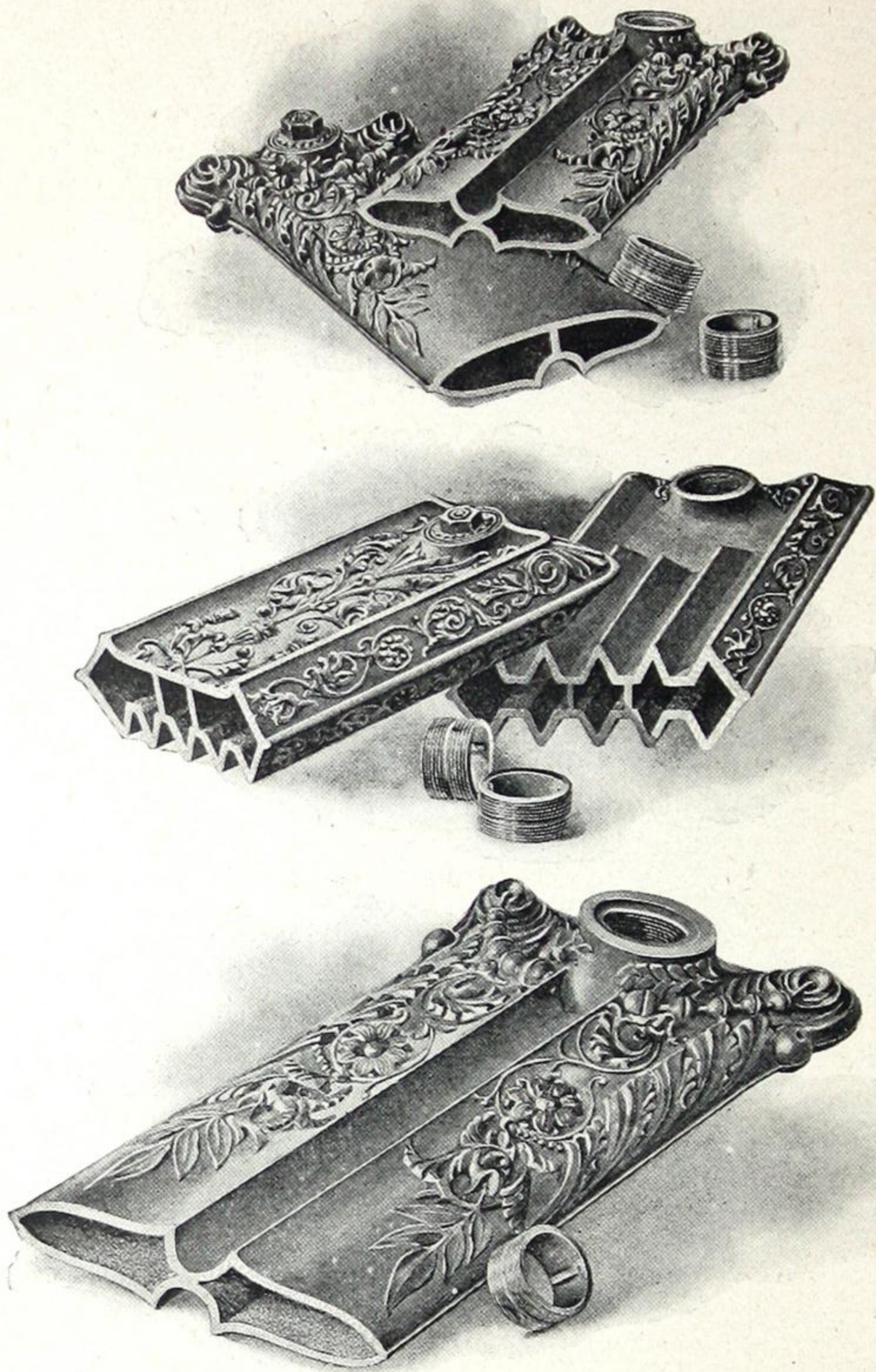
SAFFORD FAVORITE PLAIN RADIATOR

DECORATIVE CONSTRUCTION

BESIDE THE INTERNAL CONSTRUCTION there is something else to be considered before selecting a Radiator — its decorative construction.

Often a drawing room, beautifully furnished and decorated, is spoiled by an unsightly Radiator. Often the effect of highly artistic walls and Mosaic floors in public buildings and office structures, is marred by the presence of a common looking heater. And this is not a question of cost, but of taste, for it costs no more to get a handsome Radiator than it does to get one of ugly construction and inartistic decoration.

Our object always has been to have our mechanical efforts go hand-in-hand with art. We have been eminently successful so far in this regard. The old-time heater, from being an ungraceful hindrance to the beauty of home




CROSS-SECTIONAL VIEWS OF 'SAFFORD' RADIATORS

decoration, has evolved itself into the modern Safford Radiator, lending charm and finish to its surroundings.


When absolutely plain Radiators are required the "Safford" will be found so well defined in outline that the most critical could not but say that they will be of decorative usefulness, being constructed and built in the highest standard of excellence.

HOW TO GET A HEATING PLANT.

HEN YOUR MIND HAS BEEN MADE up to install a modern up-to-date heating plant, you should then consult your architect, and if you have no architect go straight to a first-class plumber or heating engineer—get his opinion as to what you will require, and give him ample time to make an estimate. See that he incorporates in his estimate full particulars as to size of the boiler to be used, square feet of radiating surface, and the number of

Radiators to be placed in each room ; ask him to state definitely what style of Radiator and Boiler he will install. You can then decide definitely with your contractor as to actual results to be expected, as much depends upon the style of building to be heated.

A LAST WORD

E SELL OUR RADIATORS ONLY through the trade, or contractors for installing heating apparatus. We shall, however, give any information to the general public that they may desire, to enable them to secure a first-class system.

We make the largest and most complete variety of heating apparatus of any Company in Canada. We are the inventors and originators of Sectional Cast Iron Radiators in this country, and to keep abreast of the times employ only the most skilled mechanical experts, who are thoroughly alive to the requirements of the trade.

We issue large descriptive Catalogues, which we will furnish to any bona fide intending purchaser.

In conclusion, we are in business to stay, and if you selected the "Safford" Radiator you may depend upon it that they are backed up by a powerful and thoroughly reliable Company.

**THE DOMINION RADIATOR
COMPANY, Limited**

JOHN M. TAYLOR
Managing Director.

TORONTO

Montreal, Quebec, St. John, Winnipeg and Vancouver.
London (Eng.), Glasgow, Edinburgh, Antwerp, Berlin,
Christiana, Johannesburg (S.A.R.), Mexico, Auckland, N.Z.

