

Gurney
**COPLEY
RADIATOR**

GENERAL INFORMATION

COPLEY Radiators are tapped $1\frac{1}{2}$ inches R.H. top and bottom both ends (except twin connection Hot Water) and bushed to size required. Add $\frac{1}{2}$ inch to length for each bushing. Twin connection Hot Water Radiators are tapped L.H. solid for twin end, $3\frac{1}{4}$ -inch centres, and have the remaining three tapings $1\frac{1}{2}$ inches R.H. Maximum size of any tapping $1\frac{1}{2}$ inches.

All Copley Radiators are connected both top and bottom by heavy malleable iron screw nipples.

Copley Radiators having curves or angles built into them are supplied only with opposite end or top and bottom same end tapings.

In ordering Copley Radiators, specify whether vent tapping is required or not, and if wanted, whether for steam or water. Vent tapings are $\frac{1}{8}$ inch R.H.

THE GURNEY FOUNDRY COMPANY
LIMITED

TORONTO AND MONTREAL

WINNIPEG

VANCOUVER

1920's

415-

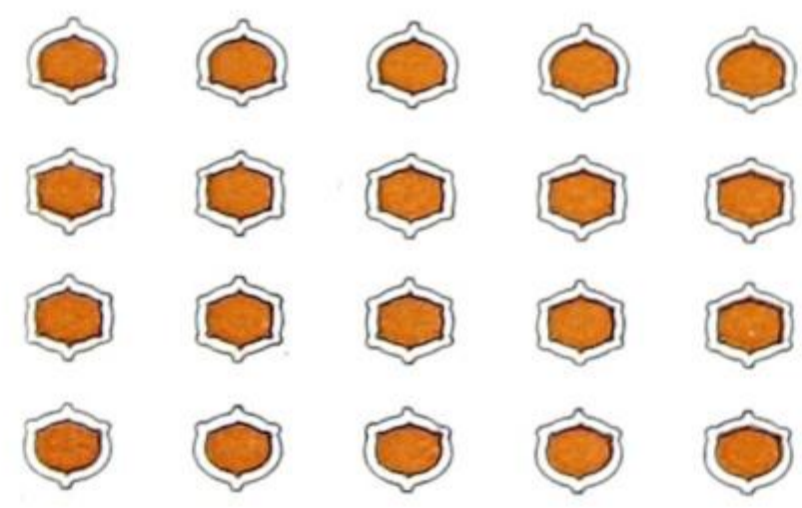
THE COPLEY

A Radiator — Beautiful as a Piece of Fine Furniture

THE New Copley Radiator takes its place appropriately as a tasteful decoration in any room. Its pleasing design and proportions, with its efficiency in heating, are the outstanding features of this New Gurney Radiator.

The graceful lines of the Copley expose to the air a greater heating surface. In heating ability a radiator of this type is unrivalled. The large amount of free air which can circulate around its tubes gives it a wonderful heating efficiency.

The New Gurney Copley Radiators in your home are at once the expression of your sense of beauty, and common sense in securing the utmost efficiency in heating results.



The illustration above is a cross section through the tubes of a 4-tube Gurney Copley Radiator. Note the large amount of free air space around the tubes, allowing rapid air circulation.



Copley Three Tube Radiators

For Steam and Water

SIZES AND RATINGS

Heating Surface—Feet

Number of Sections	Length 2½ In Per Sec.	38 In. Height 3½ Ft. Per Sec.	32 In. Height 3 Ft. Per Sec.	26 In. Height 2½ Ft. Per Sec.
2	5	7	6	4⅔
3	7½	10½	9	7
4	10	14	12	9⅓
5	12½	17½	15	11⅔
6	15	21	18	14
7	17½	24½	21	16⅓
8	20	28	24	18⅔
9	22½	31½	27	21
10	25	35	30	23⅓
11	27½	38½	33	25⅔
12	30	42	36	28
13	32½	45½	39	30⅓
14	35	49	42	32⅔
15	37½	52½	45	35
16	40	56	48	37⅓
17	42½	59½	51	39⅔
18	45	63	54	42
19	47½	66½	57	44⅓
20	50	70	60	46⅔

Width 5" (Copley 3 Tube Hot Water Radiators with Twin Connection are 5¾" wide over tapping bosses) Floor to centre of tapping 4½". Measurements for length are over tapping bosses.

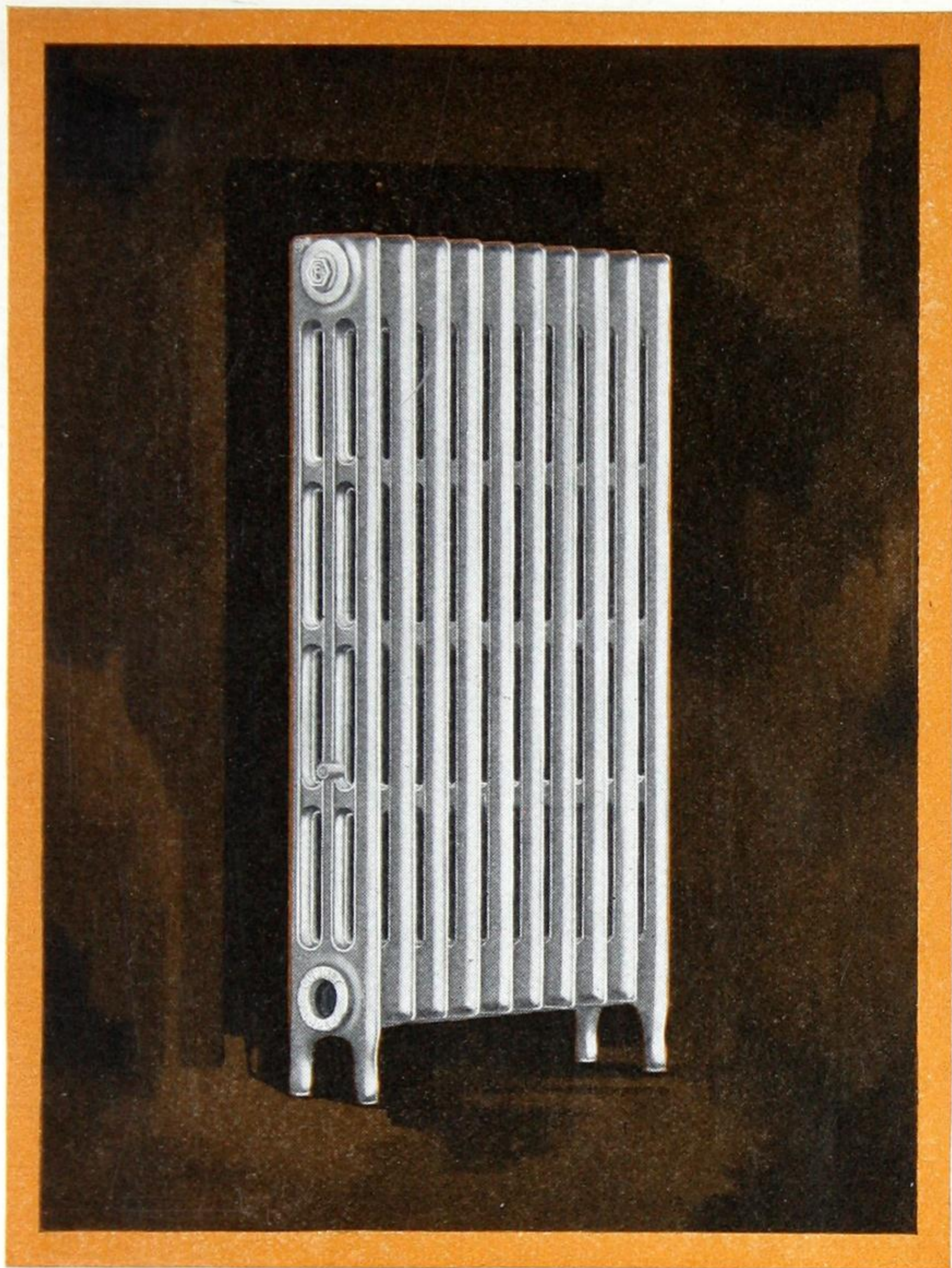
They are furnished legless, or with 6" legs (6" from floor to centre of tapping) when ordered.

Distance between upper and lower tappings

38"	32"	26"
31½"	25¾"	19¾"

See inside of front cover for tapping information.





Illustrating 38" Height

GURNEY THREE TUBE COPLEY RADIATOR

This slender Copley Radiator fitting close to the wall, harmoniously blends into its surroundings.



Copley Four Tube Radiators

For Steam and Water

SIZES AND RATINGS

Heating Surface—Feet

Number of Sections	Length 2½ In. Per Sec.	38 In. Height 4¼ Ft. Per Sec.	32 In. Height 3½ Ft. Per Sec.	26 In. Height 2¾ Ft. Per Sec.	23 In. Height 2½ Ft. Per Sec.	20 In. Height 2¼ Ft. Per Sec.
2	5	8½	7	5½	5	4½
3	7½	12¾	10½	8¼	7½	6¾
4	10	17	14	11	10	9
5	12½	21¼	17½	13¾	12½	11¼
6	15	25½	21	16½	15	13½
7	17½	29¾	24½	19¼	17½	15¾
8	20	34	28	22	20	18
9	22½	38¼	31½	24¾	22½	20¼
10	25	42½	35	27½	25	22½
11	27½	46¾	38½	30¼	27½	24¾
12	30	51	42	33	30	27
13	32½	55¼	45½	35¾	32½	29¼
14	35	59½	49	38½	35	31½
15	37½	63¾	52½	41¼	37½	33¾
16	40	68	56	44	40	36
17	42½	72¼	59½	46¾	42½	38¼
18	45	76½	63	49½	45	40½
19	47½	80¾	66½	52¼	47½	42¾
20	50	85	70	55	50	45

Width 6⅞". Floor to Centre Bottom Tapping 4½". Measurements for length are over tapping bosses.

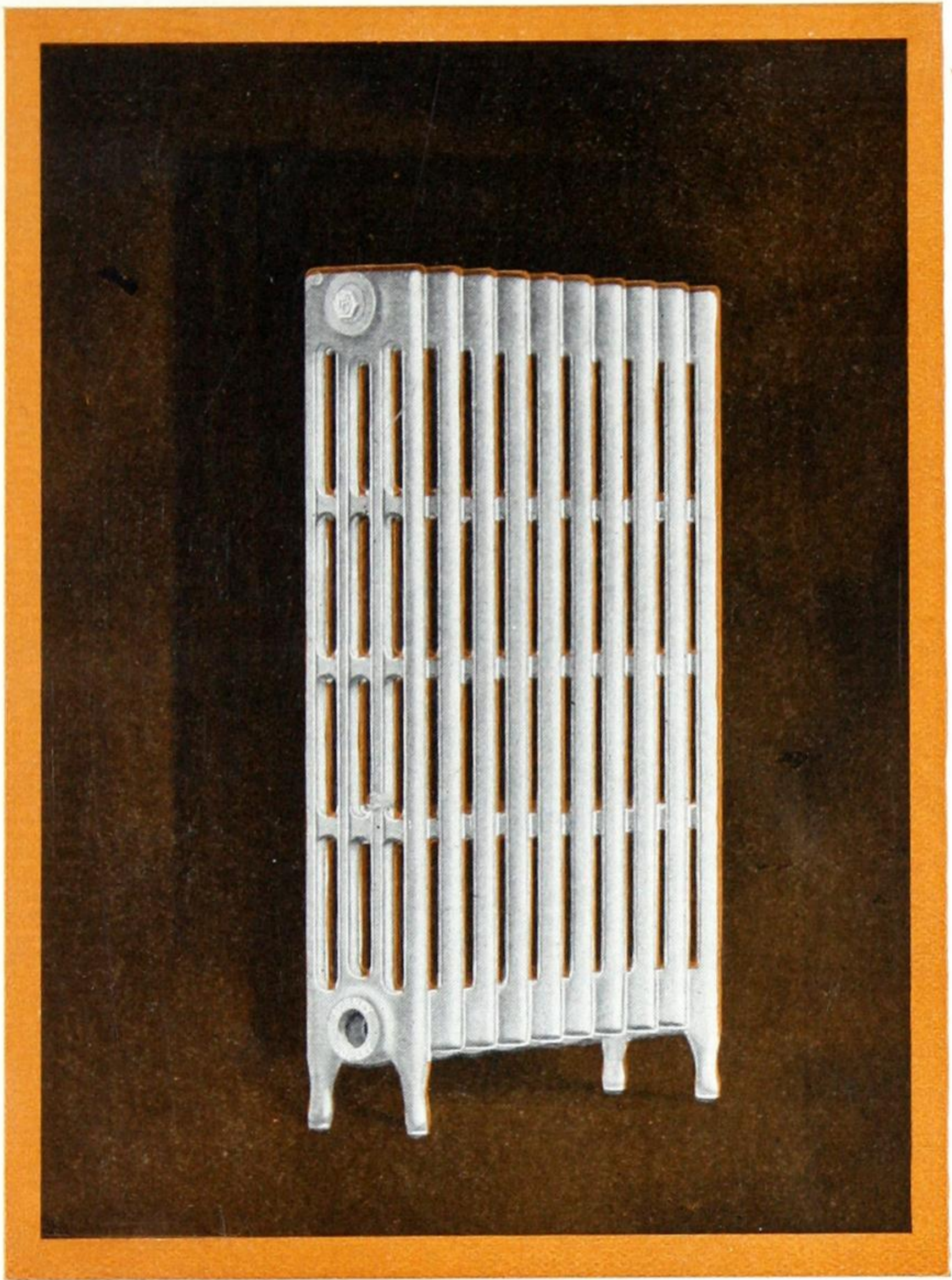
They are furnished legless, or with 6" legs (6" from floor to centre of tapping) when ordered.

Distance between upper and lower tappings

38"	32"	26"	23"	20"
31½"	25¾"	19¾"	16¾"	13¾"

See inside of Front Cover for Tapping Information.





Illustrating 38" Height

GURNEY FOUR TUBE COPLEY RADIATOR

Its graceful lines will please those who appreciate home decoration. Appropriate, but unobtrusive, in any room. The Copley adds to the harmony of decoration—no matter how fine.



Copley Five Tube Radiators

For Steam and Water

SIZES AND RATINGS

Heating Surface—Feet

Number of Sections	Length 2 1/2 In. Per Sec.	38 In. Height 5 Ft. Per Sec.	32 In. Height 4 1/3 Ft. Per Sec.	26 In. Height 3 1/2 Ft. Per Sec.	20 In. Height 2 2/3 Ft. Per Sec.
2	5	10	8 2/3	7	5 1/3
3	7 1/2	15	13	10 1/2	8
4	10	20	17 1/3	14	10 2/3
5	12 1/2	25	21 2/3	17 1/2	13 1/3
6	15	30	26	21	16
7	17 1/2	35	30 1/3	24 1/2	18 2/3
8	20	40	34 2/3	28	21 1/3
9	22 1/2	45	39	31 1/2	24
10	25	50	43 1/3	35	26 2/3
11	27 1/2	55	47 2/3	38 1/2	29 1/3
12	30	60	52	42	32
13	32 1/2	65	56 1/3	45 1/2	34 2/3
14	35	70	60 2/3	49	37 1/3
15	37 1/2	75	65	52 1/2	40
16	40	80	69 1/3	56	42 2/3
17	42 1/2	85	73 2/3	59 1/2	45 1/3
18	45	90	78	63	48
19	47 1/2	95	82 1/3	66 1/2	50 2/3
20	50	100	86 2/3	70	53 1/3

Width 8 3/4". Floor to Centre Bottom Tapping 4 1/2". Measurements for length are over tapping bosses.

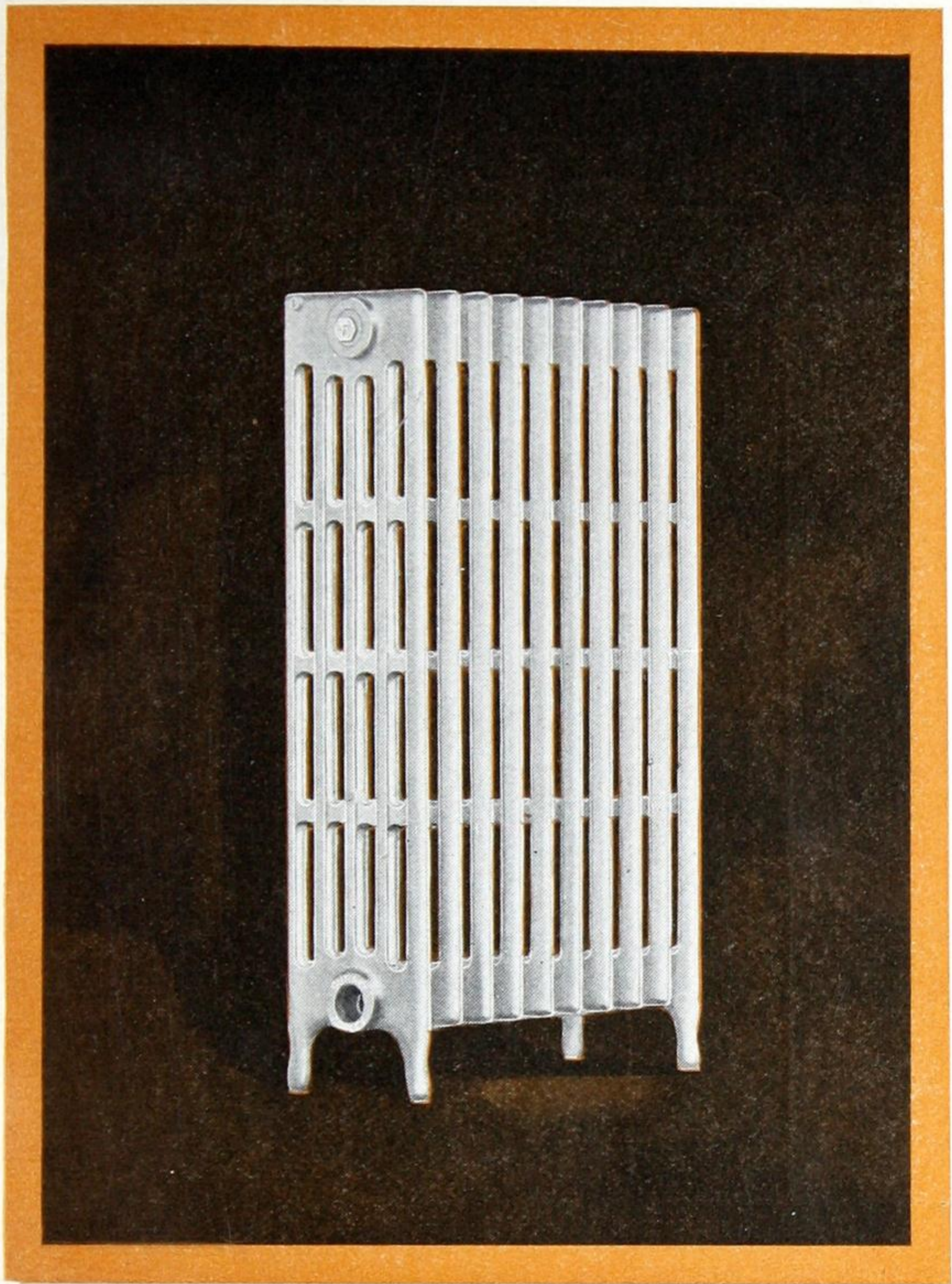
They are furnished legless, or with 6" legs (6" from floor to centre of tapping) when ordered.

Distance between upper and lower tappings

38"	32"	26"	20"
31 1/2"	25 3/4"	19 3/4"	13 3/4"

See inside of Front Cover for Tapping Information.





Illustrating 38" Height

GURNEY FIVE TUBE COPLEY RADIATOR

The slender tubes of the five tube Copley Radiator gives it an airiness which takes away any impression of clumsiness in a radiator of this size.

Its harmony with any scheme of decoration makes it a fit radiator for the finest home.



Copley Six Tube Radiators

For Steam and Water

SIZES AND RATINGS

Heating Surface—Feet

Number of Sections	Length 2½ In. Per Sec.	38 In. Height 6 Ft. Per Sec.	32 In. Height 5 Ft. Per Sec.	26 In. Height 4 Ft. Per Sec.	20 In. Height 3 Ft. Per Sec.
2	5	12	10	8	6
3	7½	18	15	12	9
4	10	24	20	16	12
5	12½	30	25	20	15
6	15	36	30	24	18
7	17½	42	35	28	21
8	20	48	40	32	24
9	22½	54	45	36	27
10	25	60	50	40	30
11	27½	66	55	44	33
12	30	72	60	48	36
13	32½	78	65	52	39
14	35	84	70	56	42
15	37½	90	75	60	45
16	40	96	80	64	48
17	42½	102	85	68	51
18	45	108	90	72	54
19	47½	114	95	76	57
20	50	120	100	80	60

Width 10⁵/₈". Floor to centre of tappings 4¹/₂". Measurements for length are over tapping bosses.

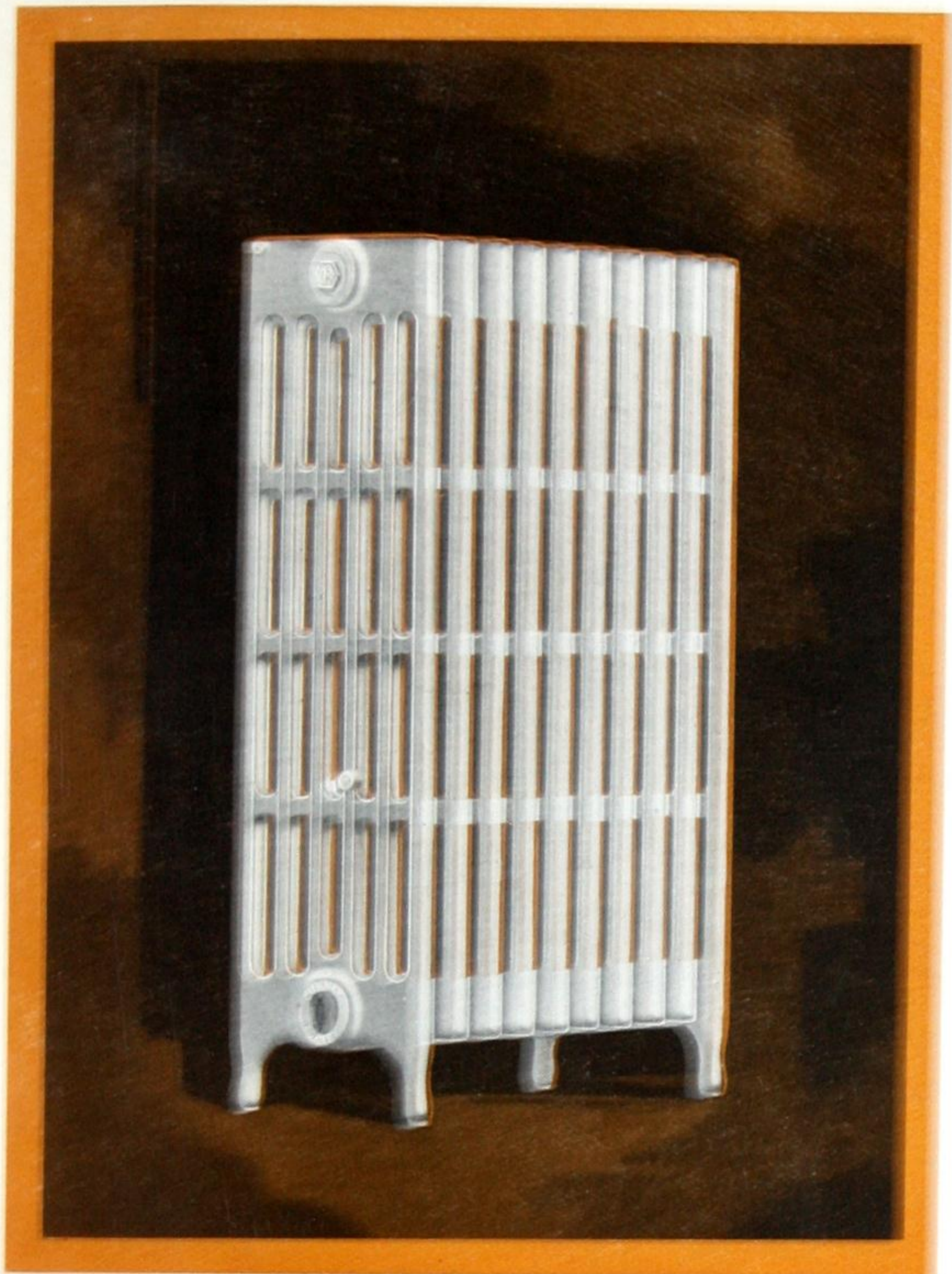
They are furnished legless, or with 6" legs (6" from floor to centre of tapping) when ordered.

Distance between upper and lower tappings

38"	32"	26"	20"
31½"	25¾"	19¾"	13¾"

See inside of Front Cover for Tapping Information.





Illustrating 38" Height

GURNEY SIX TUBE COPLEY RADIATOR

The graceful proportions of the smaller Copley Radiators are maintained in this larger size.

It is an ideal radiator where space is limited in length and where the width is not important.



Gurney Copley Legless Radiators

LEGLESS radiators are being used extensively in homes and public buildings. Copley Radiators supplied in this style, as illustrated on the facing page, are ideal for this purpose.

The benefits of legless radiators briefly are:— convenience, greater sanitation, reduced cleaning costs in public buildings, better appearance and more floor space.

Placing the Copley Radiator securely on the wall by means of suitable brackets, an unobstructed floor space is left under the radiator permitting a brush, mop or other cleaning device to be used under the radiator without stooping or bending.

All Gurney Copley Radiators illustrated in the catalogue can be supplied in legless style. The same footage tables apply to legless as to standard type of radiation.

See our "Valves, Fittings and Accessories" Catalogue for suitable hangers for legless radiators.



²
For Buckets — 300 for each
grad.



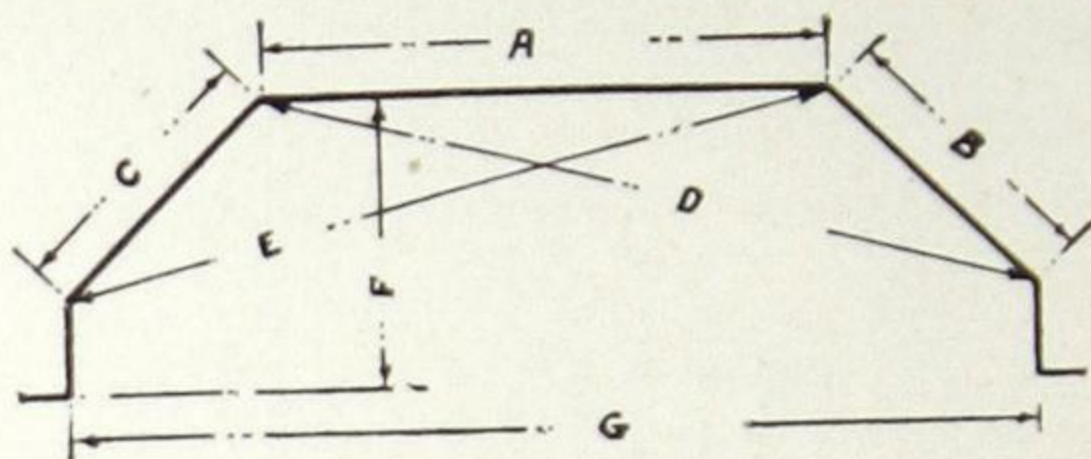
*Illustrating a Gurney Copley Legless Radiator
Four Tube, 38" Height*

GURNEY COPLEY LEGLESS RADIATORS

Gurney Copley Legless Radiators lend themselves to harmonious decorative treatment.



HOW TO ORDER ANGLE RADIATORS



The above diagram shows the measurements necessary to ensure a perfect angle radiator. In ordering be careful to give exact measurement for each dimension indicated by the letters A, B, C, D, E, F, G.

It is preferable that you furnish an exact template, but where it is not convenient a diagram as above will be required.

Be sure the diagram or template (whichever method is used) takes into account the base board and shoe against which the radiator is to be placed.

Please indicate how the tappings are to be made, their size and where located.

For curved radiators a template of wood should be furnished.

For corner radiators send an exact diagram or template and state how many sections are to be on each arm, and how each arm is to be tapped.

Angle, Corner and Curved Radiators are tapped single connection opposite ends.



DIRECTIONS FOR ORDERING

GENERAL

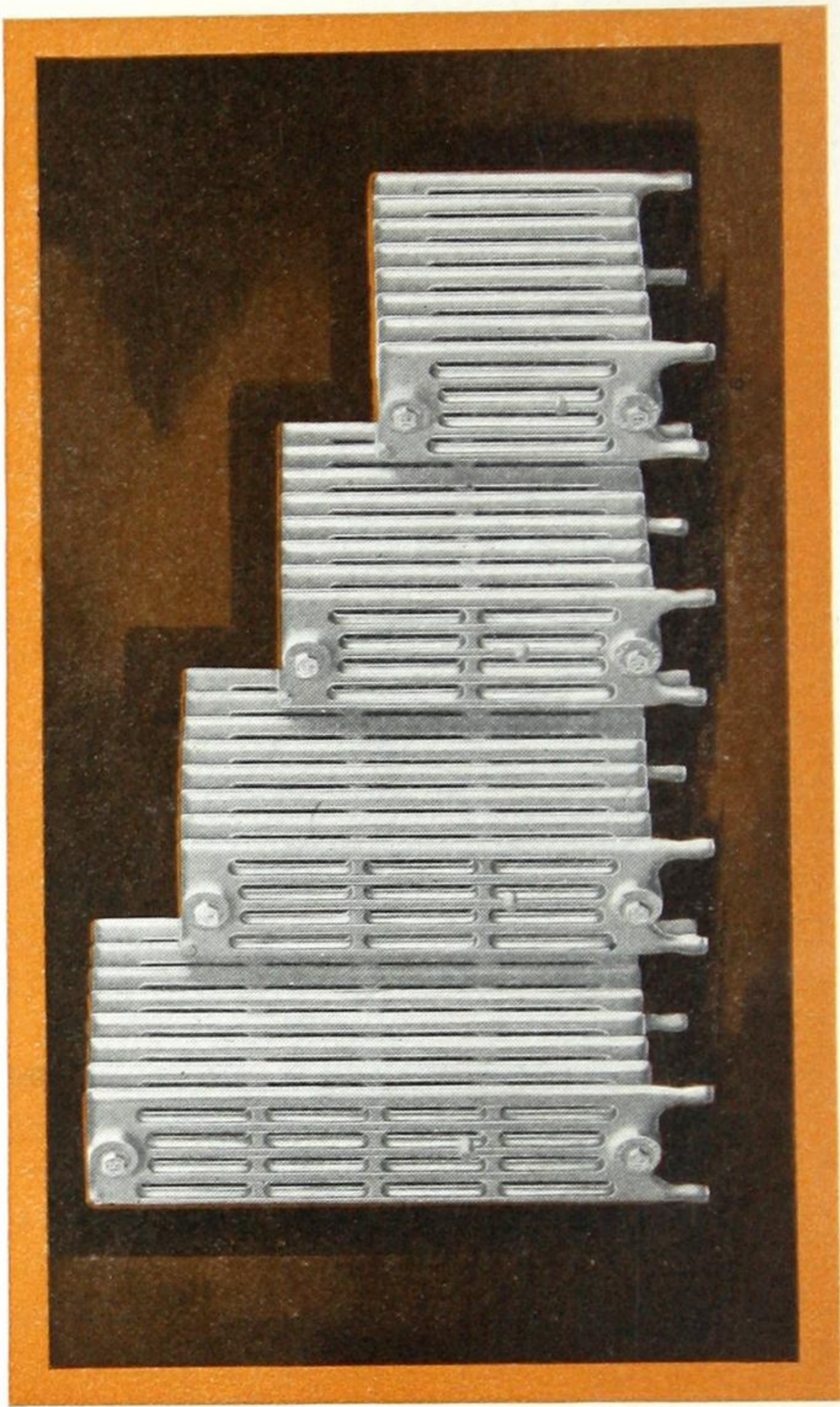
1. It is desirable to specify name of job.
2. State when wanted, and give exact routing for shipment.
3. In any correspondence referring to orders, please give date and order number shown on our "acknowledgment of order", and your own order number if possible.

DETAILS

1. State whether 3, 4, 5 or 6 Tube Copley.
2. Give number of sections in each radiator.
3. State height of radiator.
4. State whether to be used with steam or hot water.
5. If for hot water, state whether twin or opposite end connections.
6. If for steam, state kind of piping system with which they are to be used.
7. Specify exact tappings required and whether R.H. or L.H. thread. (See first page of this booklet and pages 22, 23 and 24 of our "Heating Data" booklet for full information.)
8. When ordering curved or angle radiators, please note information required as shown on page 12.
9. For long radiators, state how they are to be divided for convenience in handling, and in order to avoid straining or breaking in transit.
10. It is general to designate a radiator thus:—
1 — 4 x 10 x 38 Copley H.W. Twin 1" L.H.

This means one Copley radiator, four tube, 10 sections long, 38 inches high, tapped 1" twin with left hand threads.





Illustrating the Four Heights of Five Tube Copley Radiators
See inside of front cover for General Information.